

# Letter to His Majesty

1<sup>st</sup> July, 2013

His Majesty  
King Tupou VI  
Palace Office  
Nuku'alofa  
**TONGA**

**Your Majesty,**

Pursuant to section 51 of the Constitution of Tonga it requires that the Minister for Police shall provide your Majesty with report of the affairs of the Ministry of Police, Prisons & Fire Services during the past year.

This document known as the Annual Report for the Tonga Fire Services covers the operations of the Fire Service in detail.

I have the honour to present to Your Majesty the Annual Report of the Tonga Fire Services for the year ending 2012.

.....  
Honourable. Siosifa Tu'utafaiva  
**Minister for Police, Prisons & Fire Services**

# Letter to Minister

1<sup>st</sup> July 2013

Honourable, Siosifa Tu'utafaiva  
Minister for Police, Prisons & Fire Services

**Dear Honourable Minister,**

I have pleasure in submitting to you the Annual Report of the Tonga Fire Services. The report highlights the Services performance in achieving its objectives and strategies during the period of 1<sup>st</sup> January until 31<sup>st</sup> December 2012.

With respect,

Lofia-'I-Vailahi Heimuli  
**Fire Commissioner**

# Table of Contents

	Pages
Letter to His Majesty	1
Letter to Minister	2
Fire Station Locations	4
Corporate Statements	5
Organisational Structure	6
Administration	8
Operational Activities	14
Community Safety Activities	19
Problems Affecting the Services	22
Budget Estimates	23
Conclusion	27
Appendix	28

# Fire Station Locations

## *Tongatapu Island*

- 1. Fire Service Headquarter (Central Fire Station)**  
Police Training School  
Po Box 827, Longolongo  
Nuku'alofa  
Ph (Control Room): (676) 23-144 / (676) 881 9012  
Ph (Emergency): 999  
Fax: (676) 28-738  
Email: [fireservice@kallianet.to](mailto:fireservice@kallianet.to)
- 2. Lapaha Fire Station (Eastern District)**  
Lapaha, Tongatapu  
Ph (Control Room): (676) 31-222 / (676) 881 9014  
Ph (Emergency): 927  
Fax: (676) 31-222
- 3. Nukunuku Fire Station (Western District)**  
Nukunuku, Tongatapu  
Ph (Control Room): (676) 41-222 / (676) 881 9015  
Ph (Emergency): 928  
Fax: (676) 41-222

## *Vava'u Island*

- 1. Neiafu Fire Station**  
Neiafu, Vava'u  
Ph (Control Room): (676) 70-680 / (676) 867 0699  
Ph (Emergency): 999  
Fax: (676) 70-680

## *Ha'apai Island*

- 1. Pangai Fire Station**  
Pangai, Ha'apai  
Ph (Control Room): (676) 60-771 / (676) 866 0771  
Ph (Emergency): 999  
Fax: (676) 60-680

## *'Eua Island*

- 1. Angahä Fire Station**  
Angahä, 'Eua  
Ph (Control Room): (676) 50-561 / (676) 865 0561  
Ph (Emergency): 999 or 50-313  
Fax: (676) 50-561

# Corporate Statements

## OUR VISION

### ***“A Safer and Happy Society”***

Our vision is for a safer and happy society. We will contribute to this by working with society to reduce death, injury, damage to property and the environment, which result from fire and other emergencies. We will use our relationship with the public to contribute towards increasing harmony in the communities we serve.

## OUR MISSION

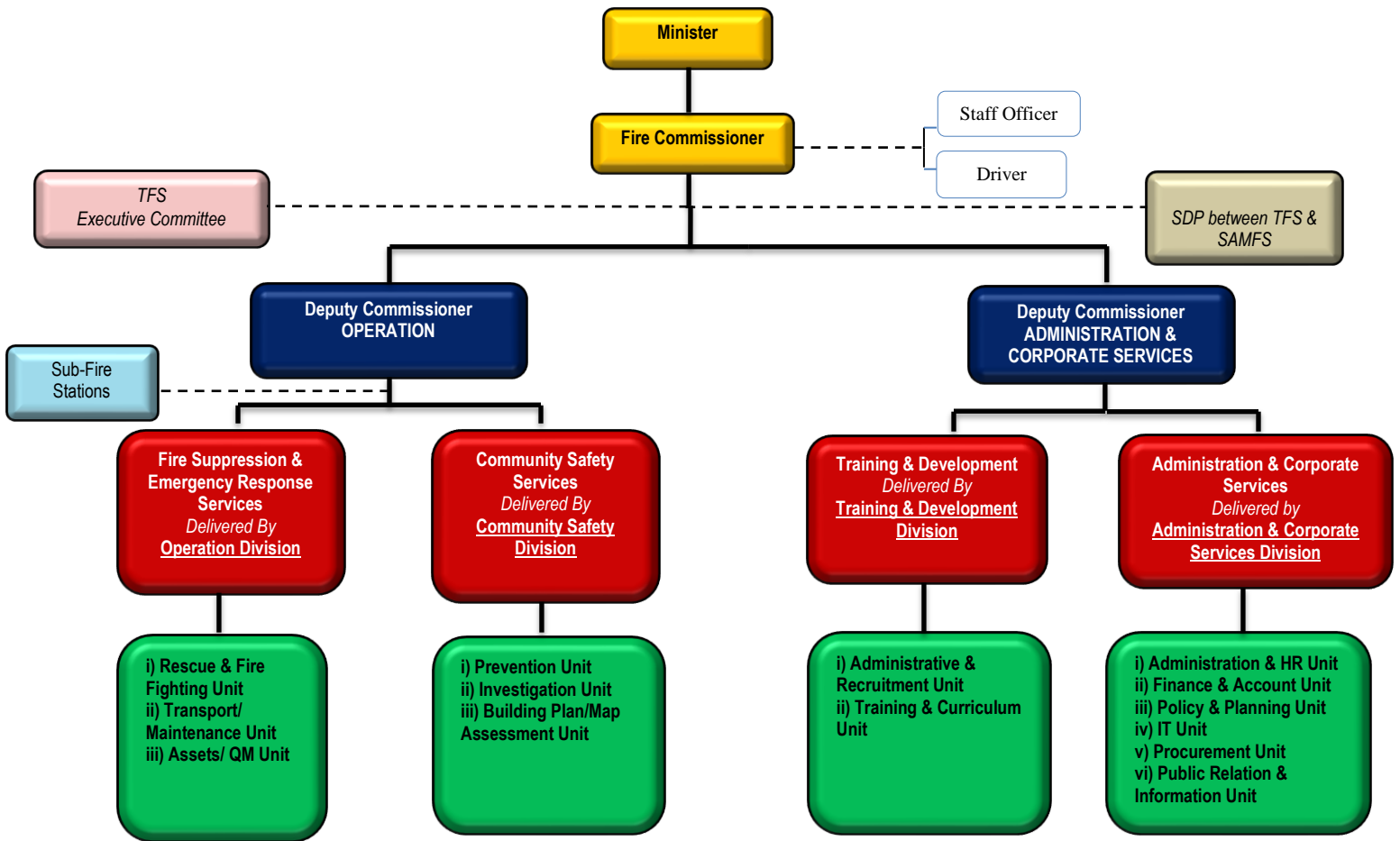
### ***“To Serve the Community”***

We will achieve our vision by providing a modern Fire Service which works with local communities, businesses and other agencies to reduce risks from fires and other emergencies. We will respond speedily and effectively to deal with fires and other emergencies and, if necessary, take calculated risks to save life, protect property, render other humanitarian services and protect the environment, when the community needs us.

## CORPORATE OBJECTIVES

- To prevent fires and promote and coordinate fire safety
- To suppress and extinguish fires
- To render assistance when life and property are at risk from dangers other than fire
- To provide cost effective fire services
- To improve resource management
- To plan the development of Fire Services in Tonga
- To be a good employer
- To ensure that the income objectives are achieved

# Organisational Structure



The TFS organization structure is based on the type of function performed, classification of personnel employed in each division and the overlapping geographic factors. On 29<sup>th</sup> June 2012 Cabinet approved (CD No.580) the revised rank and salary structure for Tonga Fire Services.

Ranks	Major Responsibilities
Minister for Police, Prisons, Fire Services	Overall Command
Fire Commissioner	Responsible for the general efficiency of the Fire Service
Deputy Fire Commissioner	Responsible for the general efficiency of the operational and administrative duties
Fire Commander	Commanding Officers of Divisions
Assistant Fire Commander	Officer In-Charge of Stations and Units
Fire Officer	Second Officer In-Charge of Divisions and Units
Senior, Principal, Leading, Fire Fighter and Recruit Fire Fighter	Perform divisions, stations and units daily routine duties



*Official Launching of TFS New Uniform (13<sup>th</sup> December 2012) by the Hon. Prime Minister & Acting Minister for Police, Prisons & Fire Services – Lord Tu’ivakanō*



*Minister for Police, Prisons & Fire Services (Hon. Siosifa Tu’utafaiva) with TFS Staff*

# Administration

## Administration

**Honourable Lisiate 'Aloveitā 'Akolo** was the Minister of Police, Prisons & Fire Services at the start of the year 2012. In May 2012, the Government reshuffled some Ministerial Portfolios. As a result, **Honourable Sunia Fili** was elected as the new Minister of Police, Prisons and Fire Services.

However, during the same year, the Government again re-shuffled Ministerial portfolios. The Ministry of Police, Prisons and Fire Services was temporarily assigned to the guidance of **Prime Minister of Tonga, Lord Tu'ivakanö** for the remainder of the year 2012.

Fire Commissioner. L. Heimuli, second in command administered the service and was responsible for its general efficiency and daily operation throughout the year.

## Staff & Strength as of 31<sup>st</sup> December 2012

S/No.	RANKS	Nuku'alofa	Vava'u	Ha'apai	'Eua	Lapaha	Nukunuku	STRENGTH
1	Fire Commissioner	1	-	-	-	-	-	1
2	Deputy Fire Commissioner	2	-	-	-	-	-	2
3	Fire Commander	4	-	-	-	-	-	4
4	Assistant Fire Commander	2	2	1	1	1	1	8
5	Fire Officer	6	1	1	-	-	1	9
6	Senior Fire Fighter	7	1	-	1	2	-	11
7	Principal Fire Fighter	4	2	2	1	-	1	10
8	Leading Fire Fighter	2	1	1	2	4	1	11
9	Fire Fighter	14	2	3	3	3	6	31
10	Recruit Fire Fighter	4	1	-	-	-	1	6
11	Clerk	1	-	-	-	-	-	1
	<b>TOTAL</b>	<b>47</b>	<b>10</b>	<b>8</b>	<b>8</b>	<b>10</b>	<b>11</b>	<b>94</b>

## Fire Appliance & Vehicles

S/No	F/ Trucks & Vehicles	Nuku'alofa	Vava'u	Ha'apai	'Eua	Lapaha	Nukunuku	No. of Trucks & Vehicles
1	Fire-Fighting (Hino)	1	2	1	1	1	1	7
2	Fire-Fighting (Toyota)	-	-	-	1	1	-	2
3	Water Tanker	2	1	2	-	-	1	6
4	Fire-Fighting (International)	1	-	-	-	-	-	1
5	Skyjet	1	-	-	-	-	-	1
6	Daily Van	3	2	1	1	1	1	9
7	Tractor	1	-	-	-	-	-	1
	<b>TOTAL</b>	<b>9</b>	<b>5</b>	<b>4</b>	<b>3</b>	<b>3</b>	<b>3</b>	<b>27</b>



## Promotions

The Cabinet approved (CD No.581, dated 29<sup>th</sup> June 2013) the promotion of the following staffs in accordance with TFS revised ranks and salary structure with effective from 1<sup>st</sup> July 2012.

### To Deputy Fire Commissioner

1. Fire Commander 3. TU'IMALAMAKA Fakakonakai Viliami

### To Fire Commander

1. Assistant Fire Commander 4. FOLAU 'Inoke
2. Assistant Fire Commander 5. 'OLIE. Tongamana
3. Assistant Fire Commander 6. KAUVAKA. Ika Sinamoni
4. Assistant Fire Commander 7. FINEANGANOFU. Filisonu'u

### To Assistant Fire Commander

1. Fire Officer 8. LATU Tu'inukuafe Seliuti
2. Fire Officer 9. MAFI Malakai
3. Fire Officer 10. MA'U Huni Viliami
4. Fire Officer 11. VA'ENUKU Moeakiola Tevita
5. Fire Officer 12. MAFI Samiu
6. Fire Officer 13. 'AHOFONO Fakaului
7. Fire Officer 14. LOLO Lolohea Vili
8. Fire Officer 15. TU'IPULOTU Owen

### To Fire Officer

1. Senior Fire Fighter 16. LAVAKA Finau Sione
2. Senior Fire Fighter 17. VAKA. Haileni
3. Senior Fire Fighter 18. TANGINOVA Viliami
4. Senior Fire Fighter 19. HOPOI Kaliopasi
5. Senior Fire Fighter 20. TU'ITUPOU Paula
6. Senior Fire Fighter 21. VAKA Moheloa Siosaia
7. Senior Fire Fighter 22. IKA Tohi Fe'iloaki
8. Senior Fire Fighter 23. 'ESEI 'Amanaki
9. Senior Fire Fighter 24. NAITOKO Fotu'aika

### To Senior Fire Fighter

1. Principal Fire Fighter 26. VEIKOSO Uesile Sione
2. Principal Fire Fighter 27. POLO Kafohiva Paula
3. Principal Fire Fighter 28. TU'UTAFIIVA Paula
4. Principal Fire Fighter 29. VAIHU Sililo Sinele
5. Principal Fire Fighter 30. FINAU Mauikisikisi Kelekolio
6. Principal Fire Fighter 31. BAKER Tofua Charles Christopher
7. Principal Fire Fighter 32. KALONI Maamaloa Sione
8. Principal Fire Fighter 33. VAITAKI King Winston
9. Principal Fire Fighter 34. LIMONI Talau 'o Laumanu
10. Principal Fire Fighter 35. FAKA'I Lisimoa

### To Principal Fire Fighter

1. Leading Fire Fighter 36. LAMA Lolo
2. Leading Fire Fighter 37. LATU Maloni Fatai Hosea
3. Leading Fire Fighter 38. VEA Lotu-He-Mateaki Sydney
4. Leading Fire Fighter 39. KAVA Lapiuini Sione
5. Leading Fire Fighter 40. TU'ITUPOU Maikolo
6. Leading Fire Fighter 41. PAONGO Mafoa'aeata 'Efolosia Sekope
7. Leading Fire Fighter 42. SIKALU Lotu-He-Mavae

8. Leading Fire Fighter 43. FAKATOKA Tiara Tony Mo'ui-'oe-Nasili Timote
9. Leading Fire Fighter 44. TEUMOHENGA Tavake 'Okani Taniela
10. Leading Fire Fighter 45. TAUPAKI Falehau-'o Pasivulangi

To Leading Fire Fighter

1. Leading Fire Fighter 46. KATOA Sikalu Tevita
2. Leading Fire Fighter 47. FETU'U Piulitei
3. Leading Fire Fighter 48. MASALU Mafile'o Vilisoni
4. Leading Fire Fighter 49. VAHE Toni
5. Leading Fire Fighter 50. LAUTAIMI Feke'ila Sione
6. Leading Fire Fighter 51. LANGI Senituli
7. Leading Fire Fighter 52. FUNGALEI 'Alovivili
8. Leading Fire Fighter 53. TAUELANGI Ma'asi
9. Leading Fire Fighter 54. VEA Tonga 'a Pulonga
10. Leading Fire Fighter 55. POLO 'Afa
11. Leading Fire Fighter 56. FIFITA 'Akaula Penisimani

**Confirmation of Recruit Fire Fighter**

Six (6) Recruit Fire Fighters were confirmed by Cabinet (CD No. 117) on 10 February 2012 as Fire Fighters after completion of their 2 years probationary periods in accordance with the ministerial policy.

1. Recruit Fire Fighter 82 TU'ANGALU. Samisoni
2. Recruit Fire Fighter 83 FETU'U. Vaiola 'I Folauhola
3. Recruit Fire Fighter 84 PALU. 'Alokuo'ulu La'ikie Leiasu Sione
4. Recruit Fire Fighter 85 TA'UFO'OU Kaihau Siaosi
5. Recruit Fire Fighter 86 HALAHINGANO. Seluki
6. Recruit Fire Fighter 87 HOEFT. 'Emelio 'Alipate

**Expatriate Staff** - Nil

**Retirement, Resignation, Dismissal & Death on Duty**

- |     |                              |   |     |
|-----|------------------------------|---|-----|
| i)  | Retirement on medical ground | - | Nil |
| ii) | Dismissal                    | - | 1   |

1. Fire Fighter HUFANGA Vailiki Sione discharged with effective from 3<sup>rd</sup> August 2012 (*CD No.770, dated 31<sup>st</sup> August 2012*)

iii) Death on Duty - Nil

iv) Resignation

The following resignation was recommended and approved by Cabinet;

- 1) Senior Fire Fighter SIALE Konili 'Etuete resigned with effective from 27<sup>th</sup> March 2012 (*CD No.183*)

**Staff Movements**

A total of 11 administration and operational staffs were transferred within fire stations and divisions. Staff movements during the year are detailed below:

<u>Date</u>	<u>Name</u>	<u>Station/ Division (From)</u>	<u>Station/ Division (To)</u>
16/04/2012	AFC 15 Tu'ipulotu. O	Training & Development	Operation
13/06/2012	FO 21 Vaka. S	Angahä/ 'Eua	Training & Development
18/09/2012	FF 87 Hoeft. 'A	Operation	Community Safety
12/11/2012	DFC 2 Huni. S	Lapaha	Operation

12/11/2012	AFC 15. Tu'upulotu. O	Operation	Lapaha
12/11/2012	FC 5. 'Olie. T	Nukunuku	Administration & Corporate Services
12/11/2012	AFC 12 Mafi. S	Operation	Nukunuku
22/11/2012	SFF 29 Vaihu. S	Operation	Angahä/ 'Eua
23/11/2012	PFF 38 VEA. S	Angahä/ 'Eua	Operation

### **Length of Service**

Years	FC - AFC	FO	SFF	PFF	LFF	FF	RFF	CLERK
Under 1 yrs	-	3	-	-	-	-	-	-
1 – 5 yrs	-	-	1	-	-	10	6	1
5 – 10 yrs	-	-	6	10	11	21	-	-
10 – 15yrs	1	-	4	-	-	-	-	-
15 – 20 yrs	1	8	-	-	-	-	-	-
20 – 25 yrs	4	1	-	-	-	-	-	-
25 – 30yrs	5	-	-	-	-	-	-	-
Over 30yrs	4	-	-	-	-	-	-	-

*FC – Fire Commissioner*

*DFC – Deputy Fire Commissioner*

*FC – Fire Commander*

*AFC – Assistant Fire Commander*

*FO – Fire Officer*

*CO – Cadet Officer*

*SFF – Senior Fire Fighter*

*PFF – Principal Fire Fighter*

*LFF – Leading Fire Fighter*

*FF - Fire Fighter*

*RFF – Recruit Fire Fighter*

**Clerical Staff** - 1

### **Overseas Conference**

- ❖ Fire Commissioner. Lofia Heimuli attended the PIFSA **6<sup>th</sup> Annual Executive Planning Meeting** held in Samoa from 26<sup>th</sup> – 27<sup>th</sup> July 2012.
- ❖ Fire Commissioner. Lofia Heimuli attended the **PIFSA Annual General Meeting and Pacific Platform for Disaster Management** held in Noumea/ New Caledonia from 17<sup>th</sup> – 21<sup>st</sup> Sept 2012.

### **Overseas Training Course**

- ❖ Fire Commander. 7 FINEANGANOFO. Filisonu'u attended the **Fire Fighting Techniques** training course held in Japan from 25<sup>th</sup> July – 18<sup>th</sup> October 2012.

### **Local Training Course**

- ❖ Official visit of South Australian Metropolitan Fire Service officers and conducted training and maintenance of TFS fire appliances from 22<sup>nd</sup> September – 5<sup>th</sup> October 2012



*Officers from the SAMFS with TFS Staff*



*SAMFS Officer Glenn Benham conducting Training with TFS Staff*



*SAMFS Officer Glenn Benham Carrying Out Inspection to FS5 Staff (Lapaha Fire Station)*



*SAMFS Officers Geoff William and David Schmerl Conducting Training on How To Operate Pump on the Fire Truck*

**Sustainable Development Program (SDP)**

- 1) Four (4) new fire appliances (trucks) including surplus fire equipments were kindly donated in 2012 by the South Australian Metropolitan Fire Services (SAMFS) to the Tonga Fire Services (TFS) through its existing partnership program.



*Four (4) new Fire Appliances (Trucks) with surplus fire equipments donated by SAMFS*

## Donated Vehicles

Two (2) new vehicles were kindly donated by the Government of Japan to the local fire stations of Neiafu/ Vava'u and and Angaha/ 'Eua. The vehicles were officially handed over by the Japanese Ambassador to Tonga – His Excellency Dr. Kazuchika Hamuro on 21<sup>st</sup> November 2012.



*Two (2) New Vehicles kindly donated  
by the Government of Japan*



*Japanese Ambassador to Tonga, HE Dr. Kazuchika Hamuro  
handedover the Car Keys to Deputy Primister, Hon Samiu Vaipulu*

# Operational Activities

## Emergency Incident Responses

The Tonga Fire Services responded to a total of 234 emergency incidents during the year, an increase by 22 incidents (10.3%) compared to the previous year.

These are categorised by the type of emergency incidents as shown below:

### Comparison of Fire & Other Incidents

FY	2011			2012		
<b>Total No. of Fire &amp; Other Incidents</b>	<b>212</b>			<b>234</b>		
<b>Type of Incident</b>	Structural fire	68	32.2%	Structural fire	57	24.3%
	Bush fire	71	33.6%	Bush fire	92	39.3%
	Other fire	38	17.9%	Other fire	58	24.7%
	Special Services	7	3.3%	Special Services	2	0.85%
	False Alarm	28	13.2%	False Alarm	25	10.6%
<b>Incidents By Districts</b>	Tongatapu	190	90%	Tongatapu	203	86.7%
	Vava'u	16	7.5%	Vava'u	16	6.8%
	Ha'apai	3	1.4%	Ha'apai	13	5.5%
	'Eua	3	1.4%	'Eua	2	0.85%
<b>Fatality</b>	<i>One (1) in structural fire and Four (4) in vehicle accident</i>			<i>One (1) in structural fire and One (1) in vehicle accident</i>		
<b>Estimated Loss</b>	2,190,662			1,537,705		
<b>Fire &amp; Other Incident Occurred By Month</b>	Highest	August	33	Highest	December	42
	Lowest	February	7	Lowest	February	7

**Structural Fire:** Of the total emergency incidents, 57 were for structural fires which decreased by 16.1% from the previous year. Structural fires include *residential, commercial and industrial fires*. Probable Causes of these fires are detailed below:

Probable Causes of Structural Fires	2011	2012
Accidental	1	-
Arson	2	3
Candle	3	6
Mosquito Coil	8	2
Kerosene Lamb	-	1
Electrical	2	2
Cooking Unattended	1	3
Playing with matches	2	-
Stove	1	6
Embers from fire places	2	-
Setting fire to rubbish pile	4	2
Undetermined	42	32
<b>TOTAL</b>	<b>68</b>	<b>57</b>

**Bush Fire:** A total of 92 calls attended to by the Tonga Fire Service throughout Tonga, 39.3% was attributed to bush fires. This is significant proportion of the operations as bush fires accelerate the numbers of fire occurred annually.

**Other Fires:** Increased by 20 incidents (52%) from 2011 to a total number of 58 other fires including rubbish, electrical and etc.

**Special Services:** A total of 2 special services were attended to during the year. This service had decreased by 5 incidents (71.4%) in comparison of the year 2012 to 2011.

**False Alarm:** A total of 25 calls were made to Fire Alarm Connections and reported False Alarm. A 10.7% decrease from the previous year.



*Structural Fire (Chinese Store) at Tofoa*



*Fire Fighters Extinguishing a Structural Fire (Dwelling House)*



*Road Accident Drill with Total Ltd (company)*

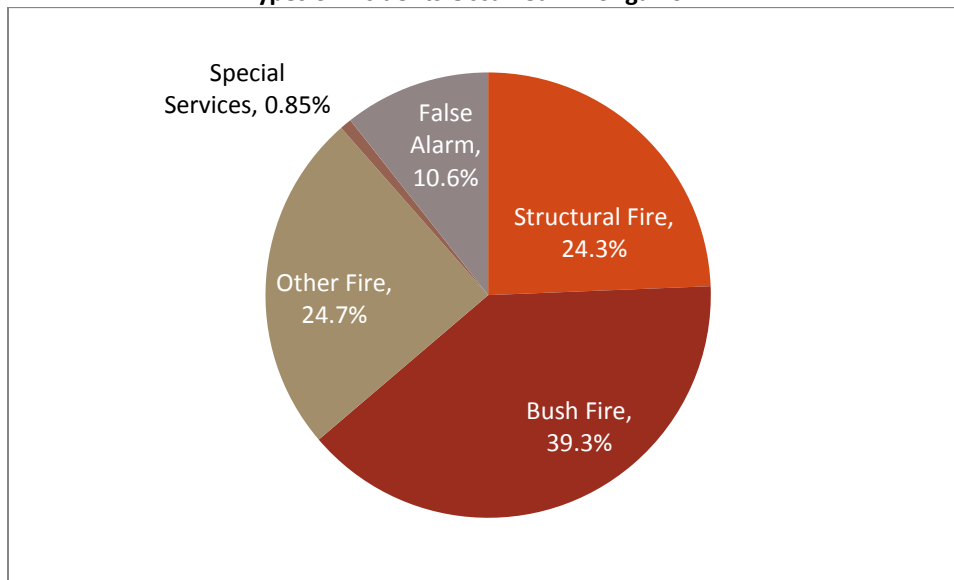


*Structural Fire (dwelling house) at Longolongo*

**Fire & Other Incidents Occurred in 2012**

YEAR	2012			
<b>Total No. of Fire &amp; Other Incidents</b>	<b>234</b>			<b>\$</b>
<b>Type of Incidents</b>	<b>Structural Fire</b>	57	24.3%	1,202,025
	<b>Bush Fire</b>	92	39.3%	248,760
	<b>Other Fire</b>	58	24.7%	82,380
	<b>Special Services</b>	2	0.85%	3,050
	<b>False Alarm</b>	25	10.6%	1,490
<b>Incident By Districts</b>	<b>Tongatapu</b>	203	86.7%	1,142,350
	<b>Vava'u</b>	16	6.8%	292,055
	<b>Ha'apai</b>	13	5.5%	21,300
	<b>'Eua</b>	2	0.85%	82,000
<b>Fatality</b>	<i>One (1) in structural fire and One (1) in vehicle accident</i>			
<b>Estimated Loss</b>	<b>\$1,537,705</b>			
<b>Fire &amp; Other Incidents Occurred by Months</b>	<b>Highest</b>	December	42	17.9%
	<b>Lowest</b>	March	7	2.9%

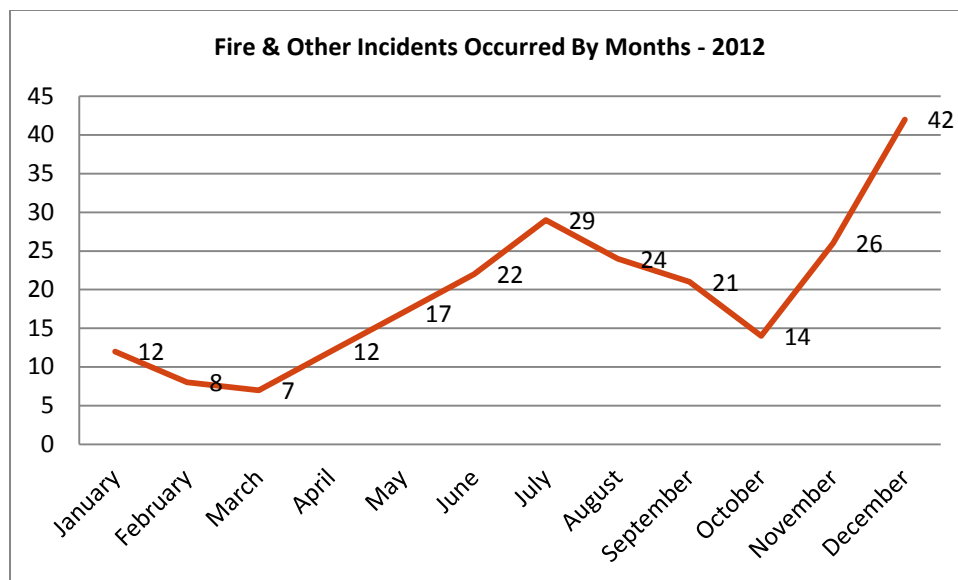
**Types of Incidents Occurred in Tonga 2012**



**Fire & Other Incidents Occurred & Estimated Loss – 2012**

No.	Months	Number of Fires/ Other Incidents Occurred	Estimated Loss (\$)
1	January	12	169,550
2	February	8	70,600
3	March	7	41,530
4	April	12	54,820
5	May	17	205,475
6	June	22	65,840
7	July	29	235,080
8	August	24	29,650
9	September	21	231,550
10	October	14	151,420
11	November	26	246,150
12	December	42	36,040
	<b>TOTAL</b>	<b>234</b>	<b>1,537,705</b>





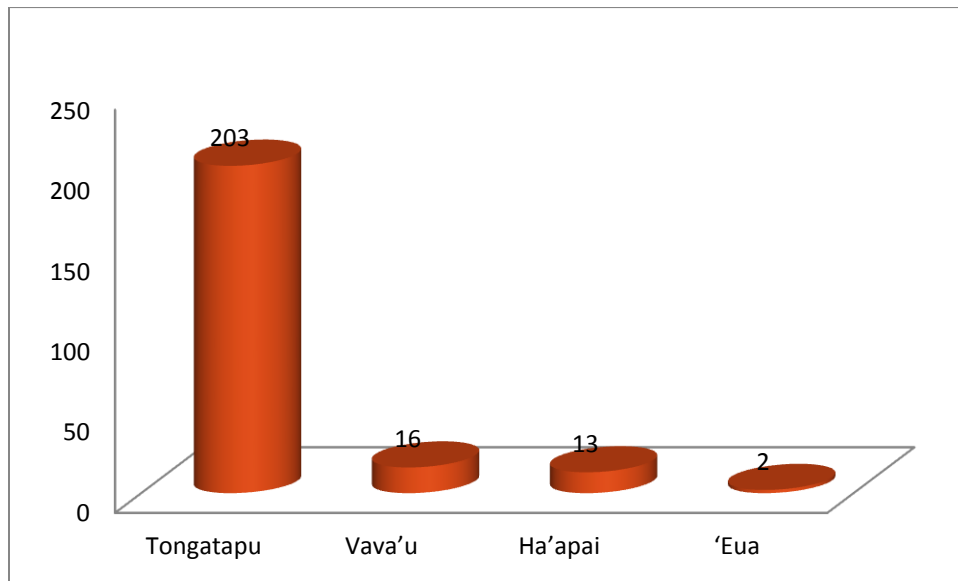
**Fire & Other Incidents Responded By Fire Stations - 2012**

Stations	Nuku'alofa	Vava'u	Ha'apai	'Eua	Lapaha	Nukunuku
<b>Types of Incidents</b>						
Structural Fire	35	6	2	2	5	7
Bush Fire	39	4	11	-	24	14
Other Fire	40	5	-	-	7	6
Special Services	1	-	-	-	1	-
False Alarm	24	1	-	-	-	-
<b>TOTAL</b>	<b>139</b>	<b>16</b>	<b>13</b>	<b>2</b>	<b>37</b>	<b>27</b>
<b>Estimated Loss</b>						
Structural Fire	677,920	85,925	10,000	82,000	16,100	330,080
Bush Fire	15,320	205,650	11,300	-	6,970	9,520
Other Fire	42,700	380	-	-	12,450	26,850
Special Services	3,000	-	-	-	50	-
False Alarm	1,390	100	-	-	-	-
<b>TOTAL</b>	<b>740,330</b>	<b>292,055</b>	<b>21,300</b>	<b>82,000</b>	<b>35,570</b>	<b>366,450</b>
<b>Fatality</b>						
Structural Fire	-	-	1	-	-	-
Vehicle Accident	1	-	-	-	-	-

**Approximated Times Fire & Other Incidents Occurred - 2012**

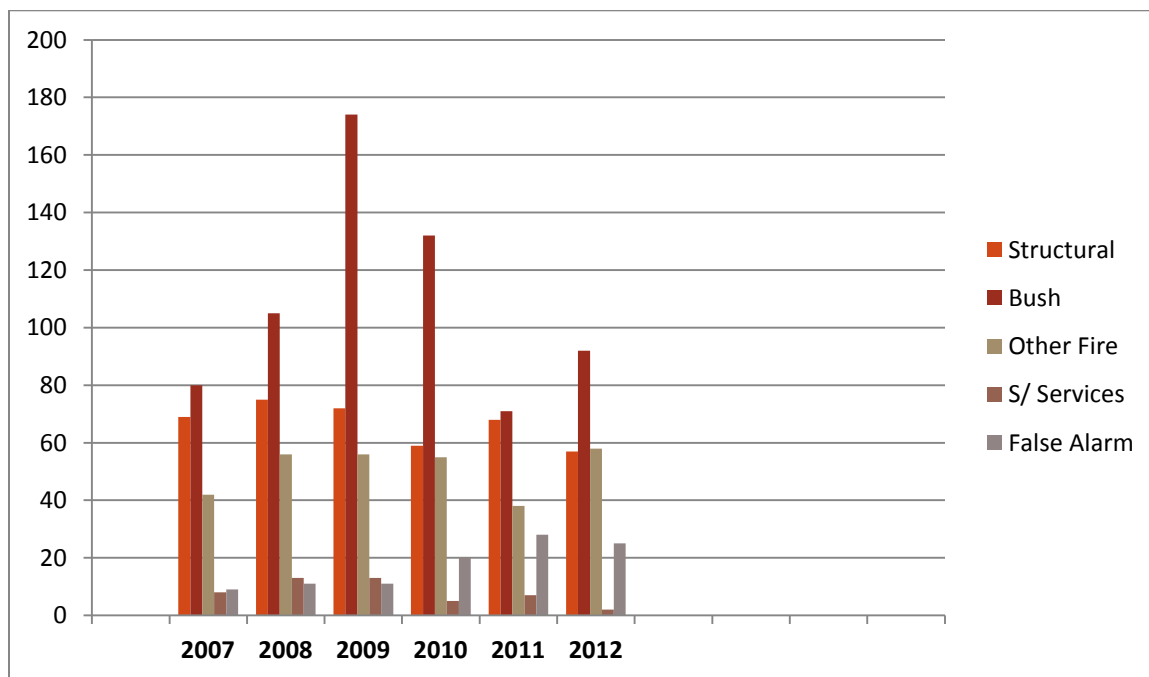
Times		0000Hrs – 0400Hrs	0400Hrs – 0800Hrs	0800Hrs – 1200Hrs	1200Hrs – 1600Hrs	1600Hrs – 2000Hrs	2000Hrs – 2400Hrs	TOTAL
<b>Types of Incidents</b>	Structural Fire	11	9	8	9	8	12	57
	Bush Fire	-	1	10	59	20	2	92
	Other Fire	5	4	10	12	20	7	58
	Special Services	-	-	-	-	2	-	2
	False Alarm	3	4	4	6	4	4	25
		<b>19</b>	<b>18</b>	<b>32</b>	<b>86</b>	<b>54</b>	<b>25</b>	<b>234</b>

### Fire & Other Incidents Responded By Fire Stations – 2012



### TREND ANALYSIS AND VARIATION 2007 – 2012

Whilst Bush fire incidents continued to dominate the total number of callouts, Structural fires have remained constant averaging more than 50 incidents per year.



# Community Safety Activities

## Fire Safety Awareness

A total of 96 community awareness activities were undertaken during the year compared to 74 in 2011. These comprised of Lectures and Demonstrations, Evacuation exercises upon request, T.V and Radio Awareness Programmes and specific awareness programs such as visits to community groups including rural groups, school visits and etc.



*CEP conducted by Fire Prevention Team to Kindergarten School*



*Fire Prevention Team conducting a lecture on how to use a Fire Extinguisher*



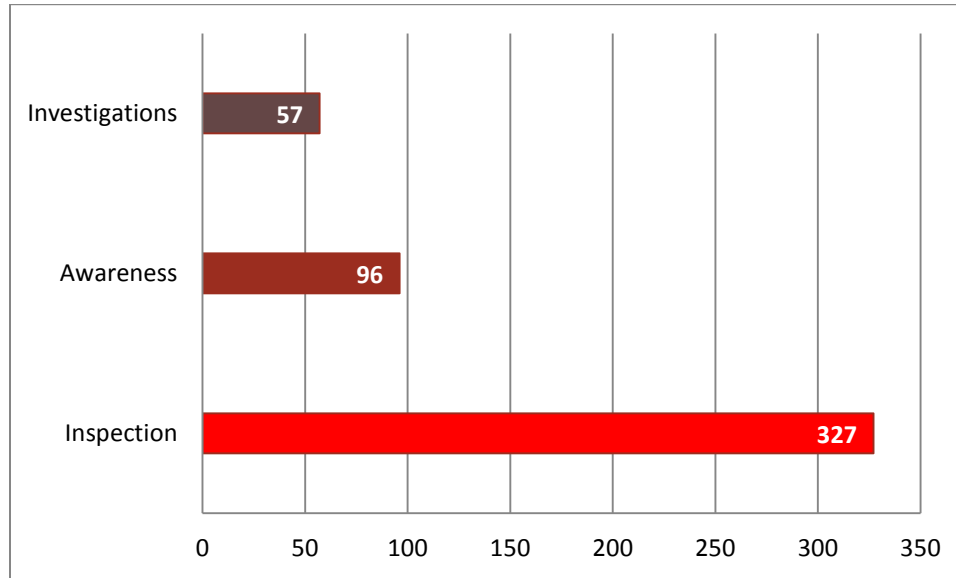
*Fire Prevention Team showing Business Employees on how to operate a Fire Extinguisher*



*Fire Prevention Team conducting Fire Safety Inspection*

## Fire Safety Inspection

Frequent inspection of commercial buildings such as restaurants with liquor licenses, petroleum product sales service and retail & wholesale liquor premises constituted bulk of the safety programme for the year. A total number of 327 premises were inspected throughout Tonga for fire safety in order to obtain business license(s).



*Fire Safety Inspection at Liquor Store*



*T.V and Radio Fire Awareness Programme known a  
“Tala Kei Kapa Na’a Ke Tō Ki Mala”*

## Equipment Donated to Community Safety Division (CSD)

In 2012 the National Pacific Insurance (Tonga) Ltd and the Dominion Insurance Company kindly offered a new *Laptop*, *Data Projector* and a *Screen Projector* as per requested by CSD subject to assist with their Community Education Program (CEP) to schools, private companies and communities.



*NPI Country Manager Handedover  
a new Laptop to CSD*



*Representative from the Dominion Insurance Company  
Handedover a new Data Projector to CSD*

## Maps (Building Design) Assessment

A total of 165 maps including both commercial and private buildings were submitted to Tonga Fire Service for fire safety examination prior to being issued a building permit by the Building Controller.

## Problems Affecting the Service

### Problems Affecting the Service

- a) Insufficient manpower.
- b) No appropriate water reticulation or physical water reservoir for firefighting purpose in small villages.
- c) Insufficient water pressure for fire fighting in areas not included in the Nuku'alofa reticulation system.
- d) Late reporting of fires from source of fire outbreak.
- e) Remoteness of outer villages from Fire Stations.
- f) Not enough hoses and fire equipment(s).
- g) Insufficient funds allocated annually by Government to effectively and efficiently operate the service delivery of the Fire Service.
- h) Not enough vehicles for daily administrative operations.
- i) Lack of supporting facilities for the development of the Community Safety Division.

# Budget Estimates

## STATEMENT OF EXPENSES FOR YEAR ENDING 31<sup>st</sup> DECEMBER 2012

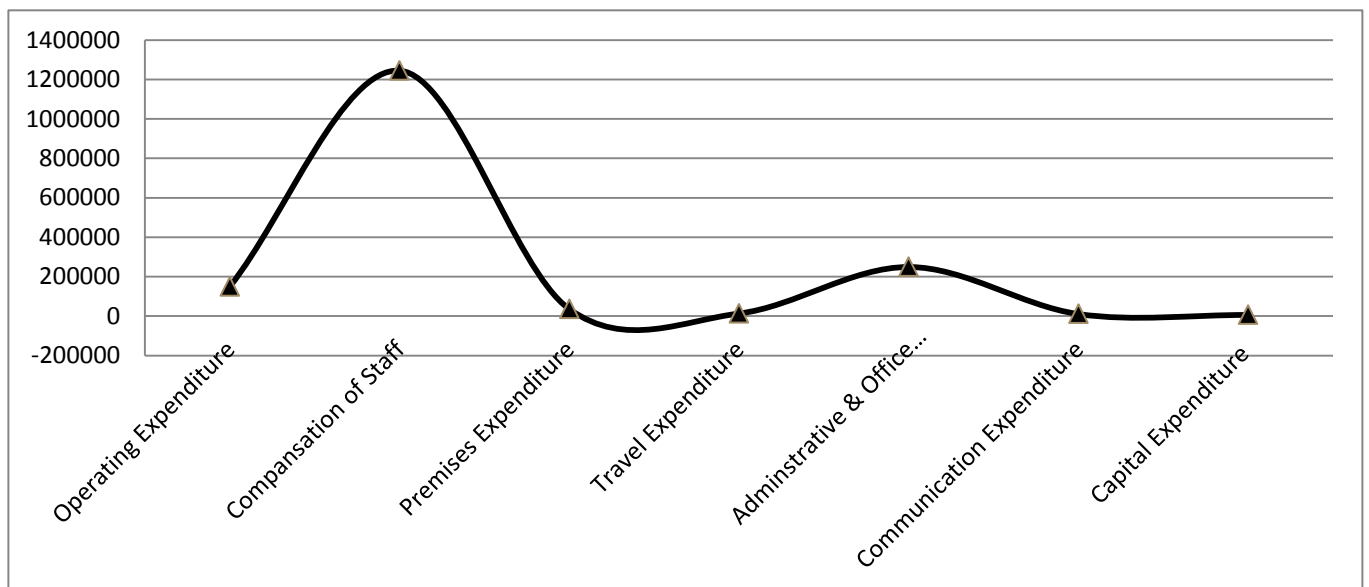
	\$	\$	\$
<b>Proposed Budget for Operating Expenses for Year Ending 31<sup>st</sup> Demcember 2012</b>			<b>\$ 1,702,650.00</b>
<b>Operation Expenditure</b>			
Maintenance of Vehicle	\$ 39,148.59		
Fuel	\$ 57,694.65		
Ration & Diets	\$ 52,551.51	\$ 149,394.75	
<b>Premises Expenditure</b>			
Water	\$ 7,710.72		
Maintenance of Compound	\$ 7,917.69		
Electricity	\$ 20,316.68	\$ 35,945.09	
<b>Travel Expenditure</b>			
Domestic Travel	\$ 9,567.02		
New Vehcile	\$ -		
Overseas Travel	\$ 3,462.60	\$ 13,029.62	
<b>Communication Expenditure</b>			
Telecommunication Charge	\$ 8,230.61		
Email and Internet	\$ 2,263.16	\$ 10,493.77	
<b>Compensation of Staff</b>			
Salaries	\$ 1,118,729.94		
Government Contribution	\$ 115,956.81		
Acting Allowance	\$ 2,799.00		
Minster / CEO Benefit	\$ 7,000.00	\$ 1,244,485.75	
<b>Capital Expenditure</b>			
Technical Equipment	\$ 5,836.94	\$ 5,836.94	
<b>Adminstrative &amp; Office Expenditure</b>			
Office Supplies	\$ 19,425.11		
Maintenance of office equipment	\$ 3,530.06		
Printing and Stationary	\$ 9,355.04		
Broadcasting	\$ 18,228.06		
Freight	\$ 139,857.10		
Advertising and Publicity	\$ 8,605.23		
Uniforms	\$ 35,614.92		
Licence	\$ 8,640.00		
Others	\$ 5,769.60	\$ 249,025.12	\$ 1,708,211.04
<b>Expenditure over Proposal Budget</b>			<b>\$ (5,561.04)</b>

**NOTE;**

Please note that total percentage operate for 2012 exceeded the budget by 9%, the major contribution for this exceeded (9%) was due to freight being done in April & May 2012 with \$97,223.86 & \$42,365.94 respectively against proposal budget for freight expenses of \$20,000 only.

## OPERATING EXPENDITURE TREND & MOVEMENTS FOR YEAR ENDING 2012

<u>Expenditure Items</u>	<u>FY 2012</u>
Operating Expenditure	149,394.75
Compansation of Staff	1,244,485.75
Premises Expenditure	35,945.09
Travel Expenditure	13,029.62
Adminstrative & Office Expenditure	249,025.12
Communication Expenditure	10,493.77
Capital Expenditure	5,836.94
<b>Total Expenditure</b>	<b><u><u>\$1,708,211.04</u></u></b>



## DIVISIONS vs PROPOSAL BUDGET (OPERATING EXPENSES)

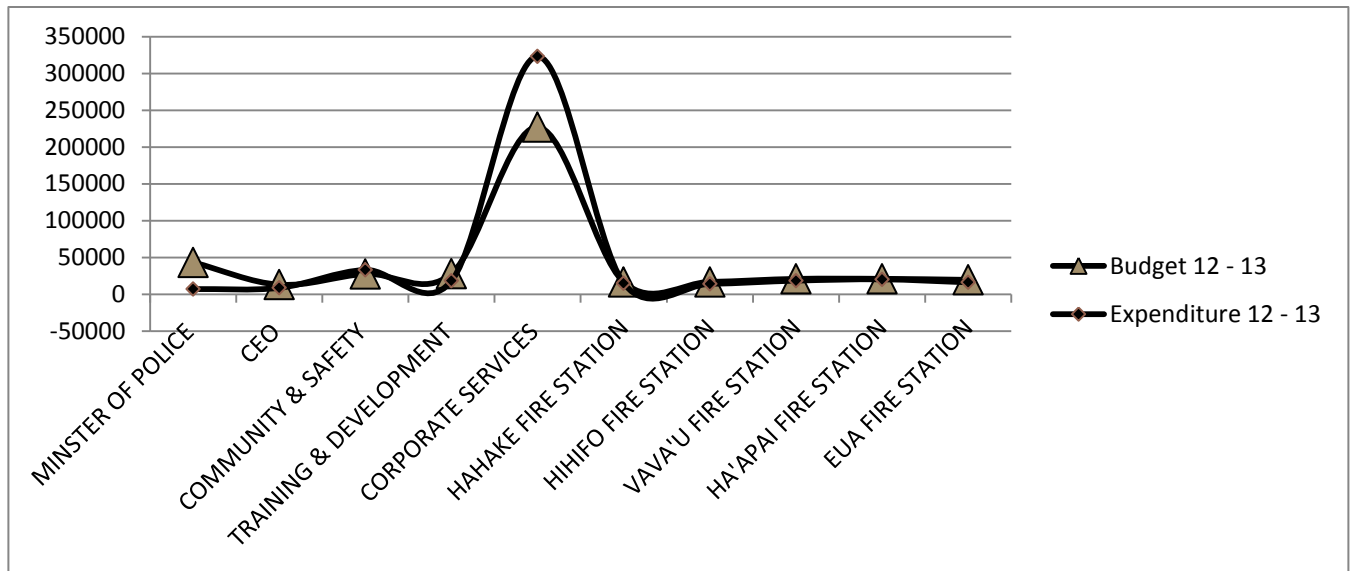
<u>Divisions &amp; Branches</u>	<u>Proposal Budget 2012</u>	<u>Expenditure 2012</u>
Minister of Police	43,250.00	6,962.68
CEO	12,900.00	8,635.69
Community Safety	27,600.00	32,982.79
Training & Development	28,000.00	18,120.24
Organisational	226,956.50	323,018.80
Hahake Fire Station	16,389.50	15,001.53
Hihifo Fire Station	16,700.00	14,112.74
Vava'u Fire Station	20,800.00	18,420.72
Ha'apai Fire Station	20,900.00	20,167.78
'Eua Fire Station	19,500.00	16,101.32



Total per Division & Branches

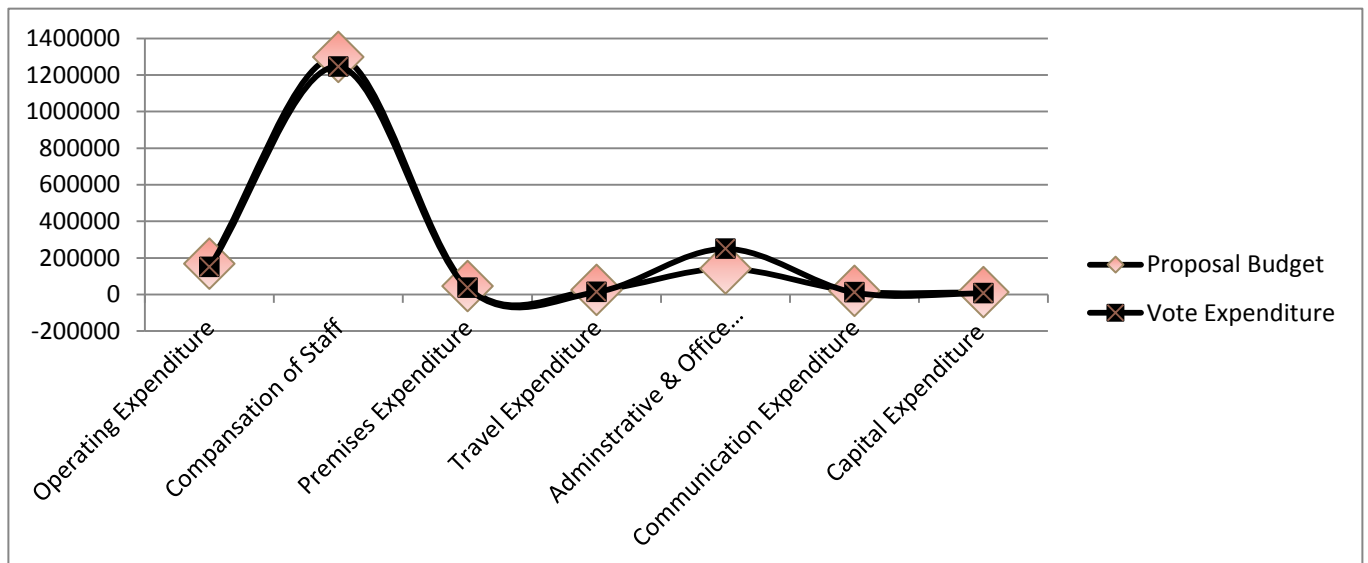
\$432,996.00

\$473,524.29



**VOTE EXPENDITURE vs PORPOSAL BUDGET 2012**

	<u>Proposed Budget</u>	<u>Vote Expenditure</u>
Operating Expenditure	167,489.20	149,394.75
Compansation of Staff	1,297,154.00	1,244,485.75
Premises Expenditure	44,793.11	35,945.09
Travel Expenditure	23,794.50	13,029.62
Adminstrative & Office Expenditure	140,969.61	249,025.12
Communication Expenditure	17,399.59	10,493.77
Capital Expenditure	11,050.00	5,836.94
	<b>\$1,702,650.00</b>	<b>\$1,708,211.04</b>



**BUDGET DETAIL OF ALLCATION & MOVEMENTs per SUB - PROGRAM**

<b>SUB - PROGRAM</b>	<b>Consolidate Salaries</b>	<b>Government Contribution</b>	<b>Operating Expenses</b>	<b>Total</b>
Leadership	48,400.00		56,150.00	104,550.00
Community Safety	97,279.50		27,600.00	124,879.50
Training & Development	76,090.00		28,000.00	104,090.00
Organisation	986,140.50	93,304.00	289,686.00	1,369,130.50
<b>TOTAL</b>	<b>\$1,207,910.00</b>	<b>\$93,304.00</b>	<b>\$401,436.00</b>	<b>\$1,702,650.00</b>
<b>(less) /plus; TRANSFER APPROVAL</b>				
Transfer Approval from	(56,314.38)			(56,314.38)
Transfer Approval to		24,754.38	31,560.00	56,314.38
<b>FINAL BUDGET</b>	<b>\$1,151,595.62</b>	<b>\$118,058.38</b>	<b>\$432,996.00</b>	<b>\$1,702,650.00</b>
less; <b>Expenses</b>	1,118,729.94	115,956.81	473,524.29	1,708,211.04
<b>Expenditure over Proposal Budget</b>	<b>\$32,865.68</b>	<b>\$2,101.57</b>	<b>\$(40,528.29)</b>	<b>\$(5,561.04)</b>

## Conclusion

The year Two Thousand and Twelve (2012) results have been satisfactory despite certain constraints and some natural problems which obstructed the advancement of the Service.

The fact that the Fire Service does not have the proper equipment and funds required to operate effectively do not alter the Fire Service venture to conduct its functions effectively. Accordingly, all could be improved with efficient equipment and more available funds.

On behalf of the Tonga Fire Services I would like to extend our sincere thank to the Honourable Minister of Police, Prisons & Fire Services for all the guidance, leadership and support throughout the year 2012. This has enabled the Fire Service to accomplish its goals in protecting lives and properties of the people of Tonga from fires and other emergencies.

Apologies are hereby extended to any shortfalls in our endeavour to live up to our goal.

.....  
Lofia-'I-Vailahi Heimuli  
**Fire Commissioner**

# Appendix

## Fire & Other Incidents Responded by Tonga Fire Services - 2012

S/No.	Types of Incident	Location	Date/Time Reported	Owner/ Occupier	Probable Cause	Properties Involved	Estimated Loss
1	False Alarm	Royal Palace (Nuku'alofa)	07/01/2012 0308Hrs	HM King Tupou VI	Undetermined	Fire Alarm System	50
2	Bush Fire	Leimatu'a	11/01/2012 1305Hrs	Siaosi Vaka'uta (m) 70yrs/ Sione Tali (m) 58 yrs	Setting Fire	Bush Fire	150
3	Bush Fire	Tofoa	13/01/2012 1421Hrs	Hu'ahulu Ha'unga (m) 40yrs	Undetermined	Bush Fire to 2acres, pata tree	150
4	Structural Fire	Kolomotu'a	16/01/2012 1513Hrs	Vaiola Funaki (m) 59yrs	Undetermined	7m x 5.3m dwelling fully destroyed	8000
5	Structural Fire	'Ohonua	16/01/2012 1627Hrs	Vaimana Tau (f) 87yrs	Undetermined	30ft x 40ft dwelling fully destroyed	80000
6	Bush Fire	Tokomololo	16/01/2012 1750Hrs	Fe'ofa'aki Tu'i'onetoa (m) 40yrs	Setting Fire	Bush Fire to ½ acre	50
7	Structural Fire	Kolofo'ou	16/01/2012 2227Hrs	Government of Tonga	Undetermined	12m x 10m one of the office at the Reserve Bank fully destroyed	27000
8	False Alarm	Tu'anuku	17/01/2012 1527Hrs	-	-	-	100
9	Structural Fire	Tatakamotonga	21/01/2012 2249Hrs	Folau Lätü (m) 59yrs/ Vakafisi Lätü (m) 18yrs	Setting fire by a handicap person	2.5m x 2.5m dwelling fully destroyed	500
10	Structural Fire	Ha'ateiho	22/01/2012 0648Hrs	Malia Lausi'i (f) 72yrs/ Cehle Werner (m) 52yrs	Undetermined	5.5m x 7.8m tool shed, solar system fully destroyed	45000
11	Other Fire	Tatakamotonga	23/01/2012 1030Hrs	Malakai Siale (m) 36yrs	Undetermined	L12341 fully destroyed	8500
12	False Alarm	Tofoa (Vaiola Hospital)	31/01/2012 2244Hrs	Government of Tonga/ Ministry of Health	Undetermined	Fire Alarm System	50
13	Other Fire	Nukunuku	02/02/2012 0250Hrs	Kalisi Tuionuku (f) 27yrs	Arson	C15155 fully destroyed	9000
14	Structural Fire	Sopu	04/02/2012 1759Hrs	Pasoni Maliu (m) 43yrs	Undetermined	7.26m x 4.92m dwelling fully destroyed	7000
15	False Alarm	Royal Palace (Nuku'alofa)	10/02/2012 1455Hrs	HM King Tupou VI	Fire Alarm battery too low	Smoke Detector	50
16	Structural Fire	Tokomololo	12/02/2012 1858Hrs	Sefa Tu'akoi (m) 45yrs Salesi Tu'akoi (m) 30yrs	Gas Stove	5m x 3m dwelling fully destroyed	2500
17	False Alarm	Royal Palace (Nuku'alofa)	17/02/2012 1528Hrs	King Tupou VI	Undetermined	Fire Alarm System	50
18	Other Fire	Nukunuku	21/02/2012 0109Hrs	'Alimeti Tuionuku (m) 30yrs	Arson	C14168 fully destroyed	8000
19	Structural Fire	Fasi – moe – Afi	23/02/2012 2328Hrs	Tomasi Mafua Hingano (m) 63yrs/ Solomone Tu'ungafasi (m) 31 yrs	Undetermined	30m x 20m dwelling fully destroyed	42000
20	Other Fire	Vaini	24/02/2012 1220Hrs	Tevita Palaiti (m) 80yrs	Cooking	9.3 x 5.9m dwelling fully destroyed	2000
21	Other Fire	Veitongo	09/03/2012 0554Hrs	Va'a Toloke	Undetermined	C15155 fully destroyed	10000
22	Other Fire	Tofoa Ministry of Health	09/03/2012 1959Hrs	Seteone 'Anitema (m) 54yrs	Accidental	J5667 partly damage	800
23	Structural Fire	Haveluloto	23/03/2012 0459Hrs	Tonga Constitutional Church	Electricity	40m x 20m Church partly damage	250
24	Bush Fire	Haveluloto	24/03/2012 1058Hrs	Soakimi Tu'ipulotu Palu (m) 72yrs	Setting Fire	Bush Fire	50
25	Bush Fire	Haveluloto	26/03/2012	Saia Moehau	Setting Fire	Bush Fire to 3acres,	350

			1321Hrs			pele plantation,banana, 1 tree	
26	Structural Fire	'Isileli	27/03/2012 0208Hrs	Vilivuni Kupu (m) 42yrs/ Sione Tali Mafi (m) 20yrs	Gas Stove	11m x 10m dwelling fully destroyed	30000
27	Structural Fire	Kahoua	27/03/2012 0328Hrs	'Isileli Kongaika (m) 62yrs/ Noa Na'a (m) 29yrs	Arson	10.40m x 9.80m dwelling house partly damaged	80
28	Other Fire	Ma'ufanga	06/04/2012 0437Hrs	Hon. Fakafanua	Undetermined	Toa Tree	100
29	False Alarm	Nuku'alofa (Molisi Tonga)	07/04/2012 0316Hrs	Feleti Sevele	Undetermined	Fire Alarm System	40
30	False Alarm	Tofoa (Vaiola Hospital)	09/04/2012 1953Hrs	Government of Tonga/ Ministry of Health	Undetermined	Fire Alarm System	80
31	Structural Fire	Tu'anequivale	10/04/2012 1907Hrs	Matangisina 'Uhila (m) 52yrs	Candle	7.4m x 4.9m dwelling partly damaged	1200
32	Structural Fire	Kanokupolu	11/04/2012 0200Hrs	Katoanga Fa'oa (m) 52yrs	Gas Stove	32m x 42m dwelling fully destroyed	40000
33	Other Fire	Kahoua	14/04/2012 1307Hrs	Saia Tongia (m) 34yrs	Undetermined	L9631 partly damaged	4000
34	Other Fire	Mataika	20/04/2012 1919Hrs	Government of Tonga	Undetermined	Rubbish Fire	30
35	Other Fire	Tofoa	21/04/2012 1938Hrs	Tevita Kamoto (m) 73yrs/ Nesiasi Kamoto (m) 40yrs	Setting Fire	1 Wreck Vehicle	70
36	Structural Fire	Te'ekiu	23/04/2012 2254Hrs	Mateaki Lauhingo (m) 43yrs/ Vaka Lauhingo (m) 41yrs	Candle	8.26m x 4.16m dwelling fully damaged	8000
37	Structural Fire	Tofoa	24/04/2012 1404Hrs	Government of Tonga/ Fatui Langilangi (m) 48yrs	Gas Stove	16m x 12m Government house partly damaged	150
38	Other Fire	Veitongo	28/04/2012 1900Hrs	Va'a Toloke (m)	Setting Fire to rubbish pile	1 Wreck Vehicle, rubbish	150
39	Other Fire	Kolofo'ou (Hoilday Taxi Base)	30/04/2012 0355Hrs	Timote Fotu (m) 25yrs	Undetermined	C 12195 partly damaged	1000
40	Structural Fire	Mataika (Vava'u)	01/05/2012 1409Hrs	Pasimi Uasi (m) 73yrs/ Mele Hingano Ngü (f) 34yrs	Undetermined	5.6m x 11.1m dwelling fully destroyed	50620
41	Structural Fire	Vaini Beulah College	04/05/2012 0050Hrs	Seventh Day Adventist/ Beulah College	Arson	5.8m x 7m one class room partly damaged	2500
42	False Alarm	Popua	04/05/2012 2027Hrs	-	-	-	150
43	Structural Fire	Kolofo'ou (Oneway Road)	05/05/2012 0456Hrs	Na'a Lemoto/ Valu Talivakaloa (m) 40yrs	Cooking	12m x 11m Saprina Restaurant partly damaged	250
44	Other Fire	Kolomotu'a	05/05/2012 1049Hrs	Government of Tonga	Undetermined	Touhuni tree fully destroyed	130
45	Bush Fire	Lafalafa	07/05/2012 1035Hrs	Prince Tu'ipelehake/ Lesieli Namoa (m) 32yrs	Cigarette bud	Bush Fire to 24acres	450
46	Bush Fire	Fatumu	07/05/2012 1824Hrs	Soloi 'Ata'ata (f) 52yrs	Undetermined	Bush Fire	150
47	Bush Fire	Vaini	08/05/2012 1959Hrs	Hon. Ma'afu Tukui'aulahi (m) 58yrs	Undetermined	Bush Fire to 30 pole	100
48	Bush Fire	Ma'ufanga	09/05/2012 1959Hrs	Tomasi Fakataumai (m) 54yrs Tomasi .F	Setting Fire	Rubbish ,broken washing machine, broken freezer	3000
49	Structural Fire	Hala -'o - Vave	12/05/2012 0051Hrs	Suliet Ha'unga (f) 55yrs/ Sione Lavulava (m) 48 yrs	Undetermined	17mx12m dwelling fully destroyed	92000
50	Other Fire	Ma'ufanga	12/05/2012 1104Hrs	FIMCO Limited/ Asia Pacific Limited	Welding	Wreck Vehicles	70
51	Other Fire	Nuku'alofa	18/05/2012 1622Hrs	Tasi Vikilani (m) / Kulisitofa Kalonihea (m) 31yrs	Undetermined	Bush Fire	50
52	Other Fire	Pahu	19/05/2012 0942Hrs	Salesi Tohi (m) 49yrs	Undetermined	TD 27 partly damaged	250
53	Structural Fire	Makave	24/05/2012 0910Hrs	Tevita Kale (m) 77yrs	Undetermined	7.04m x 5.01m dwelling fully destroyed	29305

54	Structural Fire	Fasi – moe – Afi	25/05/2012 2315Hrs	'Etueni Ikahihifo (m)/ Tonga Katoa (m) 37yrs	Undetermined	10.9m x 5m dwelling fully destroyed	24000
55	Bush Fire	Nualei	31/05/2012 1335Hrs	'Asitā Langi (m)/ Sione Mavaetangi (m) 56yrs	Setting Fire	Bush Fire to 3acres, pata tree	450
56	Structural Fire	'Ohonua	31/05/2012 2300Hrs	Viliami Hausia (m) 68yrs	Candle	10ft x 8ft dwelling fully destroyed	2000
57	Other Fire	Lapaha	01/06/2012 1255Hrs	Kolio Vaka'uta (m) 42yrs	Setting Fire to rubbish pile	Rubbish Fire, broken freezer	50
58	Other Fire	Mata – ki – 'Eua	02/06/2012 1217Hrs	Free Wesleyan Church of Tonga Queen Sālote College	Setting Fire	Bush fire to 8 acres of cassava, hopa trees and taro plantation	300
59	Other Fire	Kolofo'ou	02/06/2012 1550Hrs	Venusi Taumoepeau(m) 52yrs	Setting Fire	Rubbish Fire 6m long, 6m wide	50
60	Other Fire	'Isileli	03/06/2012 1106Hrs	Siuva Manuapule/ Viliami Taulaki	Undetermined	Rubbish Fire	40
61	False Alarm	Tofoa (Vaiola Hospital)	04/06/2012 0356Hrs	Government of Tonga/ Ministry of Health	Undetermined	Fire alarm system	50
62	Bush Fire	Lafalafa	05/06/2012 1410Hrs	Prince Tu'ipelehake Sioeli Ha'amea (m) 43yrs	Setting Fire	Bush fire to 50 acres	400
63	Bush Fire	Koulo	06/06/2012 1542Hrs	Viliami Molitika (m) 68yrs	Setting Fire	Bush Fire to 8 acres	1500
64	Bush Fire	Tongoleleka	06/06/2012 1548Hrs	Kelepi Fotu	Setting Fire	Bush Fire to 4 acres	2500
65	Bush Fire	Holopeka	06/06/2012 1945Hrs	'Inoke Lātū (m) 57yrs	Undermined	Bush Fire to ½ acre	250
66	Bush Fire	Toloa	06/06/2012 2001Hrs	Lord Kalaniuvalu Kolisi Ko Tupou	Undermined	Bush Fire to 4 acres,	350
67	Structural Fire	Fua'amotu	08/06/2012 0012hrs	Hon. Tu'ipelehake Moe'ilo Fakaulu (m) 57yrs	Candle	12m x 9m dwelling partly destroyed	300
68	Other Fire	Havelu	08/06/2012 0138Hrs	Sosaia Vaka (m) 70yrs Paula 'Ahome'e (m) 22yrs	Accidental	C12504 fully destroyed	6000
69	False Alarm	Nuku'alofa (Westpac Bank of Tonga)	16/06/2012 1515Hrs	Government of Tonga Westpac Bank of Tonga	Water inside the detector	Smoke Detecor	50
70	Bush Fire	Mata – Ki – 'Eua	19/06/2012 1228Hrs	Queen Salote College Luahea Tupe (m) 42yrs	Setting Fire	Bush Fire	30
71	Other Fire	Houmakelikao	20/06/2012 1300Hrs	Free Tonga Church Houmakelikao 'Automalu Tupou (m) 33yrs	Mixing of Asphalt	Grass Fire to ½ acre	120
72	Other Fire	Fasi – moe – Afi	21/06/2012\ 2025Hrs	Government of Tonga Sefo Manilala	Setting Fire to rubbish pile	Dead trees, rubbish	250
73	Bush Fire	Malapo	23/06/2012 1447Hrs	'Etika Koka (m) 54yrs	Undetermined	Bush Fire to 3 acres	150
74	Bush Fire	Tufumahina	25/06/2012 1403Hrs	HM King Tupou VI Tevita Tufui (m) 58yrs	Setting Fire	Bush Fire to 7 acres	350
75	Structural Fire	Ha'afeva	26/06/2012 0930Hrs	<b>Pua TONATA (m) 81yrs *Died in the house fire</b>	<b>Karosene Lamp</b>	<b>14'' x 24'' dwelling fully destroyed</b>	<b>500</b>
76	Bush Fire	Folaha	26/06/2012 1312Hrs	Siaosi Likio (m) 52yrs	Setting Fire	Bush Fire to 6 acres, 10 hopa, 20 coconut trees	2500
77	Bush Fire	Kahoua	26/06/2012 1441Hrs	Misita Ma'u (m) 51yrs	Undetermined	Bush Fire to ¼ acre	100
78	Bush Fire	Veitongo	28/06/2012 2225Hrs	Siosaia Tupoumalohi (m) 59yrs	Undetermined	10.4m x 9.2m dwelling fully damaged	50000
79	Structural Fire	Ma'ufanga	01/07/2012 0101Hrs	Posesi 'Anau (m) 62yrs Sosaia Moala (m) 75yrs	Cooking	8.20m x 2.50m kitchen partly destroyed	50
80	Bush Fire	Tofoa	02/07/2012 1454Hrs	Tevita Taumoepeau (m) 52yrs	Undetermined	Bush Fire to 2 acres, lou'akau	250
81	Other Fire	Lapaha	06/07/2012 1708Hrs	'Enitolo Penitani (m) 35yrs Fa'one Takapu (m) 21yrs	Accidental	L8201 Partly destroyed	250

82	Structural Fire	Fanga – ‘o – Pilolevu	07/07/2012 1440Hrs	Sione Funaki (m) 47yrs	Undetermined	11m x 9m dwelling fully destroyed	10000
83	Bush Fire	Kolovai (Liukava)	08/07/2012 1203Hrs	HM King Tupou VI	Setting Fire to rubbish pile	Bush Fire to 1 acre	150
84	Bush Fire	Hu’atolitoli	09/07/2012 1430Hrs	Tikili Ma’umalanga (m) 42yrs	Undetermined	Bush Fire	350
85	Bush Fire	Fangale’ounga	11/07/2012 1446Hrs	HM King Tupou VI	Setting Fire	Bush Fire to 2 acres	1000
86	Bush Fire	Hu’atolitoli	12/07/2012 1058Hrs	Viliami Sisifa (m) 44yrs	Undetermined	Bush Fire	850
87	Bush Fire	Fangale’ounga	12/07/2012 1518Hrs	Hefa Tauelangi	Setting Fire	Bush Fire to 2 acres	1500
88	Bush Fire	Tatakamotonga	14/07/2012 1045Hrs	Mini Kanongata’a (f) 52yrs	Setting Fire	Bush Fire to 1 acre	130
89	Bush Fire	Hofoa	14/07/2012 1221Hrs	Saia Moehau (m) 64yrs	Undetermined	Bush Fire to 1 acre	300
90	Bush Fire	Niutoua	14/07/2012 1253Hrs	Pilikimi Talia’uli (m) 80yrs	Setting Fire	Bush Fire to 1 acre	150
91	Bush Fire	‘Aha	14/07/2012 1340Hrs	Matangi Lei (m) 58yrs	Setting Fire	Bush Fire to 4 acres, coconut trees	200
92	Bush Fire	Popua	14/07/2012 1459Hrs	Simione Tamale (m) 41yrs	Setting Fire	Bush Fire to 1 acre, lou’akau	1500
93	Bush Fire	Bush Fire Tofoa	14/07/2012 1630Hrs	‘Atolofi Tu’ineau (m) 46yrs	Undetermined	Bush Fire to 1 acre	200
94	Bush Fire	Hofoa Bush Fire	14/07/2012 1722Hrs	Kolonita Fineasi (f) 70yrs	Undetermined	Bush Fire to 2 acres	250
95	Bush Fire	Pangaimotu	15/07/2012 1315Hrs	Lopeti Lauti (m) 54yrs Fatai Afungia (m) 79yrs	Undermined	Bush Fire to 5 acres, coconut trees	500
96	Bush Fire	Tufumahina	17/07/2012 1255Hrs	HM King Tupou VI	Undermined	Bush Fire to 7 acres	300
97	Bush Fire	Lupepau’u Airport	18/07/2012 1527Hrs	‘Asaloni Ngaluola (m) 53yrs	Undermined	Bush Fire to 24 acres including vanilla plantation	200000
98	Bush Fire	Nualei	19/07/2012 1428Hrs	Stone Tonga (m) 30yrs Siaosi Kailahi (m) 61yrs	Setting Fire	Bush Fire	350
99	Bush Fire	Nualei	19/07/2012 1507Hrs	Nai Palu (m) 74yrs Maikolo Tonga (m) 45yrs	Undetermined	Bush Fire	500
100	Bush Fire	Fua’amotu	20/07/2012 1243Hrs	Funaki Latai (m) 55yrs	Setting Fire	Bush Fire to 4 acres	350
101	Other Fire	Ma’ufanga	21/07/2012 1217Hrs	Sotiume Taufa (f) 37yrs	Children play with matches	C11851 fully destroyed	5050
102	Bush Fire	Koulo	25/07/2012 1804Hrs	Lie Fifita (m) 62yrs Wood Kalekale (m) 44yrs Tevita Loto’aniu (m) 13yrs	Setting Fire to rubbish pile	Bush Fire to 5 acres	100
103	Structural Fire	Houmakelikao	27/07/2012 0438Hrs	Pakiti Paletu’a (f) 70yrs Mātanga Takulua (m) 45yrs	Undetermined	4.5m x 10m (1 <sup>st</sup> floor), 4.5m x 7m (2 <sup>nd</sup> floor) dwelling fully destroyed	5000
104	Structural Fire	Pahu	25/07/2012 2337Hrs	Tevita Misa Fifita (m)	Cooking	4.6m x 4m kitchen partly destroyed	500
105	Other Fire	Holonga	27/07/2012 2020Hrs	Tonga Power Limited	Accident	L7979 fully destroyed	3500
106	Other Fire	Liahona	28/07/2012 1943Hrs	Tasimonia Liuno (m) 53yrs	Car plate number C10502 crash into an electric post	Electric Post and electric wire destroyed	800
107	Structural Fire	Ma’ufanga	31/07/2012 2254Hrs	Tupou Lavulavu (m) 49yrs Viliami Tupou (m) 21yrs	Candle	8m x 6m kitchen fully destroyed	800
108	Other Fire	Ha’akame	06/08/2012 1656Hrs	Government of Tonga	Accidental	L8312 partly destroyed	5000
109	Other Fire	Nuku’alofa/Mala’e Kula Cemetery	07/08/2012 1334Hrs	Safi Hu’avi (m) 37yrs	Undetermined	Toa tree partly destroyed	50
110	Bush Fire	Pangai/Ha’apai	07/08/2012 1709Hrs	Free Wesleyan Church	Undetermined	Bush Fire to 2 acres, pata and banana trees	1000
111	False Alarm	Nuku’alofa/Tungi Colonnade	11/08/2012 1941Hrs	Lisiate Uata (m) 44yrs ‘Emeliano Takapu (m) 44	Undetermined	Fire Alarm System	50
112	False Alarm	Nuku’alofa/Tungi Colonnade	12/08/2012 0419Hrs	Undetermined	Undetermined	Fire Alarm System	50
113	Other Fire	Kolofo’ou/Holiday Base Taxi	16/08/2012 1135Hrs	Undetermined	Undetermined	T4647 Partly destroyed	3000

114	Structural Fire	Kolomotu'a	17/08/2012 29Hrs	Paula Ve'ehala (m) 50yrs Vea Havili (f) 64yrs	Undetermined	17.5m x 9.2m dwelling fully destroyed	4500
115	Structural Fire	Ma'ufanga	18/08/2012 1127Hrs	'Uluakisima Ma'u (f) 68yrs	Setting Fire	17,4m x 7.8m dwelling partly destroyed	300
116	Bush Fire	Pangai/Ha'apai	18/08/2012 1500Hrs	Sifa Hu'avi (m) 37yrs Finau Lea'aetalafo'ou (m) 59yrs	Setting Fire	Bush fire to ½ acre including pata trees, hopa trees and banana trees.	1000
117	Other Fire	Fanga 'o Pilelevu	18/08/2012 2343Hrs	Sulieti Tu'italau (f) 40yrs	Accident	L4295 partly damaged	1200
118	Bush Fire	Talasiu	20/08/2012 1256Hrs	'Ahio Falefä (m) 74yrs	Undetermined	Bush Fire to 4 acres	250
119	Bush Fire	Niutoua	21/08/2012 1400Hrs	Sione Valita (m) 54yrs Soane Hamala (m) 50yrs	Undetermined	Bush Fire to 4 acres, 8 coconut trees, 6 pata trees	750
120	Structural Fire	Ma'ufanga	22/08/2012 1917Hrs	Lelea Tupou (m) 57yrs Julian Fenech (m) 34 yrs	Gas leak from the hose of the stove	7.9m x 7.3m dwelling partly destroyed	120
121	False Alarm	Royal Palace (Nuku'alofa)	22/08/2012 1948Hrs	HM King Tupou VI	Undetermined	Fire Alarm System	80
122	Bush Fire	Kolonga	23/08/2012 1324Hrs	Sove Lauaki (m) 83yrs Tipiloma Lauaki (m) 42yrs	Undetermined	Bush Fire to 4 acres	250
123	Bush Fire	Ha'a-Vaka-'Otua	23/08/2012 1500Hrs	Ma'ake Tupou (m) 36yrs	Setting Fire	Bush Fire to 2 acres, coconut trees	250
124	Bush Fire	Pelehake	24/08/2012 1339Hrs	Tevita Kaufusi (m) 39yrs	Preparing 'Umu	Bush Fire to 4 acres, hiapo plantation	500
125	Structural Fire	Talasiu	27/08/2012 0925Hrs	'Otinili Folau (m) 47yrs	Undetermined	7m x 6.3m dwelling fully destroyed	8000
126	Bush Fire	Pangai/Ha'apai	27/08/2012 1150Hrs	Vili Tu'avao	Undetermined	Bush Fire to 16 acres, hopa, pata, kape, manioke plantation	2000
127	False Alarm	Tofoa (Vaiola Hospital)	27/08/2012 1427Hrs	Government of Tonga Ministry of Health	Undetermined	Fire Alarm System	50
128	Bush Fire	Lavengatonga	28/08/2012 1357Hrs	Mohelika Hafoka (m) 37yrs	Undetermined	Bush Fire to 3 acres, 1coconut tree. Cattle fence (40m)	300
129	Bush Fire	Tatakamotonga	28/08/2012 1529Hrs	Sione Tuiono Kamalani Siua (m) 67yrs	Setting Fire	Bush Fire to 5 acres, 15 hiapo, 8 pawpaw trees	200
130	Structural Fire	Feletoa	29/08/2012 1007Hrs	Lemeki Pouvalu (m) 27yrs	Undetermined	5.7m x 4.6m shed tool fully destroyed	500
131	Bush Fire	Pangai/ Ha'apai	29/08/2012 1048Hrs	Viliami Fä (m) 84yrs	Setting Fire	Bush Fire 30 pole, pata, breadfruit	250
132	Bush Fire	Haveluloto	01/09/2012 1224Hrs	Toli Manupule Sete Tupou (m) 30yrs	Setting Fire	Bush Fire to 4 acres coconut trees, banana trees	500
133	Bush Fire	Folaha	01/09/2012 1409Hrs	Timote Lehä Naulivou Taufu (m) 50yrs	Setting Fire	Bush Fire to 6 acres, coconut trees, banana	700
134	Bush Fire	'Utulau	01/09/2012 1412Hrs	Feleti Sevele Sinamoni Kouvaka (m) 48yrs	Setting Fire	Bush Fire	50
135	Bush Fire	Mata –Ki-'Eua	01/09/2012 1619Hrs	HM King Tupou VI Kaimana Läti (m) 50yrs	Setting Fire	Bush Fire to 2 acres	50
136	Bush Fire	Hofoa	02/09/2012 1604Hrs	Mataele Moala	Undetermined	Bush Fire, banana, coconut trees bamboo of Ocean of Light	900
137	Bush Fire	Ha'utu	03/09/2012 1115Hrs	Leuma Finau (m) 65yrs	Setting Fire	Bush Fire to 5 acres, tapioca plantation	2500
138	Bush Fire	Hofoa	03/09/2012 1852Hrs	Sione Palu (m) 63yrs	Setting Fire	Bush Fire	100
138	Bush Fire	Mataika /Vava'u	04/09/2012 1345Hrs	Maile Kokohu (m) 64yrs	Undetermined	Bush Fire to 2 acres, lou'akau, hopa,, kava plantation 1acre	5000
140	Other Fire	Neiafu Tahii	05/09/2012 2221Hrs	Grey Carlson (m) 54yrs Brenda Manmancau (f) 49yrs	Undetermined	Fotulona Tree	50
141	Structural Fire	Lavengamalie	07/09/2012 2050Hrs	Po'uli Vaki (m) 60yrs Sangster Saulala (m)	Undetermined	16m x 10.6m, 15.3m x 8m 2 dwelling fully	116500



				42yrs Lose Latapu (f) 62yrs		destroyed 8.5m x 4.6m dwelling partly destroyed	
142	Other Fire	Mataika	08/09/2012 1924Hrs	Vainikolo Lät:u Ikuna 'Alofaki (m) 25yrs	Setting Fire	Vavae tree	80
143	Structural Fire	Nukunuku	09/09/2012 0705Hrs	Tapaita Moeaki (f) 86yrs	Undetermined	9.2m x 7.6m dwelling fully destroyed	70000
144	Structural Fire	Longolongo	20/09/2012 0210Hrs	Pele Moimoi Tenisi Ma'afu (f) 37yrs Siuva Sivanathan (m) 60yrs (Indian)	Undetermined	15.3m x 5.3m dwelling fully destroyed	30000
145	False Alarm	Nuku'alofa/Palasi Fakatu'i	20/09/2012 0726Hrs	HM King Tupou VI	Undetermined	Fire Alarm System	30
146	Other Fire	Vaipua /Vava'u	20/09/2012 1954Hrs	Government of Tonga	Undetermined	Kaho tree, water pipe line	100
147	False Alarm	Queen Salote wharf	20/09/2012 2100Hrs	Government of Tonga Tonga Defense Services	Rubbish Fire	Rubbish	
148	Structural Fire	Tofoa	21/09/2012 0920Hrs	'Aisea Tu'itupou Manoa Tu'itupou (m) 56yrs	Undetermined	5.20m x 6.20m dwelling fully destroyed	4500
149	Structural Fire	Houmelei/Vava'u	22/09/2012 1448Hrs	Sione Fuataimi (m) 78yrs	Undetermined	9.1m x 3.1m kitchen fully destroyed	300
150	Other Fire	Haveluloto	26/09/2012 1908Hrs	Tonga Power Limited	Heavy raining	Electric post to 1.5", electric wire to 1m	50
151	Other Fire	Feletoa	28/09/2012 1428Hrs	Salesi Tangataevaha	Setting Fire to rubbish pile	Pua Tonga tree partly damage	50
152	False Alarm	Royal Palace (Nuku'alofa)	28/09/2012 1523Hrs	HM King Tupou VI	Undetermined	Fire Alarm System	40
153	Bush Fire	Masilamea	09/10/2012 1355hrs	Palatoni Tu'ungafasi (m) 75yrr Sifa Tu'ungafasi (m) 37yrs	Setting Fire	Bush Fire to 4 acres, hopa tree	300
154	Rubbish Fire	Ma'ufanga	12/10/2012 1431hrs	Viliami Falekaono (m) 54yrs	Setting Fire on rubbish pile	Rubbish Fire to ¼ acre	70
155	Special Service	Kolomotu'a (Sipu Rd.)	12/10/2012 1729hrs	T4944 Filimone Fifita (m) 69yrs Driver: Lofakaitamaki Vatikani (m) 40yrs C15132 Losaline Lauhingoa (f) 29yrs Driver: Losaline Lauhingoa (f) 29yrs	Careless driving	T4944 partly damaged C15132 partly damaged <i>*One (1) decease involved in the incident</i>	3000
156	Bush Fire	Lapaha	13/10/2012 1121hrs	Government of Tonga G.P.S Lapaha	Undetermined	Bush Fire to 1acre	50
157	Structural Fire	Ma'ufanga	14/10/2012 0328hrs	Tekina 'Amanaki (m) 48 yrs Toni Fonua (m) 33yrs	Undetermined	24m x 13.6m, 9.8m x 4.5m dwelling fully destroyed	1.40000 15000
158	False Alarm	Nuku'alofa	19/10/2012 0905hrs	Carl Sanft (m) 55yrs	Undetermined	Smoke Detector	50
159	Bush Fire	Haveluloto	19/10/2012 1110hrs	Hon. Fielakepa Government of Tonga	Setting Fire to rubbish pile	Bush Fire to ¼ acre	50
160	Other Fire	Tu'atakilangi/ Hihifo Rd.	19/10/2012 1447hrs	Tonga Water Board	Hose leak from the diesel tank	Excavator partly damaged	5000
161	Bush Fire	Tufumahina	20/10/2012 1610hrs	Prince Tupouto'a Q.S.C	Undetermined	Bush fire to 2 acres, hopa, banana and pata tree	500
162	Bush Fire	Ha'ateiho	23/10/2012 1443hrs	Tonga College 'Atele	Undermined	Bush Fire to ½ acre	300
163	Structural Fire	Houma	23/10/2012 1552hrs	Sione L Mafi (m) 54yrs Viliami Tuinauvai (m) 73 yrs Saia Katoa (m) 28yrs	Mosquito coil	10.7 x 8m dwelling fully destroyed 2.10.5m x 7.4m dwelling fully destroyed	1.40000 45000
164	Other Fire	Mangia	23/10/2012 1656hrs	Sina Guo (f) 32yrs Tu'iniua Palefau (m)	Undetermined	J3755 partly damaged	100

				67yrs			
165	Bush Fire	Tufumahina	24/10/2012 2142hrs	HM King Tupou VI Lopeti Schaumkel (m) 62yrs	Setting Fire	Bush Fire to 14acres	500
166	Bush Fire	Vaotu'u	30/10/2012 1907hrs	FWC Vaotu'u Minoneti 'Aukafolau (m) 65yrs	Setting Fire	Bush Fire to 2 acres, ¼ Pain tree plantation, ½ acre tapioca plantation	1500
167	Bush Fire	Vaotu'u	01/11/2012 1249hrs	Sione Tuionuku (m) 40yrs Tevita Teumohenga 26yrs	Undetermined	Bush Fire to 4acres, coconut trees, breadfruit	650
168	Bush Fire	Kahoua	1/11/2012 1254hrs	Lisita Ma'u(m) 51yrs	Setting Fire	Bush Fire to 11/2 acre, coconut trees, pata tree	500
169	Structural Fire	Fasi mo e Afi	5/11/2012 0524hrs	Sione Tu'ilotolava(m) 49yrs Steven Wang(m) 28yrs	Undetermined	14m x 7m restaurant partly damaged	3000
170	Bush Fire	Kanokupolu	5/11/2012 1216hrs	Taniela Fie'eiki(m) 42yrs	Undetermined	Bush Fire to 1acre,coconut tree, 1 mango tree	250
171	Other Fire	Taufa'ahau Road Mailletaha	6/11/2012 0749hrs	Paula Tu'itupou(m) 39yrs Driver: Fiona Pahulu(f) 32yrs	Undetermined	L11942 partly damaged	300
172	Structural Fire	Kolonga	8/11/2012 1615hrs	Falavalu Topani(m) 47yrs	Undetermined	11.65m x7.37m dwelling fully destroyed	28000
173	Structural Fire	Pangai/Ha'apai	9/11/2012 1152hrs	Sione Tongia Uaisele Fono(m) 28yrs	Undetermined	27' x 22' fale nofo'anga maumau kotoa	9500
174	Other Fire	Sopu/Vuna Road	11/11/2012 0314hrs	Tonga Power Limited	Vehicle Accident	L14661 partly damaged, 1 electrical pole	40
175	Bush Fire	Puke	12/11/12 1209hrs	Sione Nonu(m) 33yrs Taunaholo Fakatava(m) 61yrs	Setting Fire to rubbish pile	Bush Fire	50
176	Structural Fire	Houma	12/11/12 1616hrs	'Inoke 'Ete'aki(m) 42yrs	Undetermined	10.40m x10.40m dwelling fully destroyed	42000
177	False Alarm	Nuku'alofa TDB	13/11/2012 0836hrs	Government of Tonga TDB	Undetermined	Fire Alarm System	60
178	Structural Fire	Sopu	15/11/2012 0235hrs	Lualala Lasike Seli Matakai(m) 44yrs	Undetermined	11.50m x 7.40m dwelling fully destroyed	30000
179	Bush Fire	Malapo	17/11/2012 1434hrs	To'ofoho Loketi(m) 78yrs	Setting Fire	Bush Fire to 6acres, 5 coconut trees	500
180	Structural Fire	Puke	17/11/2012 1758hrs	'Aholoka Tupou(m)43	Gas Stove	12.5m x11.8m dwelling fully destroyed	70000
181	Rubbish Fire	Ma'ufanga	18/11/2012 1941hrs	Maliepo Toma Moeaki(m) 40yrs	Undetermined	Rubbish Fire	50
182	Bush Fire	Longoteme	19/11/2012 1655hrs	Tivinia Misiloi(f) 74yrs	Undetermined	Bush Fire to 4acres	400
183	Bush Fire	Puke	21/11/2012 1258hrs	Owen Moala(m) 30yrs	Setting Fire	Bush Fire to 8acres	500
184	Special Services	Fua'amotu	22/11/2012 0946hrs	Ross Beljevich	Misused of Methylated Spirit	Falesima Laki MESUI (f) 37yrs minor burn to body	50
185	Bush Fire	Nualei	26/11/2012 1614hrs	Siaosi Puloka(m) 72yrs	Setting Fire	Bush Fire to 1acre	80
186	Structural Fire	Pelehake	27/11/2012 2340hrs	Sepeti Finau(m) 83 yrs	Candle	1 bedroom damaged	300
187	Other Fire	Kolofo'ou	28/11/2012 1316hrs	Tevita Soakai(m) 52yrs	Undetermined	Tava tree	100
188	Structural Fire	Houma	29/11/2012 0900hrs	Tevita Mafi(m)78yrs	Undetermined	Dwelling fully destroyed	85000
189	Bush Fire	Pelehake	30/11/2012 1728hrs	Tevita Siale(m) 41yrs	Undetermined	Cassava plantation	350

190	Structural Fire	Fasi	01/12/2012 0117hrs	Siosifa F Latu(m) 52yrs	Mosquito coils	3.8m x2.9m dwelling fully destroyed	1000
191	Bush Fire	Kolomotu'a	02/12/2012 0553hrs	Kuiniva Halou(m)47yrs	Undetermined	Grass Fire	30
192	Bush Fire	Nualei	01/12/2012 1557hrs	Bahai Faith	Undetermined	Bush Fire to 16 acres	200
193	Bush Fire	Nualei	09/12/2012 1314hrs	Meliame Lotaki(f)64yrs	Preparing 'Umu	Old bus, cassava , hopa plantation	2000
194	Bush Fire	'Ahau	3/12/2012 1250hrs	Paula Ma'u(m)45yrs Tilila Fifita(f) 53yrs	Setting Fire	Bush Fire to 3 acres of cassava plantation and coconut trees	1000
195	Bush Fire	Nukunuku	3/12/2012 0958hrs	Lesoni 'Oliv(m)56yrs	Setting Fire	Set for plantation	20
196	Bush Fire	Vaini	4/12/2012 1657hrs	Chruch of Tonga	Undetermined	Bush Fire to 4 meter <sup>2</sup>	40
197	Bush Fire	Ha'akame	4/12/12 1538hrs	Molonai Finau(m)64yrs Siosaia Mateaki	Under investigation	Bush Fire to 5 acres and manioke plantation	1500
198	Rubbish Fire	Halaleva	5/12/2012 0846hrs	Siasi 'Ingilani Halaleva	Setting Fire	Rubbish Fire	80
199	Bush Fire	Pelehake	5/12/2012 1421hrs	Viliami Hafoka(m)44yrs	Undetermined	Bush Fire to 6 acres	200
200	Bush Fire	Tatakamotonga	5/12/2012 1658hrs	'Alipate Kaiongo(m)32yrs	Undetermined	Bush Fire to 4 acres	180
201	Structural Fire	Houmakelikao	5/12/2012 1201hrs	Mosese Tau'uta Sopeta Vaiomo'unga(m)31yrs	Setting Fire	Kitchen fully destroyed	1500
202	Structural Fire	Havelu	6/12/2012 0807hrs	Loise Vea(f)71yrs Saia Vea(m)40yrs	Undetermined	7.7m x 6.2m dwelling fully destroyed	8500
203	Other Fire	Fasi	6/12/2012 1245hrs	'Ilaisa Young(f) 67yrs	Setting Fire to rubbish pile	Coconut tree	50
204	Rubbish Fire	Fanga	7/12/2012 1727hrs	Rodney Tu'inukuafe(m) 47yrs	Setting Fire to rubbish pile	Lo'akau tree	150
205	Rubbish Fire	'Anana	10/12/2012 1912hrs	Sosaia Finau(m) 60yrs	Setting Fire to rubbish pile	Rubbish Fire	30
206	Other Fire	Makaunga	12/12/2012 1910hrs	Ma'u Fonokalafi(m) 79yrs	Setting Fire to rubbish pile	Toa tree	50
207	Other Fire	Houmakelikao	12/12/2012 1920hrs	Afred Soakai(m) 49yrs	Undetermined	Touhuni tree	50
208	Other Fire	Longoteme	13/12/2012 0807hrs	Roman Catholic Longoteme	Undetermined	1 Vehicle fully destroyed	1000
209	Bush Fire	Fo'ui	13/12/2012 1338hrs	Siaola Fifita(m)63yrs	Undetermined	Tapioca plantation, coconut tree	500
210	Bush Fire	Tatakamotonga	13/12/2012 1430hrs	Telu Ha'angana(m)61yrs Frank Oscar(m)47yrs	Undetermined	Cassva plantation and coconut trees	250
211	Rubbish Fire	Fangaloto	13/12/2012 1612hrs	Ane Le'ota(f) 74yrs	Undetermined	Bush Fire	70
212	Rubbish Fire	Lapaha	13/12/2012 1650hrs	Sonatane Takulua(m)40yrs	Undetermined	Rubbish	50
213	Other Fire	Popua	13/12/2012 2143hrs	Lakalaka Uele(m)40yrs	Undetermined	Vehicle L11691 partly destroyed	3000
214	Other Fire	Fo'ui	14/12/2012 0917hrs	Fo'ui Town Officer	Setting Fire to rubbish pile	Feta'u tree	50
215	Bush Fire	Havelu	20/12/2012 1308hrs	Kalini Kei(m)60yrs Maleponi Teutau(f)38yrs	Undetermined	Coconut tree	100
216	Structural Fire	Ngele'ia	20/12/2012 1337hrs	Fotu Fisi'iahi(m)49yrs Siua Havea(m)59yrs	Electricity	Ceiling and electric wire	2500
217	Other Fire	Holonga	19/12/2012 0513hrs	'Ilaisa Teaupa(m)82yrs	Undetermined	Toa tree	50
218	Bush Fire	Tatakamotonga	19/12/2012 1145hrs	Sela Ha'angana(f) 81yrs Mohe'ofa 'Osika(f)49yrs	Undetermined	Bush Fire	60
219	Other Fire	'Anana	19/12/2012 1300hrs	Savelio Vakaahi(m) 73yrs	Undetermined	Van in Fire	700
220	Bush Fire	Kanokupolu	19/12/2012 1624hrs	Kelekele 'Akau'ola(m) 64yrs	Undetermined	Starvation	150
221	Bush Fire	Houmakelikao	19/12/2012 1655hrs	Hon.Fakafanua	Undetermined	Grass Fire	40
222	Structural Fire	Ta'anea Vava'u	22/12/2012 0415hrs	Tevita Tameifuna(m) 85yrs	Undetermined	Dwelling fully destroyed and all the	4000

						content	
223	False Alarm	Hofoa	24/11/2012 2055hrs	Uasi Halasima(m) Hofoa	-	-	50
224	False Alarm	Tofoa	29/11/2012 0903hrs	Mumui Tatola(m)85yrs	Change battery for smoke alarm	Smoke Alarm	50
225	False Alarm	Royal Palace	29/11/2012 1610hrs	HM King Tupou VI	Multifunction	Fire Alarm System	70
226	False Alarm	Veitongo	19/12/2012 1821hrs	Lunaeva Malapo	Smoke from engine while refill at Gas Station	Vehicle	70
227	False Alarm	Kolofo'ou	22/12/2012 1050hrs	Westpac Bank of Tonga	Technical problem	Fire Alarm System	50
228	Other Fire (Vehicle)	Ma'ufanga	26/12/2012 1144hrs	'Ana Tutoe(f) 47yrs	Engine problem	Vehicle L12351 partly destroyed	100
229	Bush Fire	Lifuka Ha'apai	24/12/2012 1210hrs	Ministry of Education	Setting fire to rubbish pile	Vegetables	200
230	Structural Fire	Niutoua	27/12/2012 2134hrs	Toetu'u Niutupuua(m) 80yrs	Undetermined	Dwelling and content fully destroyed	4500
231	False Alarm	Tofoa	30/12/2012 0525hrs	Mumui Tatola(m)85yrs	Technical problem to the smoke alarm	Smoke Alarm	70
232	Structural Fire	Vaini	31/12/2012 2027hrs	Petuli Halatokoua(f) 43yrs	Undetermined	2 Televisions, sofa	1500
233	Other Fire (Vehicle)	Ma'ufanga	31/12/2012 1658hrs	'Ifalemi Ma'u(m)45yrs	Undetermined	1 Wreck Vehicle partly destroyed	400
234	Other Fire (Tree)	Ha'ateiho	31/12/2012 2027hrs	Hon. Tu'iha'ateiho(m)51yrs	Undetermined	Toa tree	50

# Tohi ki he 'Ene 'Afio

1<sup>st</sup> Siulai, 2013

Ki He 'Ene 'Afio  
King Tupou VI  
'Ofisi Palasi  
**NUKU'ALOFA**

**'E Ho'o 'Afio,**

Fakatatau ki he kupu 5 'o e Konisitutone 'o Tonga, 'oku fiema'u ai ki he Minisitā Polisi kene 'oatu ha fakamatala fakata'u ki he 'Ene 'Afio 'o felave'i mo e ngaahi ngäue 'a e Potungäue Polisi, Pilisone & Tämäte Afi na'e fakahoko 'i he ta'u kuo hili.

'Oku 'iloa 'a e tohi ni ko e Fakamatala Fakata'u 'a e Potungäue Tämäte Afi 'a Tonga 'aia 'oku fakamatala fakaikiiki ai ki he ngaahi ngäue na'e fakahoko 'e he Potungäue Tämäte Afi.

'Oku ou fiefia pea mo faka'apa'apa lahi ki he 'Afiona kae 'oatu 'a e Fakamatala Fakata'u 'a e Potungäue Tämäte Afi ki he ta'u 2012.

.....  
Hon. Siosifa Tu'utafaiva  
**'Eiki Minisitā Polisi, Pilisone & Tämäte Afi**

# Tohi ki he Minisitä

1<sup>st</sup> Siulai 2013

Hon. Siosifa Tu'utafaiva  
'Eiki Minisitä Polisi, Pilisone & Tämäte Afi

**'Eiki Minisitä Polisi, Pilisone & Tämäte Afi,**

'Okú te längilangi'ia mo'oni ke 'oatu 'a e fakamatala fakata'u 'a e Potungäue Tämäte Afi 'a Tongá ki he ta'u 2012. Ko e lipooti ni 'oku ne 'oatu ai 'a e ngaahi ngäue na'e fakahoko ke a'usia ai 'a e taumu'a ngäue 'o kamata mei he vaha'a taimi 'o e 'aho 1<sup>st</sup> Sanuali 'o ngata ki he 'aho 31<sup>st</sup> Tisema 2012.

Faka'apa'apa atu,

Lofia-'I-Vailahi Heimuli  
**Komisiona Tämäte Afi**

# Fakahokohoko

	Peesi
Tohi ki he 'Ene 'Afi	37
Tohi ki he 'Eiki Minisitä Polisi, Pilisone & Tämäte Afi	38
'Apitanga Tämäte Afi	40
Fakamatala Ngäue	41
Fa'unga 'o e Potungäue Tämäte Afi	42
Fakahoko Ngäue	44
Ngäue Va'a Ngäue	50
Ngäue Fakamalu'i ki he Kömiuniti	55
Palopalema Ne Uesia e Ngäue'anga	58
Pa'anga 'Esitimefi	59
Fakama'opo'opo	64
Fakalahi Fakaikiiki	65

# 'Apitanga Tämäte Afi

## Tongatapu

1. **'Ulu'i 'Apitanga Tämäte Afi**  
'Api Ako Polisi  
Po Box 827, Longolongo  
Nuku'alofa  
Ph (Control Room): (676) 23-144 / (676) 881 9012  
Ph (Fika Fakatu'utamaki): 999  
Fax: (676) 28-738  
Email: [fireservice@kalianet.to](mailto:fireservice@kalianet.to)
2. **'Apitanga Tämäte Afi Lapaha (Vahenga Hahake)**  
Lapaha, Tongatapu  
Ph (Control Room): (676) 31-222 / (676) 881 9014  
Ph (Fika Fakatu'utamaki): 927  
Fax: (676) 31-222
3. **'Apitanga Tämäte Afi (Vahenga Hihifo )**  
Nukunuku, Tongatapu  
Ph (Control Room): (676) 41-222 / (676) 881 9015  
Ph (Fika Fakatu'utamaki): 928  
Fax: (676) 41-222

## Vava'u

1. **'Apitanga Tämäte Afi Neiafu**  
Neiafu, Vava'u  
Ph (Control Room): (676) 70-680 / (676) 867 0699  
Ph (Fika Fakatu'utamaki): 999  
Fax: (676) 70-680

## Ha'apai

1. **'Apitanga Tämäte Afi Pangai**  
Pangai, Ha'apai  
Ph (Control Room): (676) 60-771 / (676) 866 0771  
Ph (Fika Fakatu'utamaki): 999  
Fax: (676) 60-680

## 'Eua

1. **'Apitanga Tämäte Afi Angahä**  
Angahä, 'Eua  
Ph (Control Room): (676) 50-561 / (676) 865 0561  
Ph (Fika Fakatu'utamakai): 999 or 50-313  
Fax: (676) 50-561



# Fakamatala Ngäue

## KO 'EMAU VĪSONE

### *Ha Sosaiete 'oku malu ange mo fiefia*

Ko 'emau vīsone ke hoko 'a e sosaiete ko ha sosaiete 'oku malu mo fiefia. Te mau tokoni ki he me'a ni 'aki 'emau ngäue fakataha pea mo e sosaiete ke fakasi'isi'i hifo 'a e mate, lavea, maumau ki he koloa pea mo e 'ataakai tupu mei he ngäue 'a e afi mo e naahi tu'utämaki kehe. Te mau ngäue'aki 'a 'emau tauhi vä fengäue'aki fakataha pea mo e kakai ke tokoni ke fakautuutu 'a e ngäue fetokoni'aki 'a e komiuniti 'oku mau fakahoko fatongia ki ai.

## KO 'EMAU MISIONA

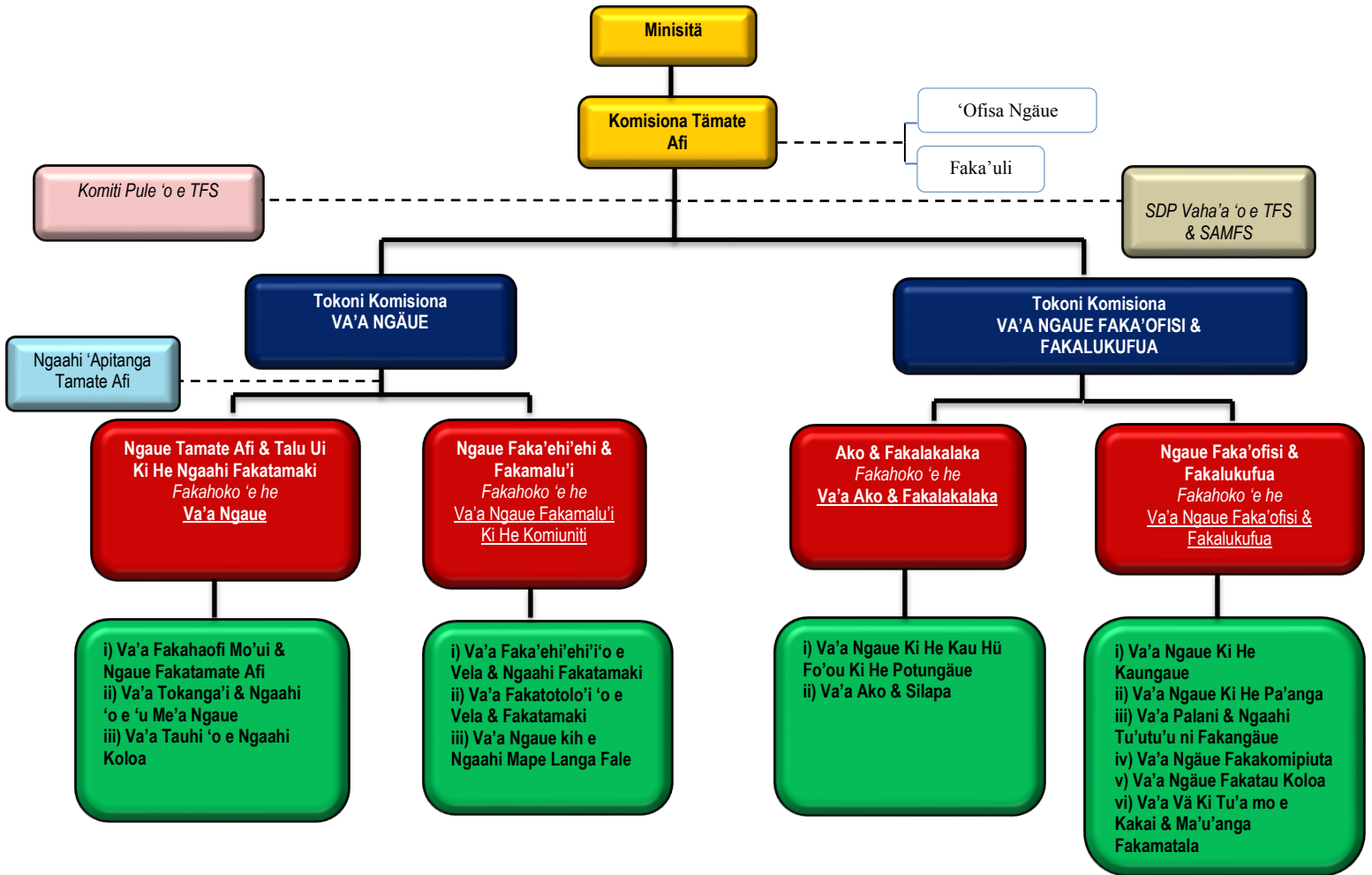
### *Ke fakahoko fatongia ki he kakai 'o e Fonua*

Te mau a'usia 'emau vīsone 'aki hono fakakaukau'i ha Potungäue TamateAfi 'oku fakaonopooni 'oku fengäue'aki fakataha pea mo e kakai 'o e fonua, ngaahi pisinisi pea mo e ngaahi kautaha kehe ke faksi'isi'i hifo 'a e fakatu'utamaki 'oku tupu mei he afi pea mo e ngaahi fakatu'utamaki kehe. Te mau ngäue vave 'aupito pea ke ma'u ha ola ki ha ui tokoni ki ha ngaahi me'a fekau'aki pea mo hono tamate'i ha 'afi pea mo ha ngaahi fakatu'utamaki kehe, pea kapau 'e fiema'u te mau fai ha faka'uto'uta fakapotopoto ke fakahaofi 'a e mo'ui, malu'i 'a e koloa, fakahoko ha ngaahi fatongia fakaetangata kehe pea mo malu'i 'a e 'ataakai 'i he taimi 'oku fiema'u ai kimautolu 'e he komiuniti.

## TAUMU'A NGÄUE FAKALUKUFUA

- Ke faka'ehi'ehi'i 'o e fakatu'utamaki 'oku tupu mei he afi pea mo hono langa hake mo e fengäue'aki ki hono malu'i 'o e mo'ui mei he vela.
- Ke tamate'i mo hono fakangata 'o e vela.
- Ke fakahoko pe 'ave 'a e fiema'u tokoni 'i he taimi fakatu'utamaki ki he mo'ui mo e koloa 'a e kakai tukukehe ange mei he vela.
- Ke fakahoko e ngäue Tämäte Afi 'i he founga lelei mo si'i e fakamole.
- Ke fakalalaka'i hono pule'i 'o e me'angäue.
- Ke palani'i mo fakalalaka'i 'a e ngäue Faka-Tämäte Afi 'i Tonga.
- Ke hoko koha tokotaha ngäue fakapule'anga lelei.
- Ke fakapapau'i ko e ngaahi taumu'a ngäue 'oku a'usia.

# Fa'unga 'o e Potungäue Tämäte Afi



Ko e fa'unga 'o e Potungäue Tämäte Afi 'oku fakatefito ia 'i he ngaahi fatongia 'oku ne fakahoko, pea pehë ki hono vahevahe 'o e kau ngäue ki he ngaahi 'Apitanga Tämäte Afi moe ngaahi Va'a Ngäue. 'I he 'aho 29<sup>th</sup> Sune 2012 na'e tali ai 'e he Kapineti 'o 'Ene 'Afio (CD fika 580) 'a e fakalelei ki he lakanga mo e fa'unga vahenga 'a e Potungäue Tämäte Afi 'a Tonga.

Lakanga	Tefito'i Fatongia
'Eiki Ministä Polisi, Pilisone & Tämäte Afi	Pule Fakalukufua
Komisiona Tämäte Afi	Tokanga'i 'a hono fakalele 'a e ngaue'anga faka'aho ke pau mo malava lelei 'a e ngaue tämäte afi.
Tokoni Komisiona Tämäte Afi	Tokanga'i 'a hono fakalele 'o e ngaue faka'aho mo e ngaahi ngaue fakatämäte afi
'Ofisa Pule Tämäte Afi Ma'olunga	'Ofisa Taki 'i he Ngaahi Va'a Ngäue
Tokoni 'Ofisa Pule Tämäte Afi Ma'olunga	'Ofisa Taki 'i he Ngaahi 'Apitanga Tämäte Afi & Va'a liki
'Ofisa Tämäte Afi	Tokoni ki hono tokanga'i 'o e Va'a Ngaue & Ngaahi 'Apitanga Tämäte Afi
Tämäte Afi Ma'olunga, Taki Tämäte Afi Ma'olunga, Taki Tämäte Afi & Tämäte Afi, Tämäte Afi Akoako	Tämäte Afi mo fakahoko 'a e ngaahi ngaue faka'aho mo e ngaue fakatämäte afi



*Ko hono Huufi 'a e Teunga Fo'ou (13<sup>th</sup> Tisema 2012)  
'e he 'Eiki Palemī 'o Tonga, Lord Tu'ivakanö*



*'Eiki Ministä Polisi, Pilisone & Tämäte Afi  
Hon. Siosifa Tu'utafaiva mo e Kau Ngäue Tämäte Afi*

# Fakahoko Ngäue

## Pule'i

Ko **Hon. Lisiate 'Aloveitā 'Akolo** na'e 'Eiki Ministā Polisi, Pilisone & Tämäte Afi 'i he kamata mai 'o e ta'u 2012. Lolotonga 'a e ta'u na'e fakahoko ai 'e he Pule'anga ha fokotu'utu'u mo ha fehikitaki ki he ni'ihi 'o 'ene kau Hou'eiki Minisitā. 'I Mē 'o e ta'u 2012 na'e kamata ngäue ai 'a **Hon. Sunia Fili** ki hono lakanga fo'ou ko e Minisitā Polisi, Pilisone & Tämäte Afi.

Kaikehe, lolotonga 'a e ta'u na'e fakahoko ai 'e he Pule'anga ha toe fokotu'utu'u fo'ou ki he Hou'eiki Minisitā mo e ngaahi Potungäue 'oku nau tokanga'i. Na'e foki leva 'a e Potungäue Polisi, Pilisone & Tämäte Afi 'a Tonga 'o le'ole'o mo nofo 'i he malumalu 'o e 'Eiki Palemia 'o Tonga, Lord Tu'ivakanö 'o a'u ki he faka'osinga 'o e ta'u 2012.

Ko Komisiona Tämäte Afi, L. Heimuli ko e Pule hono Uá ia na'á ne tokanga'i 'a hono fakahoko mo fakalele 'o e ngaahi ngäue faka'ahó lolotonga 'a e ta'u.

## Tokolahi e Kau Ngäue Tämäte Afi (mei 'aho 31<sup>st</sup> Tisema 2012)

S/No.	LAKANGA	Nuku'alofa	Vava'u	Ha'apai	'Eua	Lapaha	Nukunuku	TOKOLAHI
1	Komisiona Tämäte Afi	1	-	-	-	-	-	1
2	Tokoni Komisiona Tämäte Afi	2	-	-	-	-	-	2
3	'Ofisa Pule Tämäte Afi Ma'olunga	4	-	-	-	-	-	4
4	Tokoni 'Ofisa Pule Tämäte Afi Ma'olunga	2	2	1	1	1	1	8
5	'Ofisa Tämäte Afi	6	1	1	-	-	1	9
6	Tämäte Afi Ma'olunga	7	1	-	1	2	-	11
7	Taki Tämäte Afi Ma'olunga	4	2	2	1	-	1	10
8	Taki Tämäte Afi	2	1	1	2	4	1	11
9	Tämäte Afi	14	2	3	3	3	6	31
10	Tämäte Afi Akoako	4	1	-	-	-	1	6
11	Kalake	1	-	-	-	-	-	1
	<b>TOTAL</b>	<b>47</b>	<b>10</b>	<b>8</b>	<b>8</b>	<b>10</b>	<b>11</b>	<b>94</b>

## Me'alele Ngäue

S/No	Loli Tämäte Afi & Me'alele Faka-Potungäue	Nuku'alofa	Vava'u	Ha'apai	'Eua	Lapaha	Nukunuku	Lahi 'o e Loli Tämäte Afi & Me'alele Faka- Potungäue
1	Loli Tämäte Afi (Hino)	1	2	1	1	1	1	7
2	Loli Tämäte Afi (Toyota)	-	-	-	1	1	-	2
3	Loli Tangikē Vai	2	1	2	-	-	1	6
4	Loli Tämäte Afi (International)	1	-	-	-	-	-	1
5	Skyjet	1	-	-	-	-	-	1

6	Me'alele Fakapotugae	3	2	1	1	1	1	9
7	Palau	1	-	-	-	-	-	1
<b>TOTAL</b>		<b>9</b>	<b>5</b>	<b>4</b>	<b>2</b>	<b>3</b>	<b>3</b>	<b>27</b>

## Fakahihiki

Na'e tali 'e he Kapinetai 'o 'Ene 'Afio (CD fika 581, 'aho 29<sup>th</sup> Sune 2013) 'a e ngaahi fakahihiki ko 'eni fakatatau ki he fakalelei lakanga mo e fa'unga vahenga 'o e Potungäue Tämata Afi 'o kamata lau mei he 'aho 1<sup>st</sup> Siulai 2013.

### Ki He Lakanga ko e Tokoni Komisiona Tämata Afi

1. 'Ofisa Pule Tämata Afi Ma'olunga 3. TU'IMALAMAKA Fakakonakai Viliami

### Ki He Lakanga ko e 'Ofisa Pule Tämata Afi Ma'olunga

1. Tokoni 'Ofisa Pule Tämata Afi Ma'olunga 4. FOLAU 'Inoke
2. Tokoni 'Ofisa Pule Tämata Afi Ma'olunga 5. 'OLIE. Tongamana
3. Tokoni 'Ofisa Pule Tämata Afi Ma'olunga 6. KAUVAKA. Ika Sinamoni
4. Tokoni 'Ofisa Pule Tämata Afi Ma'olunga 7. FINEANGANOFU. Filisonu'u

### Ki He Lakanga ko e Tokoni 'Ofisa Pule Tämata Afi Ma'olunga

1. 'Ofisa Tämata Afi 8. LATU Tu'inukuafe Seliuti
2. 'Ofisa Tämata Afi 9. MAFI Malakai
3. 'Ofisa Tämata Afi 10. MA'U Huni Viliami
4. 'Ofisa Tämata Afi 11. VA'ENUKU Moeakiola Tevita
5. 'Ofisa Tämata Afi 12. MAFI Samiu
6. 'Ofisa Tämata Afi 13. 'AHOFONO Fakaului
7. 'Ofisa Tämata Afi 14. LOLO Lolohea Vili
8. 'Ofisa Tämata Afi 15. TU'IPULOTU Owen

### Ki He Lakanga ko e 'Ofisa Tämata Afi

1. Tämata Afi Ma'olunga 16. LAVAKA Finau Sione
2. Tämata Afi Ma'olunga 17. VAKA. Haileni
3. Tämata Afi Ma'olunga 18. TANGINOA Viliami
4. Tämata Afi Ma'olunga 19. HOPOI Kaliopasi
5. Tämata Afi Ma'olunga 20. TU'ITUPOU Paula
6. Tämata Afi Ma'olunga 21. VAKA Moheloa Siosaia
7. Tämata Afi Ma'olunga 22. IKA Tohi Fe'iloaki
8. Tämata Afi Ma'olunga 23. 'ESEI 'Amanaki
9. Tämata Afi Ma'olunga 24. NAITOKO Fotu'aika

### Ki He Lakanga ko e Tämata Afi Ma'olunga

1. Taki Tämata Afi Ma'olunga 26. VEIKOSO Uesile Sione
2. Taki Tämata Afi Ma'olunga 27. POLO Kafohiva Paula
3. Taki Tämata Afi Ma'olunga 28. TU'UTAFIIVA Paula
4. Taki Tämata Afi Ma'olunga 29. VAIHU Sililo Sinele
5. Taki Tämata Afi Ma'olunga 30. FINAU Mauikisikisi Kelekolio
6. Taki Tämata Afi Ma'olunga 31. BAKER Tofua Charles Christopher
7. Taki Tämata Afi Ma'olunga 32. KALONI Maamaloa Sione
8. Taki Tämata Afi Ma'olunga 33. VAITAKI King Winston
9. Taki Tämata Afi Ma'olunga 34. LIMONI Talau 'o Laumanu
10. Taki Tämata Afi Ma'olunga 35. FAKA'I Lisimoa

### Ki He Lakanga ko e Taki Tämäte Afi Ma'olunga

1. Taki Tämäte Afi 36. LAMA Lolo
2. Taki Tämäte Afi 37. LATU Maloni Fatai Hosea
3. Taki Tämäte Afi 38. VEA Lotu-He-Mateaki Sydney
4. Taki Tämäte Afi 39. KAVA Lapiuini Sione
5. Taki Tämäte Afi 40. TU'ITUPOU Maikolo
6. Taki Tämäte Afi 41. PAONGO Mafoa'aeata 'Efolosia Sekope
7. Taki Tämäte Afi 42. SIKALU Lotu-He-Mavae
8. Taki Tämäte Afi 43. FAKATOKA Tiara Tony Mo'ui-'oe-Nasili Timote
9. Taki Tämäte Afi 44. TEUMOHENGA Tavake 'Okani Taniela
10. Taki Tämäte Afi 45. TAUPAKI Falehau-'o Pasivulangi

### Ki He Lakanga ko e Taki Tämäte Afi

1. Tämäte Afi 46. KATOA Sikalu Tevita
2. Tämäte Afi 47. FETU'U Piulitei
3. Tämäte Afi 48. MASALU Mafile'o Vilisoni
4. Tämäte Afi 49. VAHE Toni
5. Tämäte Afi 50. LAUTAIMI Feke'ila Sione
6. Tämäte Afi 51. LANGI Senituli
7. Tämäte Afi 52. FUNGALEI 'Alovivili
8. Tämäte Afi 53. TAUELANGI Ma'asi
9. Tämäte Afi 54. VEA Tonga 'a Pulonga
10. Tämäte Afi 55. POLO 'Afa
11. Tämäte Afi 56. FIFITA 'Akauola Penisimani

### **Fakapapau'i ki he Lakanga Tämäte Afi**

Na'e fakapapau'i mo fokotu'u (CD fika 117) 'a e toko Ono (6) ki he Lakanga ko e Tamäte Afi hili 'a e kakato 'a e ta'u 'e 2 'enau fakahoko fatongia 'i he lakanga ko e Tamate Afi Akoako fakatatau ki he tu'utu'u ni ngäue 'a e Potungäue.

1. Tämäte Afi Akoako 82 TU'ANGALU. Samisoni
2. Tämäte Afi Akoako 83 FETU'U. Vaiola 'I Folauhola
3. Tämäte Afi Akoako 84 PALU. 'Alokuo'ulu La'ikie Leiasu Sione
4. Tämäte Afi Akoako 85 TA'UFO'OU Kaihau Siaosi
5. Tämäte Afi Akoako 86 HALAHINGANO. Seluki
6. Tämäte Afi Akoako 87 HOEFT. 'Emelio 'Alipate

### **Kau Ngäue Muli - Hala**

### **Ma'u Vahenga Mälölö, Fakafisi, Tuku ki Tu'a, Mate Lolotonga e Fai Fatongia**

- i) Ma'u Vahenga Mälölö Faka-falemahaki - Hala
- ii) Tuku ki Tu'a - 1

1. Tämäte Afi HUFANGA Vailiki Sione tuku ki tu'a 'o kamata lau mei he 'aho 3<sup>rd</sup> 'Akosi 2012 (CD fika 770, 'aho 31<sup>st</sup> 'Akosi 2012)

iii) Mate lolotonga e fai fatongia - Hala

iv) Fakafisi

Na'e fokotu'u pea tali lelei 'e he Kapineta 'o 'Ene 'Afio 'a e kole fakafisi ko 'eni;

1. Tämäte Afi Ma'olunga SIALE Konili 'Etuata fakafisi 'o kamata lau mei he 'aho 27<sup>th</sup> March 2012 (CD fika 183)

## Fehikitaki Kau Ngäue

Ko e kau ngaue fakakätoa 'e 11 na'a nau kau ki he fehikitaki 'i he ngaahi 'Apitanga Tämäte Afi mo e ngaahi Va'a Ngäue. Ko e ngaahi fehikitaki ko 'eni 'oku hä atu 'i lalo ni:

<u>'Aho</u>	<u>Hingoa</u>	<u>'Apitanga/ Va'a (Mei)</u>	<u>'Apitanga/ Va'a (Ki He)</u>
16/04/2012	AFC 15 Tu'ipulotu. O	Va'a Ako & Fakalalalaka	Va'a Ngäue
13/06/2012	FO 21 Vaka. S	Angahä/ 'Eua	Va'a Ako & Fakalalalaka
18/09/2012	FF 87 Hoeft. 'A	Va'a Ngäue	Va'a Ngäue Fakamalu'i Komuniti
12/11/2012	DFC 2 Huni. S	Lapaha	Va'a Ngäue
12/11/2012	AFC 15. Tu'upulotu. O	Va'a Ngäue	Lapaha
12/11/2012	FC 5. 'Olie. T	Nukunuku	Va'a Ngäue Faka'ofisi & Fakalukufua
12/11/2012	AFC 12 Mafi. S	Va'a Ngäue	Nukunuku
22/11/2012	SFF 29 Vaihu. S	Va'a Ngäue	Angahä/ 'Eua
23/11/2012	PFF 38 VEA. S	Angahä/ 'Eua	Va'a Ngäue

## Ta'u Ngäue

Ta'u	FC - AFC	FO	SFF	PFF	LFF	FF	RFF	Kalake
'I lalo ta'u 'e 1 yrs	-	3	-	-	-	-	-	-
1 – 5 yrs	-	-	1	-	-	10	6	1
5 – 10 yrs	-	-	6	10	11	21	-	-
10 – 15yrs	1	-	4	-	-	-	-	-
15 – 20 yrs	1	8	-	-	-	-	-	-
20 – 25 yrs	4	1	-	-	-	-	-	-
25 – 30yrs	5	-	-	-	-	-	-	-
'Olunga ta'u 'e 30yrs	4	-	-	-	-	-	-	-

FC – Komisiona Tämäte Afi

AFC – Tokoni 'Ofisa Pule Tämäte Afi Ma'olunga

FO - 'Ofisa Tämäte Afi

SFF – Tämäte Afi Ma'olunga

PFF - Taki Tämäte Afi Ma'olunga

LFF – Taki Tämäte Afi

FF – Tämäte Afi

RFF – Tämäte Afi Akoako

Kalake

**Kau Ngäue Fakakalake** - 1

## Konifelenisi ki Muli

- ❖ Na'e kau atu 'a e Komisiona Tämäte Afi, Lofia Heimuli ki he fakataha 'a e PIFSA 6<sup>th</sup> Annual Executive Planning Meeting na'e fai ki Ha'amoia mei he 'aho 26<sup>th</sup> – 27<sup>th</sup> Siulai 2012.
- ❖ Na'e kau atu 'a e Komisiona Tämäte Afi, Lofia Heimuli ki he fakataha 'a e PIFSA Annual General Meeting and Pacific Platform for Disaster Management na'e fai ki Noumea/ New Caledonia mei he 'aho 17<sup>th</sup> – 21<sup>st</sup> Sepitema 2012.

## Ako ki Tu'apule'anga

- ❖ Na'e kau atu 'a 'Ofisa Pule Tämäte Afi Ma'olunga. 7 Fineanganofa. Filisonu'u ki he ako Fire Fighting Techniques na'e fai ki Siapani mei he 'aho 25<sup>th</sup> Siulai – 18<sup>th</sup> 'Okatopa 2012.

## Ako Fakaloto Fonua

- ❖ Na'e folau mai 'a e kau 'Ofisa Tämäte Afi mei he SAMFS 'o fakahoko ha polokalama ako pea pehë ki hono ngaahi 'o e 'ü loli Tämäte Afi na'e maumau mei he 22<sup>nd</sup> Sepitema– 5<sup>th</sup> 'Okatopa 2012.



*Kau 'Ofisa mei he SAMFS mo e kau ngäue 'a e TFS*



*'Ofisa Glenn Benham mei he SAMFS fakahoko'a e ako mo e kaungäue 'a e TFS*



*'Ofisa Glenn Benham mei he SAMFS fakahoko 'a e 'a'ahi ki he kau ngäue 'i he 'Apitanga Tämäte Afi Lapaha*



*'Ofisa Tämäte Afi Geoff William pea mo David Schmerl fakahoko 'a e ako ki hono ngäue'aki 'o e pamu 'i he loli Tämäte Afi*

**Polokalama Fengäue'aki Fakalalaka (SDP)**

'I he ta'u 2012 na'e foaki mai mei he Potungäue Tämäte Afi 'o 'Aositelelia (SAMFS) ha me'a 'ofa tokoni ko e loli Tämäte Afi 'e Fa (4) ki he Potungäue Tämäte Afi 'a Tonga pea pehë ki he ngaahi me'a ngäue faka-tämäte afi kehekehe 'o fakafou 'i he polokalama fengäue'aki fakalalaka 'i he vaha'a 'o e ongo Potungäue ni (TFS) pea mo e (SAMFS).



*Loli Tämäte Afi 'e Fa (4) mo e ngaahi me'a ngäue faka-tämäte afi me'a 'ofa tokoni mei he SAMFS*



## Me'a 'Ofa Tokoni Me'alele

Na'e foaki mai 'e he Pule'anga Siapani ha ongo me'alele fo'ou 'e Ua (2) 'o fakatau mu'a ki he 'Apitanga Tāmāte Afi 'i Neiafu/ Vava'u pea mo Angahā/ 'Eua. Ko ongo me'alele fo'ou ko 'eni na'e foaki faka'ofisiale ia 'e he Tangata'eiki 'Amipasitōa Siapani ki Tonga, His Excellency Dr. Kazuchika Hamuro 'i he 'aho 21<sup>st</sup> Novema 2012.



*Me'alele fo'ou 'e 2 me'a 'ofa tokoni  
mei he Pule'anga Siapani*



*Ko hono foaki atu 'a Kī 'o e ongo me'alele fo'o 'e he 'Amipasitōa  
Siapani ki Tonga HE Dr, Kazuchika Hamuro ki he 'Eiki Tokoni  
Palemia, Hon. Samiu Vaipulu*

# Ngäue Va'a Ngäue

## Ngaahi Fakatamaki Na'e Fakahoko Kiai 'a e Ngäue

Na'e ngäue 'a e Tämäte Afi ki he ngaahi fakatamaki fakakätoa 'e 234 lolotonga 'a e ta'u 'aia ne lahi 'aki ia 'a e fakatamaki 'e 22 (10.3%) fakafehoanaki ki he ta'u kuo 'osi.

'Oku 'analaiso 'a e fa'ahinga kalasi 'o e fakatu'utamaki 'i lalo ni:

### Fakafehoanaki 'o e Vela & Fakatamaki kehe

Ta'u	2011			2012		
<b>Fakakätoa Vela &amp; Fakatamaki na'e hoko</b>	<b>212</b>			<b>234</b>		
<b>Fa'ahinga Fakatamaki</b>	Vela Fale	68	32.2%	Vela Fale	57	24.3%
	Vela Vao	71	33.6%	Vela Vao	92	39.3%
	Vela Makehe	38	17.9%	Vela Makehe	58	24.7%
	Ngäue Makehe	7	3.3%	Ngäue Makehe	2	0.85%
	'Ikai ha Vela/ Lipooti Loi	28	13.2%	'Ikai ha Vela/ Lipooti Loi	25	10.6%
<b>Fakatamaki na'e hoko 'i he Vahenga</b>	Tongatapu	190	90%	Tongatapu	203	86.7%
	Vava'u	16	7.5%	Vava'u	16	6.8%
	Ha'apai	3	1.4%	Ha'apai	13	5.5%
	'Eua	3	1.4%	'Eua	2	0.85%
<b>Mate</b>	<b>Taha (1) 'I he Vela Fale moe Fä (4) 'I he Me'alele Fakatu'utamaki</b>			<b>Taha (1) 'i he Vela Fale mo e Taha (1) 'i he Me'alele Fakatu'utamaki</b>		
<b>Mahu'inga Fakapa'anga (Fakafuofua)</b>	2,190,662			1,537,705		
<b>Vela &amp; Fakatamaki 'i he Mahina</b>	Ma'olunga taha	'Akosi	33	Ma'olunga taha	Tisema	42
	Ma'ulalo taha	Fepueli	7	Ma'ulalo taha	Ma'asi	7

**Vela Fale:** 'I he fakakätoa 'o e ngaahi vela ne hoko, ko e vela ai 'e 57 ko e vela fale 'aia 'oku holo'aki ia 'a e peseti 'e 16.1% mei he ta'u kuo hili. Ko e vela fale ne hoko ne kau kiai 'a ngaahi 'api nofo'anga mo e ngahi fale fakapisinisi pea ko hono ngaahi tupu'anga 'oku hä atu 'i lalo:

Mahalo'i Tupu'anga Vela Fale	2011	2012
Fakatupupakë	1	-
Tü Fale	2	3
Te'elango	3	6
Faka'ahunamu	8	2
Maama Matangi Kalasini	-	1
'Uhila	2	2
Feime'atokoni 'ikai ha taha ai	1	3
Va'inga'aki e masi	2	-
Sitou	1	6
Mofisi e afi mei he tafu'anga afi	2	-
Tutu tu'unga veve	4	2
'Ikai 'ilo'i tupu'anga	42	32
<b>FAKAKÄTOA</b>	<b>68</b>	<b>57</b>

**Vela Vao:** 'I he vela 'e 92 ne ngäue atu kiai 'a e Tämäte Afi 'i Tonga ni ko e peseti 'e 39.3% ko e vela vao. 'Oku mahu'inga 'eni ki he ngäue 'oku fakahoko he ko e vela vao 'oku ne fakakaka ki 'olunga 'a e fika 'o e vela 'oku hoko 'i he ta'u.

**Vela Makehe:** Na'e hiki'aki e peseti 'e 52.6% mei he ta'u 2011 'i he fakakätoa e vela makehe 'e 58 ne hoko 'aia ne kau kiai e vela tu'unga veve, vela 'uhila, etc.

**Ngäue Makehe:** Ko e ngäue makehe 'e 2 fakakätoa ne fai kiai e ngäue lolotonga e ta'u. Ko e ngäue makehe ko 'eni na'e holo ki lalo 'aki 'a 5 (71.4%) fakafehoanaki 'o e ta'u 2012 ki he ta'u 2011.

**'ikai ha Vela/ Lipooti Vela Loi:** Ko e lipooti vela loi pea mo e 'ikai ha vela ne hoko 'e 25 fakakätoa na'e hoko. Ko e holo'aki ia e peseti 'e 10.7 mei he ta'u kuo 'osi.



*Vela Fale (Falekoloa Siaina) 'i Tofoa*



*Kau ngäue Tämäte Afi feinga ke tamate'i 'a e vela fale (Fale Nofu'anga)*



*Ako 'a e kau ngäue Tämäte Afi pea mo kautaha Lolo (Total) ki he fakatu'utamaki 'i he Hala Pule'anga*

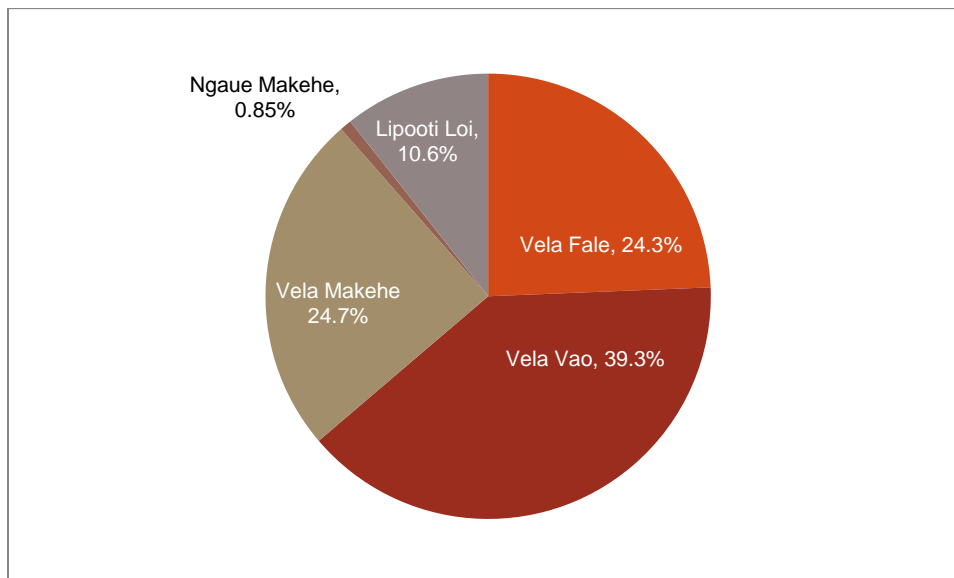


*Vela Fale 'i Longolongo (Fale Nofu'anga)*

**Vela & Fakatamaki Kehe Na'e Hoko – 2012**

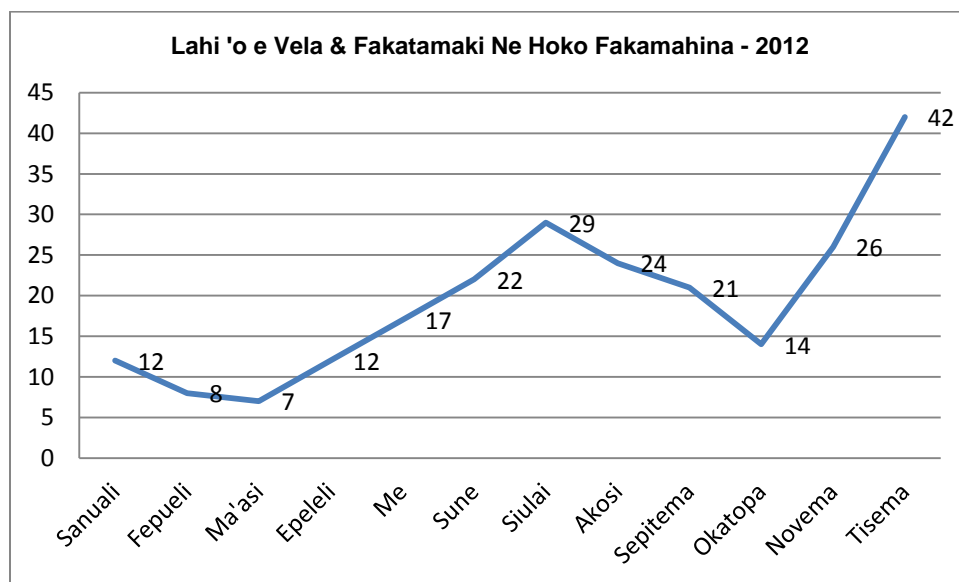
Ta'u	2012			
<b>Fakakātoa Vela &amp; Fakatamaki na'e hoko</b>	<b>234</b>			<b>\$</b>
<b>Fa'ahinga Fakatamaki</b>	Vela Fale	57	24.3%	1,202,025
	Vela Vao	92	39.3%	248,760
	Vela Makehe	58	24.7%	82,380
	Ngāue Makehe	2	0.85%	3,050
	'Ikai ha Fakamataki/ Lipooti Loi	25	10.6%	1,490
<b>Fakatamaki na'e hoko 'i he Vahenga</b>	Tongatapu	203	86.7%	1,142,350
	Vava'u	16	6.8%	292,055
	Ha'apai	13	5.5%	21,300
	'Eua	2	0.85%	82,000
<b>Mate</b>	Taha (1) Mate Vela Fale & Taha (1) Mate Me'alele Fakatu'utamaki			
<b>Mahu'inga Fakapa'anga (Fakafuofua)</b>	1,537,705			
<b>Vela &amp; Fakatamaki 'i he Mahina</b>	<b>Ma'olunga taha</b>	Tisema	42	17.9%
	<b>Ma'ulalo taha</b>	Ma'asi	7	2.9%

**Fa'ahinga Fakatamaki Na'e Hoko 'i Tonga 2012**



**Vela mo e Fakatamaki Kehe Na'e Hoko & Fakafuofua Mahu'inga Fakapa'anga – 2012**

No.	Mahina	Lahi 'o e Vela/ Fakatamaki kehe Na'e Hoko	Mahu'inga Fakapa'anga (\$)
1	Sanuali	12	169,550
2	Fepueli	8	70,600
3	Ma'asi	7	41,530
4	'Epeleli	12	54,820
5	Mē	17	205,475
6	Sune	22	65,840
7	Siulai	29	235,080
8	'Akosi	24	29,650
9	Sepitema	21	231,550
10	'Okatopa	14	151,420
11	Novema	26	246,150
12	Tisema	42	36,040
	<b>TOTAL</b>	<b>234</b>	<b>1,537,705</b>



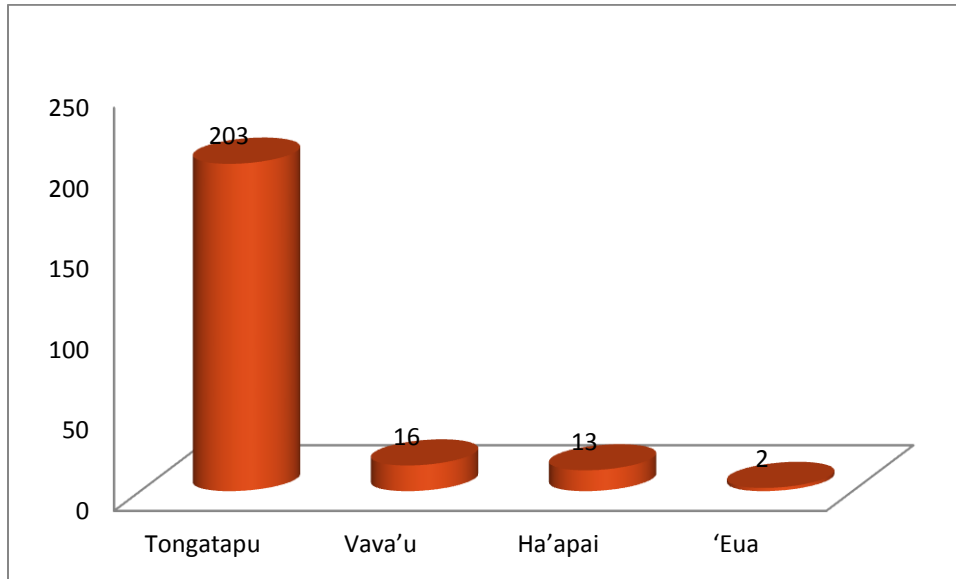
**Vela & Fakatamaki Kehe Ngäue kiai Ngaahi 'Apitanga Tämate Afi - 2012**

	Nuku'alofa	Vava'u	Ha'apai	'Eua	Lapaha	Nukunuku	
<b>'Apitanga Tämate Afi Fa'ahinga Fakatamaki</b>	Vela Fale	35	6	2	5	7	
	Vela Vao	39	4	11	-	14	
	Vela Makehe	40	5	-	-	6	
	Ngäue Makehe	1	-	-	-	-	
	Lipooti Vela Loi/ 'Ikai ha Vela	24	1	-	-	-	
	<b>TOTAL</b>	<b>139</b>	<b>16</b>	<b>13</b>	<b>2</b>	<b>37</b>	<b>27</b>
<b>Mahu'inga Fakapa'anga</b>	Vela Fale	677,920	85,925	10,000	82,000	16,100	330,080
	Vela Vao	15,320	205,650	11,300	-	6,970	9,520
	Vela Makehe	42,700	380	-	-	12,450	26,850
	Ngäue Makehe	3,000	-	-	-	50	-
	False Alarm	1,390	100	-	-	-	-
	<b>FAKAKÄTOA</b>	<b>740,330</b>	<b>292,055</b>	<b>21,300</b>	<b>82,000</b>	<b>35,570</b>	<b>366,450</b>
<b>Mate</b>	Vela Fale	-	-	1	-	-	-
	Me'alele	1	-	-	-	-	-
	<i>Fakatu'utamaki</i>						

**Taimi Fakafuofua Na'e Hoko ai 'a e Vela & Ngaahi Fakatamaki Kehe - 2012**

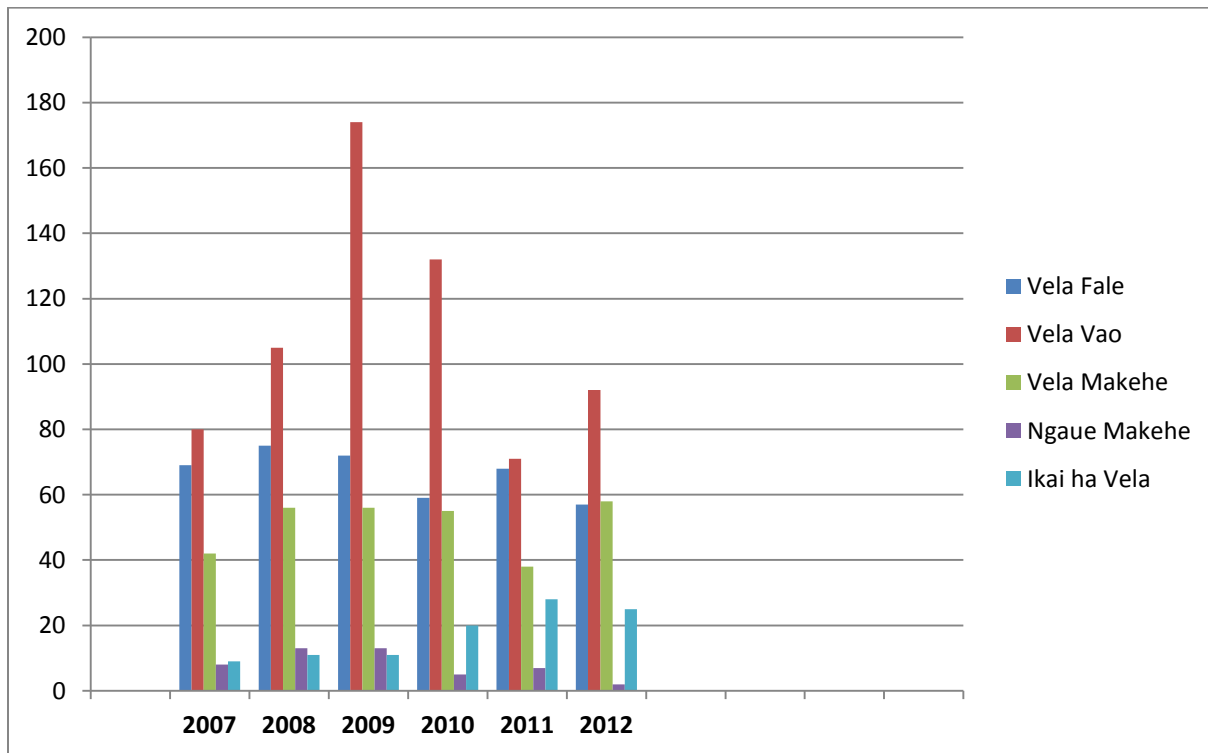
Timi		0000Hrs – 0400Hrs	0400Hrs – 0800Hrs	0800Hrs – 1200Hrs	1200Hrs – 1600Hrs	1600Hrs – 2000Hrs	2000Hrs – 2400Hrs	FAKAKÄTOA
<b>Fa'ahinga Fakatamaki</b>	Vela Fale	11	9	8	9	8	12	57
	Vela Vao	-	1	10	59	20	2	92
	Vela Makehe	5	4	10	12	20	7	58
	Ngäue Makehe	-	-	-	-	2	-	2
	Lipooti Vela Loi/ 'Ikai ha Vela	3	4	4	6	4	4	25
		<b>19</b>	<b>18</b>	<b>32</b>	<b>86</b>	<b>54</b>	<b>25</b>	<b>234</b>

**Vela & Fakatamaki Kehe Ngäue Kiai Ngaahi 'Apitanga – 2012**



**'ANALISO MO HONO FAIKEHEKEHE NGAHI VELA & FAKATAMAKI KEHE 2007 – 2012**

Lolotonga 'a e hokohoko 'a e vela vao pea ko e lahi taha ia 'o e vela 'oku hoko fakakätoa, ko e vela fale 'oku meimei ke tu'uma'u pe 'i he 'avalisi ko e lahi hake 'i he vela 'e 50 'i he ta'u.



# Ngäue Fakamalu'i ki he Komiuniti

## Malu'i mei he Vela

Ko e polokalama fakakätoa 'e 96 ki hono faka'ehi'ehi'i 'o e vela ki he ngaahi komiuniti na'e lava 'o fakahoko lolotonga 'a e ta'u fakafehoanaki ki he 74 'i he ta'u 2011. Ne kau ki heni 'a e ngaahi polokalama lea mo hono fakatätä'i 'a e founga tamate'i 'o e vela, founga hola ki tu'a 'i ha vela fale, 'a'ahi ki he ngaahi kulupu fakakolo ki 'uta, 'a'ahi ki he ngaahi 'api ako, etc.



*Timi ngäue faka'ehi'ehi fakahoko polokalama CEP  
ki he 'Api ako Kinitakateni*



*Timi ngäue faka'ehi'ehi fakahoko 'a e ako  
ki he anga hono ngäue'aki 'o e Hina Tämäte Afi*



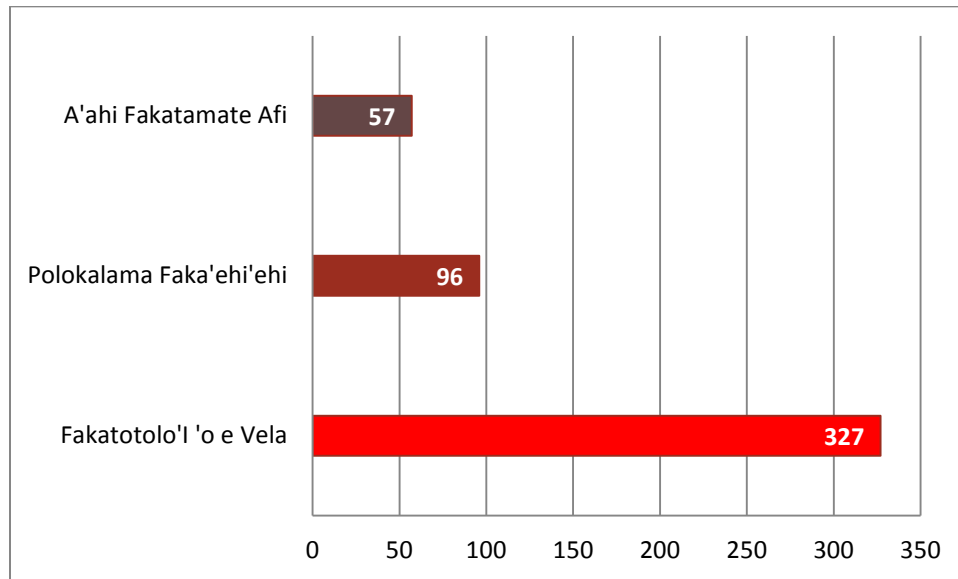
*Timi ngäue faka'ehi'ehi fakatätä anga hono  
ngäue'aki Hina Tämäte Afi ki he kau ngäue kautaha Pisinisi*



*Timi ngäue faka'ehi'ehi fakahoko 'a'ahi faka-tämäte afi*

## 'A'ahi Faka-Tämäte Afi

Ko e polokalama ki he malu'i mei he velá na'e kau ki ai 'a hono 'a'ahi, sivi 'o e ngaahi me'angäue tämate afi ki he ngaahi tuku'anga lolo, fale fakatakimamata pea mo e ngaahi fale fakatau'anga kava malohitapu lolotonga 'o e ta'u. Koe fale fakakätoa 'e 327 na'e 'a'ahi 'i Tonga ni fakata'u pea ke lava ke ma'u ha'anau laiseni pisinisi.



*'A'ahi faka-tämäte afi ki he fale fakatau'anga kavamalohitapu*



*Polokalama T.V & Letiö faka'ehi'ehi 'o e vela'oku 'iloa ko e 'Tala Kei Kapa Na'ake Tö Ki Mala''*



## Me'a'ofa Tokoni Ki He Va'a Malu'i & Faka'ehi'ehi' 'o e Vela

'I he ta'u 2012 na'e foaki ai 'e he ongo Kautaha Malu'i National Pacific Insurance (Tonga) Ltd pea mo e Dominion Insurance Company ha me'a'ofa tokoni ki he Va'a Malu'i & Faka'ehi'ehi' 'o e Vela. Ko me'a'ofa ko 'eni ne kau kiai 'a e *Laptop*, *Data Projector* pea mo e *Screen Projector* 'o fakataumu'a ke tokoni ki he ngaahi polokalama malu'i mo hono faka'ehi'ehi'i 'o e vela ki he ngaahi 'Api Ako, ngaahi Kautaha Taautaha pea pehë ki he ngaahi tukui kolo.



*Pule Kautaha Malu'i NPI foaki Laptop fo'ou ki he Va'a CSD*



*Fakafofonga Kautaha Malu'i Dominion foaki Data Projector fo'ou ki he Va'a CSD*

## Sivi'i 'o e Ngaahi Mape Langa Fale

Ko e mape langa fale fakakätoa 'e 165 kau kiai 'a e mape fale langa faka-komesiale pea mo e mape fale langa fakataautaha na'e fakahu mai ki he Potungäue Tämäte Afi ke fai hono sivi'i kimu'a pea toki foaki atu 'e he Pule Ma'u Mafai ki he langa fale ha ngofua langa fale.

## Palopalema ne Uesia e Ngäue'anga

### Palopalema ne Uesia 'a e Ngäue'anga

- a) Tokosi'i 'a e kau ngäue kuo ako'i fakangäué.
- b) 'Ikai ha ma'u'anga vai pë tuku'anga vai makehe ki he ngäue fakatämäte afi 'i he ngaahi kolo iiki.
- c) 'Ikai ke mälohi fe'unga e tafe 'a e vai' ke ngäue'aki 'e he kau tämate afi' 'i he ngaahi feitu'u 'o 'ikai lau ki ai 'a e vahe Nuku'alofá.
- d) Tuai hono fakahä mai 'o e vela mei he ngaahi feitu'u ne hoko ai e velá.
- e) Tömui 'a e ngäue ki he vela 'i he ngaahi kolo iiki, koe'uhi ko 'enau mama'o mei koló.
- f) Si'isi'i 'a e ngaahi housi mo e me'angäue.
- g) 'Ikai fe'unga 'a e pa'anga 'oku tuku mai mei he Pule'anga ke fakalele'aki 'a e ngaahi ngäue 'a e Tämäte Afi
- h) Si'isi'i 'a e ngaahi me'alele ke fakahoko'aki e ngaahi ngäue faka'aho.
- i) 'Ikai ha me'a ngäue moha naunau fe'unga ki hono fakalalakaka'i 'a e ngäue ki hono faka'ehi'ehi mei he vela.

# Pa'anga 'Esitimeti

## FAKAIKIKI 'O E NGAahi FAKAMOLE KI HE TA'U 2012

	\$	\$	\$
<b>Pastiseti Fakaangaanga ki he ta'u 2012</b>			\$ 1,702,650.00
<b>Tauhi mo Fakalele 'a e Ngaahi Me'angäue</b>			
Monomono / Tauhi 'o e Ngaahi Me'alele	\$ 39,148.59		
'Utu	\$ 57,694.65		
Me'akai	\$ 52,551.51	\$ 149,394.75	
<b>Ngaahi Fakamole ki hono Tauhi 'a e 'Apitanga</b>			
Vai	\$ 7,710.72		
Monomono / Tauhi 'o e Ngaahi 'Ofisi.	\$ 7,917.69		
'Uhila	\$ 20,316.68	\$ 35,945.09	
<b>Ngaahi Fakamole ki he Fefononga'aki</b>			
Fefolau 'aki Fakalotofonua	\$ 9,567.02		
Me'alele Fo'ou	\$ -		
Fefolau'aki Fakavaha'a Pule'anga	\$ 3,462.60	\$ 13,029.62	
<b>Ngaahi Fakamole ki he Fetu'utaki</b>			
Fakamole ki he Telefoni	\$ 8,230.61		
'Imeili mo e 'Initaneti	\$ 2,263.16	\$ 10,493.77	
<b>Ngaahi monu'ia 'a e Kaungaue</b>			
Vahenga	\$ 1,118,729.94		
Penisoni	\$ 115,956.81		
Le'ole'o he ngaahi Lakanga	\$ 2,799.00		
Ngaahi monu'ia 'a e Komisiona	\$ 7,000.00	\$ 1,244,485.75	
<b>Ngaahi Fakamole ki he Ngaahi Koloa</b>			
Ngaahi Me'angäue Fakatekinikale	\$ 5,836.94	\$ 5,836.94	
<b>Ngaahi Fakamole ki he Naunau Faka'Ofisi</b>			
Naunau Faka'ofisi	\$ 19,425.11		
Monomono / Tauhi Naunau Faka'ofisi	\$ 3,530.06		
Naunau ki he Paaki/ mo e Hikitatau	\$ 9,355.04		
Fakamafola Lea mo e 'Ata	\$ 18,228.06		
Tute	\$ 139,857.10		
Tu'uaki	\$ 8,605.23		
Teunga Ngäue	\$ 35,614.92		
Laiseni	\$ 8,640.00		
Fakamole Makehe	\$ 5,769.60	\$ 249,025.12	\$ 1,708,211.04

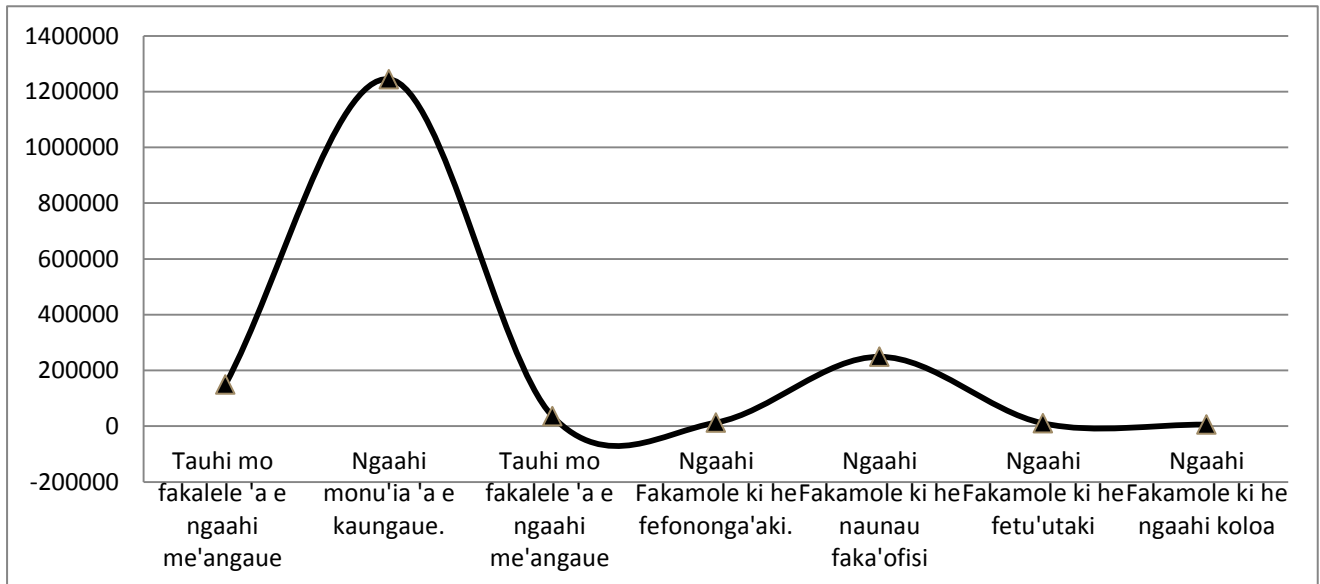
Hulu / (nounou)

\$ (5,561.04)

*Kataki 'o fakatokanga'i ange na'e hulu 'aki 'ehe fakamole ki he 2012 'a e peseti 'e 9% 'i he patiseti fakaangaanga makatu'u ia 'i he tute 'o e ngaahi me'angaue mei 'uafu ki he 2012 fe'unga kotoa ia mo e \$139,589.80 fakafehoanaki ki he patiseti na'e pa'anga pe 'e \$20,000.*

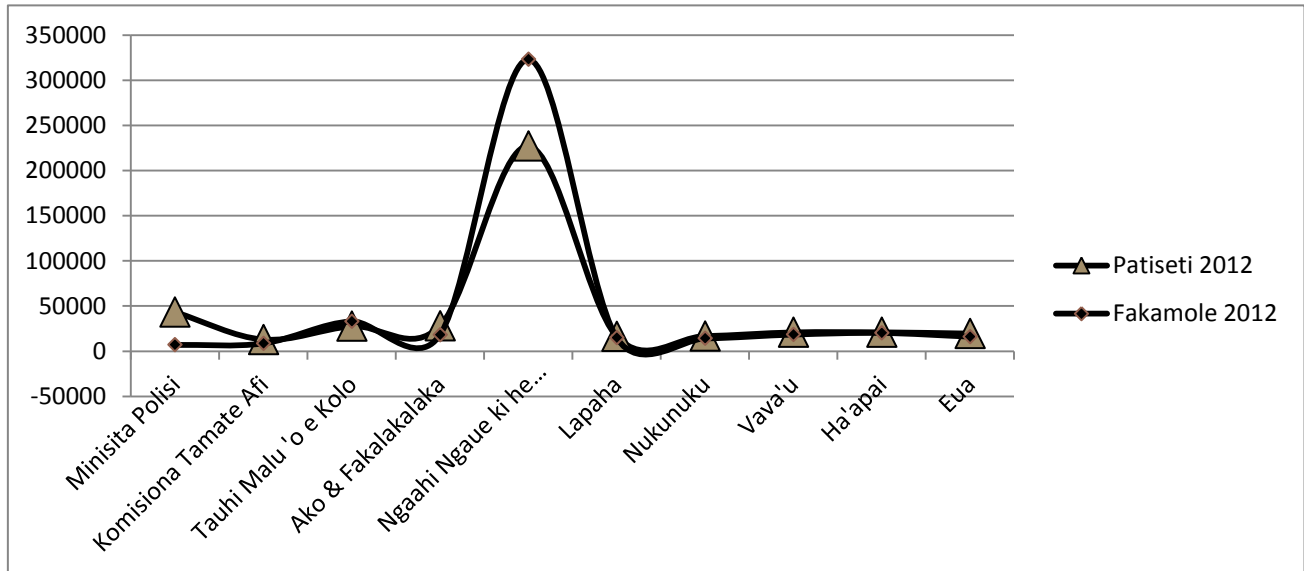
**NGAAHI FAKAMOLE KI HE TA'U 2012**

<u>NGAAHI FAKAMOLE</u>	<u>2012</u>
Tauhi mo fakalele 'a e ngaahi me'angaue	149,394.75
Ngaahi Monu'ia 'a e Kaungaue.	1,244,485.75
Tauhi mo Tokanga'i 'a e Ngaahi 'Apitanga	35,945.09
Ngaahi Fakamole ki he Fefononga'aki.	13,029.62
Ngaahi Fakamole ki he Naunau Faka'ofisi	249,025.12
Ngaahi Fakamole ki he Fetu'utaki	10,493.77
Ngaahi Fakamole ki he Ngaahi Koloa	5,836.94
<b>Fakamole Fakakätoa</b>	<b>\$1,708,211.04</b>



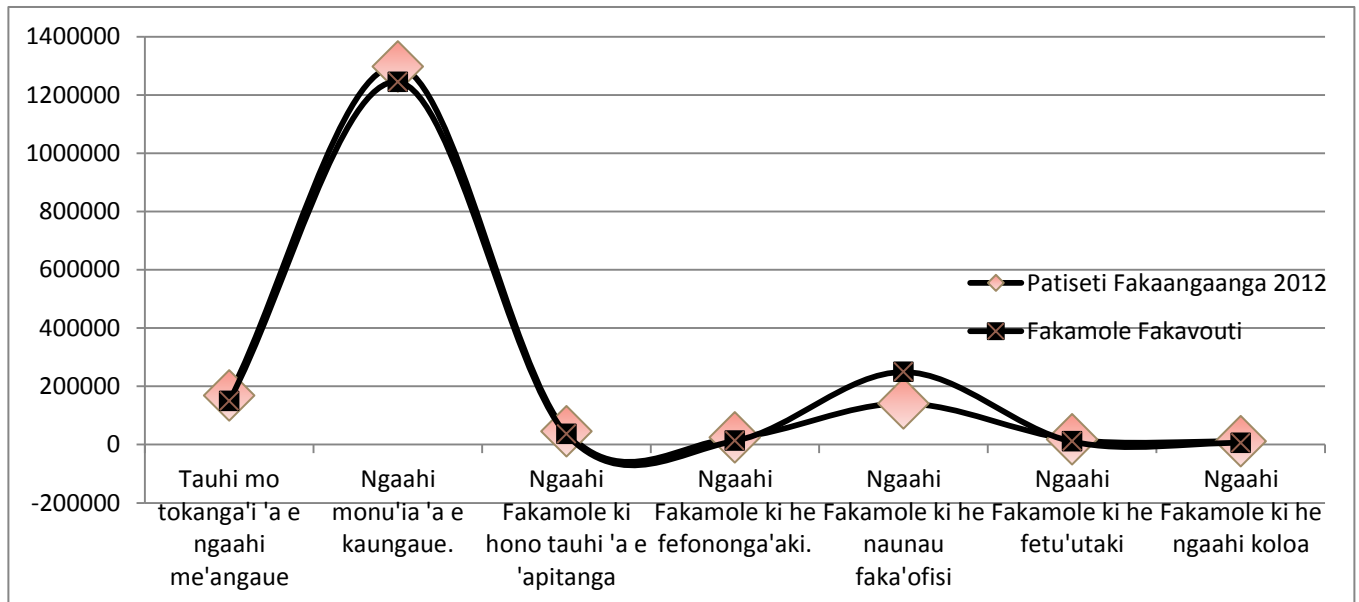
**NGAAHI VA'A vs PATISETI FAKAANGAANGA (FAKAMOLE ANGAMAHENI)**

<u>Ngaahi Va'a 'a e Potungaue</u>	<u>Patiseti Fakaangaanga ki he Ta'u 2012</u>	<u>Fakamole ki he Ngaahi Va'a ki he Ta'u 2012</u>
Minisita Polisi	43,250.00	6,962.68
Komisiona Tamate Afi	12,900.00	8,635.69
Tauhi Malu 'o e Kolo	27,600.00	32,982.79
Ako & Fakalalaka	28,000.00	18,120.24
Ngaahi Ngaue Ki He Fakalalaka Potungaue	226,956.50	323,018.80
Lapaha	16,389.50	15,001.53
Nukunuku	16,700.00	14,112.74
Vava'u	20,800.00	18,420.72
Ha'apai	20,900.00	20,167.78
Eua	19,500.00	16,101.32
<b>Patiseti mo e fakamole ki he ngaahi va'a takitaha</b>	<b>\$432,996.00</b>	<b>\$473,524.29</b>



## VOUTI vs PATISETI FAKAANGAANGA 2012

<u>Vouti</u>	<u>Patiseti Fakaangaanga 2012</u>	<u>Fakamole ki he vouti takitaha 2012</u>
Tauhi mo fakalele 'a e ngaahi me'angaue	167,489.20	149,394.75
Ngaahi monu'ia 'a e kaungaue.	1,297,154.00	1,244,485.75
Ngaahi Fakamole ki hono Tokana'i 'o e 'Apitanga	44,793.11	35,945.09
Ngaahi Fakamole ki he Fefononga'aki.	23,794.50	13,029.62
Ngaahi Fakamole ki he Naunau Faka'ofisi	140,969.61	249,025.12
Ngaahi Fakamole ki he Fetu'utaki	17,399.59	10,493.77
Ngaahi Fakamole ki he Ngaahi Koloa	11,050.00	5,836.94
<b>Fakakatoa</b>	<b>\$1,702,650.00</b>	<b>\$1,708,211.04</b>



**FAKAIKI KI MO HONO VAHEVAHE 'A E PATISETI 2012 KI HE NGAHI POLOKALAMA**

<b>Polokalama</b>	<b>Fakatahataha'i 'a e Patiseti ki he Vahenga 2012</b>	<b>Penisoni</b>	<b>Ngaahi Fakamole Anga maheni</b>	<b>FAKAKÄTOA</b>
Pule'i & Fale'i	48,400.00		56,150.00	104,550.00
Tauhi 'o e Malu 'o e Kolo	97,279.50		27,600.00	124,879.50
Ako Ngäue & Fakalalakaka	76,090.00		28,000.00	104,090.00
Ngaahi Ngäue Ki He Fakalalakaka				
Potungäue	986,140.50	93,304.00	289,686.00	1,369,130.50
<b>FAKAKÄTOA</b>	<b>\$1,207,910.00</b>	<b>\$93,304.00</b>	<b>\$401,436.00</b>	<b>\$1,702,650.00</b>
(to'o)/tanaki; ngaahi fakalahi vouti kuo fakamafai'i				
<b>Fakamafai'i ke To'o Mei He;</b>	(56,314.38)			(56,314.38)
<b>Fakamafai'i ke 'Ave Ki He;</b>		24,754.38	31,560.00	56,314.38
<b>Patiseti 2012</b>	<b>\$1,151,595.62</b>	<b>\$118,058.38</b>	<b>\$432,996.00</b>	<b>\$1,702,650.00</b>
<b>Ngaahi Fakamole</b>	1,118,729.94	115,956.81	473,524.29	1,708,211.04
<b>Kätoa mo e Fakamole na'e Hulu</b>	<b>\$32,865.68</b>	<b>\$2,101.57</b>	<b>\$(40,528.29)</b>	<b>\$(5,561.04)</b>

## Fakama'opo'opo

Ko e ta'u Uaafe Taha Ua (2012) na'e tu'unga fakafiemalie pe 'a e ola na'e ma'u tukukehe ange 'a e ngaahi faingata'a mo e palopalema na'e fehangahangai mo fefaka'ätungia'i 'a e ngaue moe faifatongia.

Ko hono 'uhinga pe koe 'ikai ma'u 'e he Va'a Tämäte afi 'a e me'a ngaue fe'unga mo taau pea moha pa'anga 'aia 'oku fiema'u ke fakalele'aki 'a e ngaue ke toe lelei ange.

'Oku ou fakafofonga'i atu ai heni 'a e Potungaue Tämäte Afi hono kotoa 'a e fakamälo lotohouga mo'oni ki he tangata'eiki Minisitä Polisi ki he 'ene ngaahi fokotu'utu'u moe taki lelei kotoa pe kuo ne fai lolotonga 'a e ta'u 2012. Na'e malava ai heni ke malavalava 'a e faifatongia 'o e Potungaue 'i he taumu'a ki hono malu'i 'o e mo'ui pea moe koloa mei he fakatu'utamaki 'o e vela mo ha ngaahi fakatamaki kehe pe.

'Oku ou kole fakamolemole atu kapau na'e 'iai ha tönounou 'i he taumu'a 'o e faifatongia 'i he ngaue'anga ni.

.....  
Lofia-'I-Vailahi Heimuli  
**Komisiona Tämäte Afi**



# Fakalahi Fakaikiiki

## Vela mo e Ngaahi Fakatamaki Ne Hoko Ne Ngäue Kiai 'a e Potungäue Tämäte Afi 'a Tonga- 2012

Fika	Fa'ahinga Fakatamaki	Feitu'u	Taimi/'Aho Lipooti	Tokotaha 'O'ona/Tokotaha Nofu	Mahalo'i ki he Tupu'anga	Koloa ne Kau Kiai	Mahu'inga Fakapa'anga (Fakafuofua)
1	'Ikai ha Vela	Palasi Faka- Tu'i (Nuku'alofa)	07/01/2012 0308Hrs	King Siaoisi Tupou V	'Ikai Fakapapau'i	Me'a ngaue Fakatokanga Vela	50
2	Vela Vao	Leimatu'a	11/01/2012 1305Hrs	Siaoisi Vaka'uta (m) 70yrs/ Sione Tali (m) 58 yrs	Tutututu	Vao	150
3	Vela Vao	Tofoa	13/01/2012 1421Hrs	Hu'ahulu Ha'unga (m) 40yrs	'Ikai Fakapapau'i	Vao 'eka 'e 2, 'ulu pata 7m x 5.3m	150
4	Vela Fale	Kolomotu'a	16/01/2012 1513Hrs	Vaiola Funaki (m) 59yrs	'Ikai Fakapapau'i	falenofu'anga maumau kotoa 30ft x 40ft	8000
5	Vela Fale	'Ohonua	16/01/2012 1627Hrs	Vaimana Tau (f) 87yrs	'Ikai Fakapapau'i	Falenofu'anga maumau kotoa	80000
6	Vela Vao	Tokomololo	16/01/2012 1750Hrs	Fe'ofa'aki Tu'i'onetoa (m) 40yrs	Tutututu	Vao 'eka 'e ½	50
7	Vela Fale	Kolofu'ou	16/01/2012 2227Hrs	Pule'anga Tonga	'Ikai Fakapapau'i	12m x 10m 'ofisi 'i he Pangike Pule 'a Tonga maumau kotoa	27000
8	'Ikai ha Vela	Tu'anuku	17/01/2012 1527Hrs	-	-	-	100
9	Vela Fale	Tatakamotonga	21/01/2012 2249Hrs	Folau Läti (m) 59yrs/ Vakafisi Läti (m) 18yrs	Tutu 'e he 'Atamai Vaivai	2.5m x 2.5m falenofu'anga maumau kotoa	500
10	Vela Fale	Ha'ateiho	22/01/2012 0648Hrs	Malia Lausi'i (f) 72yrs/ Cehle Werner (m) 52yrs	'Ikai Fakapapau'i	5.5m x 7.8m fale tuku'anga me'angaue, solar system maumau kotoa	45000
11	Vela Kehe	Tatakamotonga	23/01/2012 1030Hrs	Malakai Siale (m) 36yrs	'Ikai Fakapapau'i	L12341 maumau kotoa	8500
12	'Ikai ha Vela	Tofoa (Falemahaki Vaiola)	31/01/2012 2244Hrs	Pule'anga Tonga/ Potungäue Mo'ui	'Ikai Fakapapau'i	Me'a ngaue Fakatokanga Vela	50
13	Vela Kehe	Nukunuku	02/02/2012 0250Hrs	Kalisi Tuionuku (f) 27yrs	Tutu	Me'alele C15155 maumau kotoa	9000
14	Vela Fale	Sopu	04/02/2012 1759Hrs	Pasoni Malii (m) 43yrs	'Ikai Fakapapau'i	7.26m x 4.92m falenofu'anga maumau kotoa	7000
15	'Ikai ha Vela	Palasi Faka- Tu'i (Nuku'alofa)	10/02/2012 1455Hrs	Siaoisi Tupou v	'Osi maka 'o e me'angaue fakatokanga vela	Me'a ngaue Fakatokanga Vela	50
16	Vela Fale	Tokomololo	12/02/2012 1858Hrs	Sefa Tu'akoi (m) 45yrs Salesi Tu'akoi (m) 30yrs	Sitou kasa	5m x 3m falenofu'anga maumau kotoa	2500
17	'Ikai ha Vela	Palasi Faka-Tu'i (Nuku'alofa)	17/02/2012 1528Hrs	Siaoisi Tupou VI	'Ikai Fakapapau'i	Me'a ngaue Fakatokanga Vela	50
18	Vela Kehe	Nukunuku	21/02/2012 0109Hrs	'Alimeti Tuionuku (m) 30yrs	Tutu	Me'alele C14168 maumau kotoa	8000
19	Vela Fale	Fasi – moe – Afi	23/02/2012 2328Hrs	Tomasi Mafua Hingano (m) 63yrs/ Solomone Tu'ungafasi (m) 31 yrs	'Ikai Fakapapau'i	30m x 20m falenofu'anga maumau kotoa	42000
20	Vela Kehe	Vaini	24/02/2012 1220Hrs	Tevita Palaiti (m) 80yrs	Mofisi mei he tafu'anga afi	9.3 x 5.9m falenofu'anga maumau kotoa	2000

21	Vela Kehe	Veitongo	09/03/2012 0554Hrs	Va'a Toloke	'Ikai Fakapapau'i	Me'alele C15155 maumau kotoa	10000
22	Vela Kehe	Tofoa (Falemahaki Vaiola)	09/03/2012 1959Hrs	Seteone 'Anitema (m) 54yrs	Matu'utamaki	J5667 maumau si'isi'i	800
23	Vela Fale	Haveluloto	23/03/2012 0459Hrs	Siasi Tonga Konisitutone	'Uhila	40m x 20m Falelotu maumau si'isi'i	250
24	Vela Vao	Haveluloto	24/03/2012 1058Hrs	Soakimi Tu'ipulotu Palu (m) 72yrs	Tutututu	Vao	50
25	Vela Vao	Haveluloto	26/03/2012 1321Hrs	Saia Moehau	Tutututu	Vao 'eka 'e 3, ngoue pele, 'ulu siaine, fu'u 'akau papa 'e 1	350
26	Vela Fale	'Isileli	27/03/2012 0208Hrs	Vilivuni Kupu (m) 42yrs/ Sione Tali Mafi (m) 20yrs	Sitou Kasa	11m x 10m falenofu'anga maumau kotoa	30000
27	Vela Fale	Kahoua	27/03/2012 0328Hrs	'Isileli Kongaika (m) 62yrs/ Noa Na'a (m) 29yrs	Tü Fale	10.40m x 9.80m falenofu'anga 'ikai nofu'i maumau si'isi'i	80
28	Vela Kehe	Ma'ufanga	06/04/2012 0437Hrs	Hon. Fakafanua	'Ikai Fakapapau'i	Fu'u toa	100
29	'Ikai ha Vela	Nuku'alofa (Falekoloa Molisi Tonga)	07/04/2012 0316Hrs	Feleti Sevele	'Ikai Fakapapau'i	Me'a ngaue Fakatokanga Vela	40
30	'Ikai Ha Vela	Tofoa (Falemahaki Vaiola)	09/04/2012 1953Hrs	Pule'anga Tonga/ Potungau Mo'ui	'Ikai Fakapapau'i	Me'a ngaue Fakatokanga Vela	80
31	Vela Fale	Tu'anekivale	10/04/2012 1907Hrs	Matangisina 'Uhila (m) 52yrs	Te'elango	7.4m x 4.9m falenofu'anga maumau si'isi'i	1200
32	Vela Fale	Kanokupolu	11/04/2012 0200Hrs	Katoanga Fa'oa (m) 52yrs	Sitou Kasa	32m x 42m falenofu'anga maumau kotoa	40000
33	Vela Kehe	Kahoua	14/04/2012 1307Hrs	Saia Tongia (m) 34yrs	'Ikai Fakapapau'i	L9631 maumau si'isi'i	4000
34	Vela Kehe	Mataika	20/04/2012 1919Hrs	Pule'anga Tonga	'Iaki Fakapapau'i	Tu'unga veve	30
35	Vela Kehe	Tofoa	21/04/2012 1938Hrs	Tevita Kamoto (m) 73yrs/ Nesiasi Kamoto (m) 40yrs	Tutututu	Me'alele maumau 'e 1	70
36	Vela Fale	Te'ekiu	23/04/2012 2254Hrs	Mateaki Lauhingo (m) 43yrs/ Vaka Lauhingo (m) 41yrs	Te'elango	8.26m x 4.16m falenofu'anga maumau kotoa	8000
37	Vela Fale	Tofoa	24/04/2012 1404Hrs	Pule'anga Tonga/ Fatui Langilangi (m) 48yrs	Sitou Kasa	16m x 12m feleti Pule'anga maumau si'isi'i	150
38	Vela Kehe	Veitongo	28/04/2012 1900Hrs	Va'a Toloke (m)	Tutu tu'unga veve	Me'alele maumau, veve	150
39	Vela Kehe	Kolofo'ou (Peisi Tekisi Holitei)	30/04/2012 0355Hrs	Timote Fotu (m) 25yrs	'Ikai Fakapapau'i	Me'alele C 12195 maumau si'isi'i	1000
40	Vela Fale	Mataika (Vava'u)	01/05/2012 1409Hrs	Pasimi Uasi (m) 73yrs/ Mele Hingano Ngü (f) 34yrs	'Ikai Fakapapau'i	5.6m x 11.1m falenofu'anga maumau si'isi'i	50620
41	Vela Fale	Vaini (Kolisi Piula)	04/05/2012 0050Hrs	Siasi 'Ahoftu/ Kolisi Piula	Tü Fale	5.8m x 7m loki ako maumau si'isi'i	2500
42	'Ikai ha Vela	Popua	04/05/2012 2027Hrs	-	-	-	150
43	Vela Fale	Kolofo'ou (Hala Lelue)	05/05/2012 0456Hrs	Na'a Lemoto/ Valu Talivakaloa (m) 40yrs	Mofisi mei he tafu'anga afi	12m x 11m Falekai Saprina maumau si'isi'i	250
44	Vela Kehe	Kolomotu'a	05/05/2012 1049Hrs	Pule'anga Tonga	'Ikai Fakapapau'i	Fu'u Touhuni maumau kotoa	130
45	Vela Vao	Lafalafa	07/05/2012 1035Hrs	Pilini Tu'ipelehake/ Lesieli Namoa (m) 32yrs	Potupotu'i Sikaleti	Vao 'eka 'e 24	450
46	Vela Vao	Fatumu	07/05/2012 1824Hrs	Soloi 'Ata'ata (f) 52yrs	'Ikai Fakapapau'i	Vao	150
47	Vela Vao	Vaini	08/05/2012 1959Hrs	Hon. Ma'afu Tukui'aulahi (m) 58yrs	'Ikai Fakapapau'i	Vao pole 'e 30	100
48	Vela Vao	Ma'ufanga	09/05/2012 1959Hrs	Tomasi Fakataumai (m) 54yrs Tomasi .F	Tutututu	Veve , misini fo maumau, 'aisi maumau	3000

49	Vela Fale	Hala -'o - Vave	12/05/2012 0051Hrs	Sulieti Ha'unga (f) 55yrs/ Sione Lavulava (m) 48 yrs	'Ikai Fakapapau'i	17m x12m falenofu'anga maumau kotoa	92000
50	Vela Kehe	Ma'ufanga	12/05/2012 1104Hrs	FIMCO Limited/ Asia Pacific Limited	Kasa kapai 'uhila	Me'alele maumau	70
51	Vela Kehe	Nuku'alofa	18/05/2012 1622Hrs	Tasi Vikilani (m) / Kulisitofa Kalonihea (m) 31yrs	'Ikai Fakapapau'i	Veve	50
52	Vela Kehe	Pahu	19/05/2012 0942Hrs	Salesi Tohi (m) 49yrs	'Ikai Fakapapau'i	TD 27 maumau si'isi'i	250
53	Vela Fale	Makave	24/05/2012 0910Hrs	Tevita Kale (m) 77yrs 'Etueni Ikahihifo (m)/ Tonga Katoa (m) 37yrs	'Ikai Fakapapau'i	7.04m x 5.01m peito maumau kotoa	29305
54	Vela Fale	Fasi – moe – Afi	25/05/2012 2315Hrs	'Etueni Ikahihifo (m)/ Tonga Katoa (m) 37yrs	'Ikai Fakapapau'i	10.9m x 5m falenofu'anga maumau kotoa	24000
55	Vela Vao	Nualei	31/05/2012 1335Hrs	'Asitā Langi (m)/ Sione Mavaetangi (m) 56yrs	Tutututu	Vao 'eka 'e 3, 'ulu pata	450
56	Vela Fale	'Ohonua	31/05/2012 2300Hrs	Viliani Hausia (m) 68yrs	Te'elango	10ft x 8ft falenofu'anga maumau kotoa	2000
57	Vela Kehe	Lapaha	01/06/2012 1255Hrs	Kolio Vaka'uta (m) 42yrs	Tutututu	Veve , 'aisi maumau	50
58	Vela Vao	Mata – ki – 'Eua	02/06/2012 1217Hrs	Siasi Uesiliana Tau'atain 'o Tonga Kolisi Kuini Sälote	Tutututu	Vao 'eka 'e 8, ngoue manioko, 'ulu hopa, 'ulu talo	300
59	Vela Kehe	Kolofu'ou	02/06/2012 1550Hrs	Venusi Taumoepeau(m) 52yrs	Tutututu	Tu'unga veve 6m lölöa, 6m maokupu	50
60	Vela Kehe	'Isileli	03/06/2012 1106Hrs	Suia Manuapule/ Viliani Taulaki	'Ikai Fakapapau'i	Tu'ung veve	40
61	'Ikai ha Vela	Tofoa (Falemahaki Vaiola)	04/06/2012 0356Hrs	Pule'anga Tonga/ Potungae Mo'ui	'Ikai Fakapapau'i	Me'a ngaue Fakatokanga Vela	50
62	Vela Vao	Lafalafa	05/06/2012 1410Hrs	Pilini Tu'ipelehake Sioeli Ha'amea (m) 43yrs	Tutututu	Vao 'eka 'e 50	400
63	Vela Vao	Koulo	06/06/2012 1542Hrs	Viliani Molitika (m) 68yrs	Tutututu	Vao 'eka 'e 8	1500
64	Vela Vao	Tongoleleka	06/06/2012 1548Hrs	Kelepi Fotu	Tutututu	Vao 'eka 'e 4	2500
65	Vela Vao	Holopeka	06/06/2012 1945Hrs	'Inoke Lätü (m) 57yrs	'Ikai Fakapapau'i	Vao 'eka 'e ½	250
66	Vela Vao	Toloa	06/06/2012 2001Hrs	Lord Kalaniuvalu Kolisi Ko Tupou	'Ikai fakapapau'i	Vao 'eka 'e 4, 'ä pulu	350
67	Vela Fale	Fua'amotu	08/06/2012 0012hrs	Hon. Tu'ipelehake Moe'ilo Fakaulu (m) 57yrs	Te'elango	12m x 9m falenofu'anga maumau si'isi'i	300
68	Vela Kehe	Havelu Saafa	08/06/2012 0138Hrs	Sosaia Vaka (m) 70yrs Paula 'Ahome'e (m) 22yrs	Matu'utamaki	C12504 maumau kotoa	6000
69	'Ikai ha Vela	Nuku'alofa (Pangike Westpac 'a Tonga	16/06/2012 1515Hrs	Pule'anga 'a Tonga Pangikē Westpac 'a Tonga	Hu 'a e vai ki loto ki he detector	Me'a ngaue Fakatokanga Vela	50
70	Vela Vao	Mata – Ki – 'Eua	19/06/2012 1228Hrs	Kolisi Kuini Sälote Luahea Tupe (m) 42yrs	Tutututu	Vao	30
71	Vela Kehe	Houmakelikao	20/06/2012 1300Hrs	Siasi Tonga Tau'atina 'o Houmakelikao 'Automalu Tupou (m) 33yrs	Tafu valita	Musie 'eka 'e ½	120
72	Vela Kehe	Fasi – moe – Afi	21/06/2012\ 2025Hrs	Pule'anga Tonga Sefo Manilala	Tutu tu'ungaveve	Fu'u 'akau 'osi mate, popo, veve	250
73	Vela Vao	Malapo	23/06/2012 1447Hrs	'Etika Koka (m) 54yrs	'Ikai fakapapau'i	Vao 'eka 'e 3	150
74	Vela Vao	Tufumahina	25/06/2012 1403Hrs	Siaosi Tupou iv Tevita Tufui (m) 58yrs	Tutututu	Vao 'eka 'e 7	350
75	Vela Fale	Ha'afeva	26/06/2012 0930Hrs	<b>Pua Tonata (m) 81yrs (Mate) *Mate 'i he Vela Fale</b>	<b>Maama kalasini</b>	<b>14' x 24' falenofu'anga maumau kotoa</b>	<b>500</b>
76	Vela Vao	Folaha	26/06/2012 1312Hrs	Siaosi Likio (m) 52yrs	Tutututu	Vao 'eka 'e 6, 10 fu'u hopa, 20 fu'u niu	2500

77	Vela Vao	Kahoua	26/06/2012 1441Hrs	Misita Ma'u (m) 51yrs	'Ikai fakapapau'i	Vao 'eka 'e ¼	100
78	Vela Fale	Veitongo	28/06/2012 2225Hrs	Siosaia Tupoumalohi (m) 59yrs	'Ikai fakapapau'i	10.4m x 9.2m falenofu'anga maumau kotoa	50000
79	Vela Fale	Ma'ufanga	01/07/2012 0101Hrs	Posesi 'Anau (m) 62yrs Sosaia Moala (m) 75yrs	Tafu'anga haka	8.20m x 2.50m peito maumau si'isi'i	50
80	Vela Vao	Tofoa	02/07/2012 1454Hrs	Tevita Taumoepeau (m) 52yrs	'Ikai fakapapau'i	Vao 'eka 'e 2, lou'akau	250
81	Vela Kehe	Lapaha	06/07/2012 1708Hrs	'Enitolo Penitani (m) 35yrs Fa'one Takapu (m) 21yrs	Matu'utamaki	Me'alele L8201 maumau si'isi'i	250
82	Vela Fale	Fanga – 'o – Pilolevu	07/07/2012 1440Hrs	Sione Funaki (m) 47yrs	'Ikai fakapapau'i	11m x 9m falenofu'anga maumau kotoa	10000
83	Vela Vao	Kolovai (Liukava)	08/07/2012 1203Hrs	Siaosi Tupou vi	Tutu tu'ungaveve	Vao 'eka 'e 1	150
84	Vela Vao	Hu'atolitoi	09/07/2012 1430Hrs	Tikili Ma'umalanga (m) 42yrs	'Ikai fakapapau'i	Vao	350
85	Vela Vao	Fangale'ounga	11/07/2012 1446Hrs	Siaosi Tupou VI	Tutututu	Vao 'eka 'e 2	1000
86	Vela Vao	Hu'atolitoi	12/07/2012 1058Hrs	Viliami Sisifa (m) 44yrs	'Ikai fakapapau'i	Vao	850
87	Vela Vao	Fangale'ounga	12/07/2012 1518Hrs	Hefa Tauelangi	Tutututu	Vao 'eka 'e 2	1500
88	Vela Vao	Tatakamotonga	14/07/2012 1045Hrs	Mini Kanongata'a (f) 52yrs	'Ikai fakapapau'i	Vao 'eka 'e 1	130
89	Vela Vao	Hofoa	14/07/2012 1221Hrs	Saia Moehau (m) 64yrs	'Ikai fakapapau'i	Vao 'eka 'e 1	300
90	Vela Vao	Niutoua	14/07/2012 1253Hrs	Pilikimi Talia'uli (m) 80yrs	Tutu	Vao 'eka 'e 1	150
91	Vela Vao	'Ahau	14/07/2012 1340Hrs	Matangi Lei (m) 58yrs	Tutututu	Vao 'eka 'e 4, 'ulu niu	200
92	Vela Vao	Popua	14/07/2012 1459Hrs	Simione Tamale (m) 41yrs	Tutututu	Vao 'eka 'e 1, 'ulu lou'akau	1500
93	Vela Vao	Tofoa	14/07/2012 1630Hrs	'Atolofi Tu'ineau (m) 46yrs	'Ikai fakapapau'i	Vao 'eka 'e 1	200
94	Vela Vao	Hofoa	14/07/2012 1722Hrs	Kolonita Fineasi (f) 70yrs	'Ikai fakapapau'i	Vao 'eka 'e 2	250
95	Vela Vao	Pangaimotu	15/07/2012 1315Hrs	Lopeti Lauti (m) 54yrs Fatai Afungia (m) 79yrs	'Ikai fakapapau'i	Vao 'eka 'e 5, 'ulu niu	500
96	Vela Vao	Tufumahina	17/07/2012 1255Hrs	Siaosi Tupou iv	'Ikai Fakapapau'i	Vao 'eka 'e 7	300
97	Vela Vao	Mala'evakapuna Lupepau'u	18/07/2012 1527Hrs	'Asaloni Ngaluola (m) 53yrs	'Ikai fakapapau'i	Vao teau 'e 3, 'eka 6 , ngoue vanilla 'eka 'e 1	200000
98	Vela Vao	Nualei	19/07/2012 1428Hrs	Stone Tonga (m) 30yrs Siaosi Kailahi (m) 61yrs	Tutututu	Vao	350
99	Vela Vao	Nualei	19/07/2012 1507Hrs	Nai Palu (m) 74yrs Maikolo Tonga (m) 45yrs	'Ikai fakapapau'i	Vao	500
100	Vela Vao	Fua'amotu	20/07/2012 1243Hrs	Funaki Latai (m) 55yrs	tutu	Vao 'eka 'e 4, 'a pulu	350
101	Vela Kehe	Ma'ufanga	21/07/2012 1217Hrs	Sotiume Taufa (f) 37yrs	Kauleka va'inga 'aki e masi	Me'alele C11851 maumau kotoa	5050
102	Vela Vao	Koulo	25/07/2012 1804Hrs	Lie Fifita (m) 62yrs	Tutu veve	Vao 'eka 'e 5	100
103	Vela Fale	Houmakelikao	27/07/2012 0438Hrs	Wood Kalekale (m) 44yrs Tevita Loto'aniu (m) 13yrs	'Ikai fakapapau'i	4.5m x 10m (1 <sup>st</sup> floor), 4.5m x 7m (2 <sup>nd</sup> floor) falenofu'anga maumau kotoa	5000
104	Vela Fale	Pahu	25/07/2012 2337Hrs	Pakiti Paletu'a (f) 70yrs Matanga Takulua (m) 45yrs	Tafu'anga afi	4.6m x 4m peito maumau si'isi'i	500
105	Vela Kehe	Holonga	27/07/2012 2020Hrs	Tevita Misa Fifita (m)	Matu'utamaki	Me'alele L7979 maumau kotoa	3500
106	Vela Kehe	Liahona	28/07/2012 1943Hrs	Tonga Power Limited	Tui'i he C10502 'a e fu'u pou 'uhila	Pou 'uhila, uaea 'uhila	800
107	Vela Fale	Ma'ufanga	31/07/2012 2254Hrs	Tasimonia Liuono (m) 53yrs	Te'elango	8m x 6m peito maumau kotoa	800
108	Vela Kehe	Ha'akame	06/08/2012	Tupou Lavulavu (m)	Fakatu'upake	L8312 maumau si'isi'i	5000

			1656Hrs	49yrs Viliami Tupou (m) 21yrs			
109	Vela Kehe	Nuku'alofa/Mala'e Kula	07/08/2012 1334Hrs	Pule'anga Tonga	'Ikai fakapapau'i	Fu'u toa maumau si'isi'i	50
110	Vela Vao	Pangai/Ha'apai	07/08/2012 1709Hrs	Safi Hu'avi (m) 37yrs	'Ikai Fakapapau'i	Vao 'eka 'e 2, 'ulu pata, 'ulu siaine	1000
111	'Ikai ha Vela	Nuku'alofa/Tungi Colonnade	11/08/2012 1941Hrs	Siasi Uesiliana Tau'atina 'o Tonga	'Ikai Fakapapau'i	Me'a ngäue Fakatokanga Vela	50
112	'Ikai ha Vela	Nuku'alofa/Tungi Colonnade	12/08/2012 0419Hrs	Siasi Uesiliana Tau'atina 'o Tonga	'Ikai Fakapapau'i	Me'a ngäue Fakatokanga Vela	50
113	Vela Kehe	Kolofo'ou/Holiday Taxi	16/08/2012 1135Hrs	Lisiate Uata (m) 44yrs 'Emeliano Täkapu (m) 44	'Ikai Fakapapau'i	T4647 maumau si'isi'i	3000
114	Vela Fale	Kolomotu'a	17/08/2012 29Hrs	Paula Ve'ehala (m) 50yrs Veä Havili (f) 64yrs	'Ikai Fakapapau'i	17.5m x 9.2m falenof'anga maumau kotoa	4500
115	Vela Fale	Ma'ufanga	18/08/2012 1127Hrs	'Uluakisima Ma'u (f) 68yrs	Tutututu	17.4m x 7.8m falenof'ang maumau si'isi'i	300
116	Vela Vao	Pangai/Ha'apai	18/08/2012 1500Hrs	Sifa Hu'avi (m) 37yrs	Tutututu	Vao 'eka ½, 'ulu pata, 'ulu hopa, 'ulu siaine	1000
117	Vela Kehe	Fanga 'o Pilolevu	18/08/2012 2343Hrs	Finau Lea'aetalafo'ou (m) 59yrs Sulietu Tu'italau (f) 40yrs	Matu'utämaki	Me'alele L4295 maumau si'isi'i	1200
118	Vela Vao	Talasiu	20/08/2012 1256Hrs	'Ahio Falefä (m) 74yrs	'Ikai Fakapapau'i	Vao 'eka 'e 4	250
119	Vela Vao	Niutoua	21/08/2012 1400Hrs	Sione Valita (m) 54yrs Soane Hamala (m) 50yrs	'Ikai Fakapapau'i	Vao 'eka 'e 4, 8 fu'u niu, 6 fu'u pata	750
120	Vela Fale	Ma'ufanga	22/08/2012 1917Hrs	Lelea Tupou (m) 57yrs Julian Fenech (m) 34 yrs	Mama kasa mei he housi 'o e sitou kasa	7.9m x 7.3m falenof'anga maumau si'isi'i	120
121	'Ikai ha Vela	Nuku'alofa/ Palasi Fakatu'i	22/08/2012 1948Hrs	King Siaoisi Tupou VI	'Ikai Fakapapau'i	Me'a ngäue Fakatokanga Vela	80
122	Vela Vao	Kolonga	23/08/2012 1324Hrs	Sove Lauaki (m) 83yrs Tipiloma Lauaki (m) 42yrs	'Ikai Fakapapau'i	Vao 'eka 'e 4	250
123	Vela Vao	Ha'a-Vaka-'Otua	23/08/2012 1500Hrs	Ma'ake Tupou (m) 36yrs	Tutututu	Vao 'eka 'e 2, 'ulu niu	250
124	Vela Vao	Pelehake	24/08/2012 1339Hrs	Tevita Kaufusi (m) 39yrs	Fei'umu	Vao 'eka 'e 4, ngoue hiapo	500
125	Vela Fale	Talasiu	27/08/2012 0925Hrs	'Otinili Folau (m) 47yrs	'Ikai Fakapapau'i	7m x 6.3m falenof'anga maumau kotoa	8000
126	Vela Vao	Pangai/Ha'apai	27/08/2012 1150Hrs	Vili Tu'avao	'Ikai Fakapapau'i	Vao 'eka 'e 16, hopa, pata, kape, manioke	2000
127	'Ikai ha Vela	Tofoa/ Falemahaki Vaiola	27/08/2012 1427Hrs	Pule'anga Tonga Potungäue Mo'ui	'Ikai Fakapapau'i	Me'a ngäue Fakatokanga Vela	50
128	Vela Vao	Lavengatonga	28/08/2012 1357Hrs	Mohelika Hafoka (m) 37yrs	'Ikai Fakapapau'i	Vao 'eka 'e 3, 1 fu'u niu, 'a pulu (40m)	300
129	Vela Vao	Tatakamotonga	28/08/2012 1529Hrs	Sione Tuiono Kamaloni Siuma (m) 67yrs	Tutututu	Vao 'eka 'e 5, 15 fu'u hiapo, 8 fu'u lesi	200
130	Vela Fale	Feletoa	29/08/2012 1007Hrs	Lemeki Pouvalu (m) 27yrs	'Ikai Fakapapau'i	5.7m x 4.6m fale tuku'anga koloa maumau kotoa	500
131	Vela Vao	Pangai/ Ha'apai	29/08/2012 1048Hrs	Viliami Fä (m) 84yrs	Tutututu	Vao pole 'e 30, pata, mei	250
132	Vela Vao	Haveluloto	01/09/2012 1224Hrs	Toli Manupule Sete Tupou (m) 30yrs	Tutu	Vao 'eka 'e 4, 'ulu niu, 'ulu siaine	500
133	Vela Vao	Folaha	01/09/2012 1409Hrs	Timote Lehä Naulivou Taufä (m) 50yrs	Tutututu	Vao 'eka 'e 6, 'ulu niu, 'ulu siaine	700
134	Vela Vao	'Utulau	01/09/2012 1412Hrs	Feleti Sevele Sinamoni Käuaka (m) 48yrs	Tutututu	Vao	50
135	Vela Vao	Mata –Ki-'Eua	01/09/2012 1619Hrs	Siaoisi Tupou vi Kaimana Läti (m) 50yrs	Tutututu	Vao 'eka 'e 2	50
136	Vela Vao	Hofoa	02/09/2012 1604Hrs	Mataele Moala	'Ikai Fakapapau'i	Vao , siaine, 'uluniu, 'ulu kofe, 'a Ocean of Light	900
137	Vela Vao	Ha'utu	03/09/2012 1115Hrs	Leuma Finau (m) 65yrs	Tutututu	Vao 'eka 'e 5, ngoue manioke	2500

138	Vela Vao	Hofoa	03/09/2012 1852Hrs	Sione Palu (m) 63yrs	Tutututu	Vao	100
139	Vela Vao	Mataika /Vava'u	04/09/2012 1345Hrs	Maile Kokohu (m) 64yrs Grey Carlson (m) 54yrs Brenda Manmancau (f) 49yrs	'Ikai Fakapapau'i	Vao 'eka 'e 2, 'ulu lou'akau, 'ulu hopa,, ngoue kava 'eka 'e 1	5000
140	Vela Kehe	Neiafu Tahī	05/09/2012 2221Hrs	Po'uli Vaki (m) 60yrs Sangster Saulala (m) 42yrs Lose Latapu (f) 62yrs	'Ikai Fakapapau'i	Fu'u fotulona 16m x 10.6m, 15.3m x 8m ongo falenofu'anga maumau kotoa, 8.5m x 4.6m falenofu'anga maumau si'isi'i	50 116500
141	Vela Fale	Lavengamalīe	07/09/2012 2050Hrs	Vainikolo Lāt:u Ikuna 'Alofaki (m) 25yrs	'Ikai Fakapapau'i	Tutututu	80
142	Vela Kehe	Mataika	08/09/2012 1924Hrs	Tapaita Moeaki (f) 86yrs	'Ikai Fakapapau'i	Fu'u Vavae 9.2m x 7.6m falenofu'anga maumau kotoa	70000
143	Vela Fale	Nukunuku	09/09/2012 0705Hrs	Pele Moimoi Tenisi Ma'afu (f) 37yrs Siuva Sivanathan (m) 60yrs (Indian)	'Ikai Fakapapau'i	15.3m x 5.3m falenofu'anga maumau kotoa	30000
144	Vela Fale	Longolongo	20/09/2012 0210Hrs	King Siasoi Tupou VI	'Ikai Fakapapau'i	Me'a ngāue Fakatokanga Vela	30
145	'Ikai ha Vela	Nuku'alofa/Palasi Fakatu'i	20/09/2012 0726Hrs	Pule'anga Tonga Pule'ana Tonga Tau Malu'i Fonua 'a Tonga	'Ikai Fakapapau'i	Fu'u Kaho, laine paipa vai	100
146	Vela Kehe	Vaipua /Vava'u	20/09/2012 1954Hrs	'Aisea Tu'itupou Manoa Tu'itupou (m) 56yrs	'Ikai Fakapapau'i	Tu'ungaveve 5.20m x 6.20m falenofu'anga maumau kotoa	4500
147	'Ikai ha Vela	Uafu Kuini Salote	20/09/2012 2100Hrs	Sione Fuataimi (m) 78yrs	'Ikai Fakapapau'i	9.1m x 3.1m peito maumau kotoa	300
148	Vela Fale	Tofoa	21/09/2012 0920Hrs	Tonga Power Limited	'Uha lahi	Fu'u pou 'uhila ki he 1.5", uaea 'uhila ki he 1m	50
149	Vela Fale	Houmelei/Vava'u	22/09/2012 1448Hrs	Salesi Tangataevaha	Tutu tu'ungaveve	Fu'u pua Tonga maumau si'isi'i	50
150	Vela Kehe	Haveluloto	26/09/2012 1908Hrs	King Siasoi Tupou VI Palatoni Tu'ungafasi (m) 75yrr Sifa Tu'ungafasi (m) 37yrs	'Ikai Fakapapau'i	Me'a ngāue Fakatokanga Vela	40
151	Vela Kehe	Feletoa	28/09/2012 1428Hrs	Viliani Falekaono (m) 54yrs	Tutu Veve	Vao 'eka 4, 'ulu hopa Vela tu'unga veve 'eka ¼	70
152	'Ikai ha Vela	Palasi Fakatu'i/Nuku'alofa	28/09/2012 1523Hrs	<b>T4944 Filimone Fifita (m) 69yrs Faka'uli: Lofakaitamaki Vatikani (m) 40yrs C15132 Losaline Lauhingo (f) 29yrs Driver: Losaline Lauhingo (f) 29yrs</b>	<b>Faka'uli Ta'etokanga Lele Lahi</b>	<b>T4944 maumau C15132 maumau *Mate mo e lavea</b>	<b>3000</b>
153	Vela Vao	Masilamea	09/10/2012 1355hrs	Pule'anga Tonga G.P.S Lapaha	'Ikai Fakapapau'i	Vao 'eka 1 24m x 13.6m, 9.8m x 4.5m falenofu'anga maumau kotoa	50 1.40000
154	Tu'unga Veve	Ma'ufanga	12/10/2012 1431hrs	Tekina 'Amanaki (m) 48 yrs Toni Fonua (m) 33yrs	'Ikai Fakapapau'i	Me'a ngāue Fakatokanga Vela	50
155	Vela Fale	Ma'ufanga	14/10/2012 0328hrs	Carl Sanft (m) 55yrs	'Ikai Fakapapau'i	Hon. Fielakepa Pule'anga Tonga	50
156	Vela Vao	Lapaha	13/10/2012 1121hrs	Potungau Vai 'a Tonga	Mama housi mei he tangike tisolo	Vao 'eka ¼ Misini Excavator maumau kongā	50 5000
157	Vela Fale	Ma'ufanga	19/10/2012 0905hrs	Prince Tupouto'a	'Ikai fakapapau'i	Vao 'eka 2, 'ulu hopa,	500
158	'Ikai ha Vela	Nuku'alofa	19/10/2012 1110hrs				
159	Vela Vao	Haveluloto	19/10/2012 1447hrs				
160	Vela Kehe	Tu'atakilangi/Hala Hihifo	20/10/2012				
161	Vela Vao	Tufumahina					

			1610hrs	Kolisi Kuini Salote		'ulu siaine, 'ulu pata	
162	Vela Vao	Ha'ateiho	23/10/2012 1443hrs	Kolisi Tonga 'Atele	'Ikai fakapapau'i	Vao 'eka ½	300
163	Vela Fale	Houma	23/10/2012 1552hrs	Sione L Mafi (m) 54yrs Viliami Tuinauvai (m) 73 yrs Saia Katoa (m) 28yrs	Faka'ahu namu	10.7 x 8m falenofa'anga maumau katoa 2.10.5m x 7.4m falenofa'anga maumau katoa	1. 40000  45000
164	Vela Kehe	Mangia	23/10/2012 1656hrs	Sina Guo (f) 32yrs Tu'iniua Palefau (m) 67yrs	'Ikai fakapapau'i	Me'alele J3755 maumau konga pe	100
165	Vela Vao	Tufumahina	24/10/2012 2142hrs	Tupou VI Lopeti Schaumkel (m) 62yrs	Tutututu	Vao 'eka 14	500
166	Vela Vao	Vaotu'u	30/10/2012 1907hrs	Siasi Uesiliana 'o Vaotu'u Minoneti 'Aukafolau (m) 65yrs	Tutututu	Vao 'eka 2, ¼ 'akau papa (paini), ½ 'eka ko e manioke	1500
167	Vela Vao	Vaotu'u	01/11/2012 1249hrs	Sione Tuionuku (m) 40yrs Tevita Teumohenga 26yrs	'Ikai fakapapau'i	Vao 'eka 4, 'ulu niu, fu'u mei, 'ulu'akau	650
168	Vela Vao	Kahoua	1/11/2012 1254hrs	Lisita Ma'u(m) 51yrs	Tutututu	Vao 'eka 11/2, 'ulu niu, 'ulu pata	500
169	Vela Fale	Fasi mo e Afi	5/11/2012 0524hrs	Sione Tu'ilotolava(m) 49yrs Steven Wang(m) 28yrs	'Ikai Fakapapau'i	14m x 7m falekai maumau pe konga	3000
170	Vela Vao	Kanokupolu	5/11/2012 1216hrs	Taniela Fie'eiki(m) 42yrs	'Ikai Fakapapau'i	Vao 'eka 1, 'ulu niu, fu'u mango 'e 1	250
171	Vela Kehe	Hala Taufa'ahau Mailletaha	6/11/2012 0749hrs	Paula Tu'itupou(m) 39yrs Faka'uli: Fiona Pahulu(f) 32yrs	'Ikai Fakapapau'i	Me'alele L11942 maumau pe konga	300
172	Vela Fale	Kolonga	8/11/2012 1615hrs	Falavalu Topani(m) 47yrs	'Ikai Fakapapau'i	11.65m x7.37m falenofa'anga maumau katoa	28000
173	Vela Fale	Pangai/Ha'apai	9/11/2012 1152hrs	Sione Tongia Uaisele Fono(m) 28yrs	'Ikai Fakapapau'i	27' x 22' dwelling fully destroyed	9500
174	Vela Kehe	Sopu/Hala Vuna	11/11/2012 0314hrs	Tonga Power Limited		L14661 partly damage, 1 electric post Vela vao	40
175	Vela Vao	Puke	12/11/12 1209hrs	Sione Nonu(m) 33yrs Taunaholo Fakatava(m) 61yrs	Tutu Tu'unga veve		50
176	Vela Fale	Houma	12/11/12 1616hrs	'Inoke 'Ete'aki(m) 42yrs	'Ikai fakapapau'i	10.40m x10.40 falenofa'anga maumau katoa	42000
177	'Ikai ha Vela	Nuku'alofa TDB	13/11/2012 0836hrs	Pule'ang Tonga Pangike Fakalalakala 'o Tonga	'Ikai Fakapapau'i	Me'a ngäue Fakatokanga Vela	60
178	Vela Fale	Sopu	15/11/2012 0235hrs	Lualala Lasike Seli Matakaiongo(m) 44yrs	'Ikai Fakapapau'i	11.50m x 7.40m falenofa'anga maumau katoa	30000
179	Vela Vao	Malapo	17/11/2012 1434dhrs	To'ofuhe Loketi(m) 78yrs	Tutututu	Vao 'eka 6, fu'u niu 'e 5	500
180	Vela Fale	Puke	17/11/2012 1758hrs	'Aholoka Tupou(m)43	Sitou Kasa	12.5m x11.8m falenofa'anga maumau katoa	70000
181	Vela Kehe	Ma'ufanga	18/11/2012 1941hrs	Maliepo Toma Moeaki(m) 40yrs	'Ikai fakapapau'i	Vela veve	50
182	Vela Vao	Longoteme	19/11/2012 1655hrs	Tivinia Misiloi(f) 74yrs	'Ikai Fakapapau'i	Vao 'eka 4	400
183	Vela Vao	Puke	21/11/2012 1258hrs	Owen Moala(m) 30yrs	Tutututu	Vao 'eka 8	500
184	Ngäue Makehe	Fua'amotu	22/11/2012 0946hrs	Ross Beljevich	Ngaue hala'aki Sipiliti Methylated	Falesima Laki MESUI (f) 37yrs vela si'isi'i hono sino	50
185	Vela Vao	Nualei	26/11/2012 1614hrs	Siaosi Puloka(m) 72yrs	Tutututu	Vao 'eka 1	80

186	Vela Fale	Pelehake	27/11/2012 2340hrs	Sepeti Finau(m) 83 yrs	Te'elango	Maumau loki mohe 'e taha	300
187	Vela Kehe	Kolofou'ou	28/11/2012 1316hrs	Tevita Soakai(m) 52yrs	'Ikai Fakapapau'i	Tava	100
188	Vela Fale	Houma	29/11/2012 0900hrs	Tevita Mafi(m)78yrs	'Ikai Fakapapau'i	Maumau kotoa e fale mo e koloa	85000
189	Vela Vao	Pelehake	30/11/2012 1728hrs	Tevita Siale(m) 41yrs	'Ikai Fakapapau'i	Manioke	350
190	Vela Fale	Fasi	01/12/2012 0117hrs	Siosifa F Latu(m) 52yrs	Faka'ahu namu	3.8m x2.9m falenof'anga maumau kotoa	1000
191	Vela Vao	Kolomotu'a	02/12/2012 0553hrs	Kuiniva Halou(m)47yrs	'Ikai Fakapapau'i	Vela Musie	30
192	Vela Vao	Nualei	01/12/2012 1557hrs	Siasi Pahai	'Ikai Fakapapau'i	Vao 'eka 16	200
193	Vela Vao	Nualei	09/12/2012 1314hrs	Meliame Lotaki(f)64yrs	Fei'umu mofisi	Pasi maumau, manioke, hopa	2000
194	Vela Vao	'Ahau	3/12/2012 1250hrs	Paula Ma'u(m)45yrs Tilila Fifita(f) 53yrs	Tutututu	Vao 'eka 3, ngoue manioke pea mo 'ulu niu	1000
195	Vela Vao	Nukunuku	3/12/2012 0958hrs	Lesoni 'Oliv(m)56yrs	Tutututu	Konga teuteu ki he ngoue'i	20
196	Vela Vao	Vaini	4/12/2012 1657hrs	Siasi 'o Tonga Vaini	'Ikai Fakapapau'i	40 sq meter	40
197	Vela Vao	Ha'akame	4/12/12 1538hrs	Molonai Finau(m)64yrs Siosaia Mateaki	Kei fakatotolo'i	Vao 'eka 5 mo e manioke	1500
198	Vela veve	Halaleva	5/12/2012 0846hrs	Siasi 'Ingilani Halaleva	Tutu	Veve	80
199	Vela Vao	Pelehake	5/12/2012 1421hrs	Viliani Hafoka(m)44yrs	'Ikai Fakapapau'i	Vao 'eka 6	200
200	Vela Vao	Tatakamotonga	5/12/2012 1658hrs	'Alipate Kaiongo(m)32yrs	'Ikai Fakapapau'i	Vao 'eka 4	180
201	Vela Fale	Houmakelikao	5/12/2012 1201hrs	Mosese Tau'uta Sopeta Vaiomo'unga(m)31yrs	Tutututu	Peito feime'akai maumau kotoa	1500
202	Vela Fale	Havelu	6/12/2012 0807hrs	Loise Veaf(f)71yrs Saia Veaf(m)40yrs	'Ikai Fakapapau'i	7.7m x 6.2m falenof'anga maumau kotoa	8500
203	Vela Kehe	Fasi	6/12/2012 1245hrs	'Ilaisa Young(f) 67yrs	Tutu tu'unga veve	Niu	50
204	Vela Kehe	Fanga	7/12/2012 1727hrs	Rodney Tu'inukuafef(m) 47yrs	Tutu tu'unga veve	'Ulu lou'akau	150
205	Vela Kehe	'Anana	10/12/2012 1912hrs	Sosaia Finau(m) 60yrs	Tutu tu'unga veve	Tu'unga veve	30
206	Vela Kehe	Makaunga	12/12/2012 1910hrs	Ma'u Fonokalafif(m) 79yrs	Tutu tu'unga veve	Fu'u toa	50
207	Vela Kehe	Houmakelikao	12/12/2012 1920hrs	Afred Soakai(m) 49yrs	'Ikai Fakapapau'i	Touhuni	50
208	Vela Vao	Longoteme	13/12/2012 0807hrs	Roman Catholic Longoteme	'Ikai Fakapapau'i	1 Me'alele (Pasi) Maumau kotoa	1000
209	Vela Vao	Fo'ui	13/12/2012 1338hrs	Siaola Fifita(m)63yrs	'Ikai Fakapapau'i	Manioke, niu	500
210	Vela Vao	Tatakamotonga	13/12/2012 1430hrs	Tolu Ha'angana (m) 61yrs	'Ikai Fakapapau'i	Vao	250
211	Vela Kehe	Fangaloto	13/12/2012 1612hrs	Ane Le'ota(f) 74yrs	'Ikai Fakapapau'i	'Ulu siaine	70
212	Vela Kehe	Lapaha	13/12/2012 1650hrs	Sonatane Takulua(m)40yrs	'Ikai Fakapapau'i	Veve	50
213	Vela Kehe	Popua	13/12/2012 2143hrs	Lakalaka Uele(m)40yrs	'Ikai Fakapapau'i	Me'alele L11691 maumau si'isi'i	3000
214	Vela Kehe	Fo'ui	14/12/2012 0917hrs	'Ofisa Kolo Fo'ui	Tutu tu'ungaveve	Fu'u Feta'u	50
215	Vela Vao	Havelu	20/12/2012 1308hrs	Kalini Kei(m)60yrs Maleponi Teutau(f)38yrs	'Ikai Fakapapau'i	Fu'u niu	100
216	Vela Fale	Ngele'ia	20/12/2012 1337hrs	Fotu Fisi'iahi(m)49yrs Siuaf Haveaf(m)59yrs	'Uhila	'Aofi mo e uaeaf 'uhila	2500
217	Vela Kehe	Holonga	19/12/2012 0513hrs	'Ilaisa Teaupaf(m)82yrs	'Ikai Fakapapau'i	Fu'u Toa	50
218	Vela Vao	Tatakamotonga	19/12/2012	Sela Ha'angana(f) 81yrs	'Ikai Fakapapau'i	Vao	60



			1145hrs	Mohe'ofa 'Osika(f)49yrs			
219	Vela Kehe	'Anana	19/12/2012 1300hrs	Savelio Vakaahi(m) 73yrs	'Ikai Fakapapau'i	Me'alele	700
220	Vela Vao	Kanokupolu	19/12/2012 1624hrs	Kelekele 'Akau'ola(m) 64yrs Havili Uta'atu(m)62yrs	'Ikai Fakapapau'i	Vao	150
221	Vela Vao	Houmakelikao	19/12/2012 1655hrs	Hon.Fakafanua	'Ikai Fakapapau'i	Vela musie he ve'ehala	40
222	Vela Fale	Ta'anea Vava'u	22/12/2012 0415hrs	Tevita Tameifuna(m) 85yrs	'Ikai Fakapapau'i	Maumau kotoa fale mo e koloa	4000
223	'Ikai ha vela	Hofoa	24/11/2012 2055hrs	Uasi Halasima(m) Hofoa	-	-	50
224	'Ikai ha vela	Tofoa	29/11/2012 0903hrs	Mumui Tatola(m)85yrs	Fetongi maka 'o e smoke alarm	Me'angaue Fakatokanga vela	50
225	'Ikai ha vela	Palasi FakaTu'i (Nuku'alofa)	29/11/2012 1610hrs	HM Tupou VI	'Ikai ngaue lelei	Me'angaue Fakatokanga vela	70
226	'Ikai ha vela	Veitongo	19/12/2012 1821hrs	Lunaeva Malapo	Palopalema fakatekinikale	Me'alele	70
227	'Ikai ha vela	Kolofo'ou	22/12/2012 1050hrs	Westpac Pangike 'o Tonga	Palopalema fakatekinikale	Me'angaue Fakatokanga vela	50
228	Vela Kehe	Ma'ufanga	26/12/2012 1144hrs	'Ana Tutoe(f) 47yrs	Palopalema misini	Me'alele L12351 maumau si'isi'i	100
229	Vela Vao	Lifuka Ha'apai	24/12/2012 1210hrs	Potungae Ako	Tutu tu'unga veve	Vesitapolo	200
230	Vela Fale	Niutoua	27/12/2012 2134hrs	Toetu'u Niutupuaa(m) 80yrs	'Ikai Fakapapau'i	Maumau kotoa fale mo e koloa	4500
231	'Ikai ha vela	Tofoa	30/12/2012 0525hrs	Mumui Tatola(m)85yrs	Palopalema fakatekinikale ki he smoke alarm	Me'angaue Fakatokanga vela	70
232	Vela Fale	Vaini	31/12/2012 2027hrs	Petuli Halatokoua(f) 43yrs	'Ikai Fakapapau'i	2 TV, sofa	1500
233	Vela Kehe	Ma'ufanga	31/12/2012 1658hrs	'Ifalemi Ma'u(m)45yrs	'Ikai Fakapapau'i	1 Me'alele maumau (maumau si'isi'i)	400
234	Vela Kehe	Ha'ateiho	31/12/2012 2027hrs	Hon. Tu'iha'ateiho(m)51yrs	'Ikai Fakapapau'i	Fu'u Toa	50