



TONGA FIRE & EMERGENCY SERVICES

FINANCIAL REPORT 2015/2016



FISCAL REPORT 2015/2016

Presented to Legislative Assembly in accordance to section 51 of the Act of Constitution of Tonga (Amendment) (No.2) Act No.20 of 2010.

I hereby submit my Report on the operations and activities of the Tonga Fire and Emergency Services for the Fiscal Year 2015/2016.

TFES Oath

"I solemnly swear before God and His Majesty King Tupou VI that I will righteously uphold the Constitution of Tonga and all Laws and Regulations which are currently or to be enforced in the future as a member of the Tonga Fire and Emergency Services. I pledge that I will serve the Government and the people of Tonga to the best of my ability and will strive to uphold the professional standards of the Tonga Fire and Emergency Services. I swear that I will not resign from Tonga Fire and Emergency Services unless in accordance with governing Laws and Regulations thereof"

TABLE OF CONTENTS

	Page
Letter to Chairman of Parliament	4
Letter to His Honourable Minister	5
Our Organisation	6
TFES Organisation Structure and Key Outputs	7
Our Aims	8
TFES Strategic Map	10
Organisational Structure	12
Administration and Statistics	13
Conference and Trainings (Overseas/Local)	18
Operational Activities	19
Emergency Response	23
Community Safety	24
Problems affecting the Services	26
Financial Reports	27
Conclusion	30
Appendix : Fire Incidents FY 2015-2016	31

Letter to Chairman of Parliament

14th October, 2016

Chairman of the Parliament
Lord Tu'ivakano
Parliament Office
Nuku'alofa

Your Excellency,

Pursuant to section 51 of the Act of Constitution of Tonga (Amendment) (No.2) Act No.20 2010, it requires that the Minister for Police shall provide to the Legislative Assembly with a report of the affairs of the Ministry of Police, Prisons & Fire Services for the previous year.

This document known as the Financial Report covers the operations and activities of the Tonga Fire and Emergency Service in detail for 2015/2016.

I have the privilege in presenting Your Excellency the Fiscal Report of the Tonga Fire & Emergency Services 2015/2016.

.....
Honourable Dr. Pohiva Tui'onetoa
Minister of Police, Prisons and Fire & Emergency Services

Letter to His Honourable Minister

Honourable Dr. Pohiva Tui'onetoa
Minister for Police, Prisons and Fire & Emergency Services

Your Honourable Minister,

I have pleasure in submitting to you the Fiscal Report of the Tonga Fire Services 2015/2016. The report highlights the Services performance in achieving its objectives and strategies during the Fiscal year.

However, I am proud to be the Fire and Emergency Commissioner of this Service and to work among dedicated firemen and woman. On behalf of all staff, I wish to acknowledge and appreciate the working relationship that we share with the Government of Tonga and the Government of South Australia. May we continue to work in unison for the benefit of people of Tonga.

Respectfully,

.....
Lofia 'i Vailahi Heimuli
Fire and Emergency Commissioner

Our Organisation

The Tonga Fire & Emergency Services (TFES) has been acknowledged for coordinating and carrying out proactive fire prevention and responding to fire and other emergency calls. We are committed to continuously improving the services that we provide to the community and the people in the Kingdom of Tonga. We aim to be recognised not just as an excellent emergency responder but also as an agency that reduces risks to the community that provides our people with the services they need, that is effectively managed and governed, and that provides excellent value.

The TFES Statement of Corporate Intent has been prepared and summarises the Services objectives for the period covered by the Corporate Plan. This new corporate plan of the Service – TFES is aligned with high level Government objectives including the TSDf II national outcome objectives. The TFES programmes and sub-programmes are designed to improve the functions and service delivery of the Service.

Currently there are a total of five (5) divisions which staffs operate under. They are:

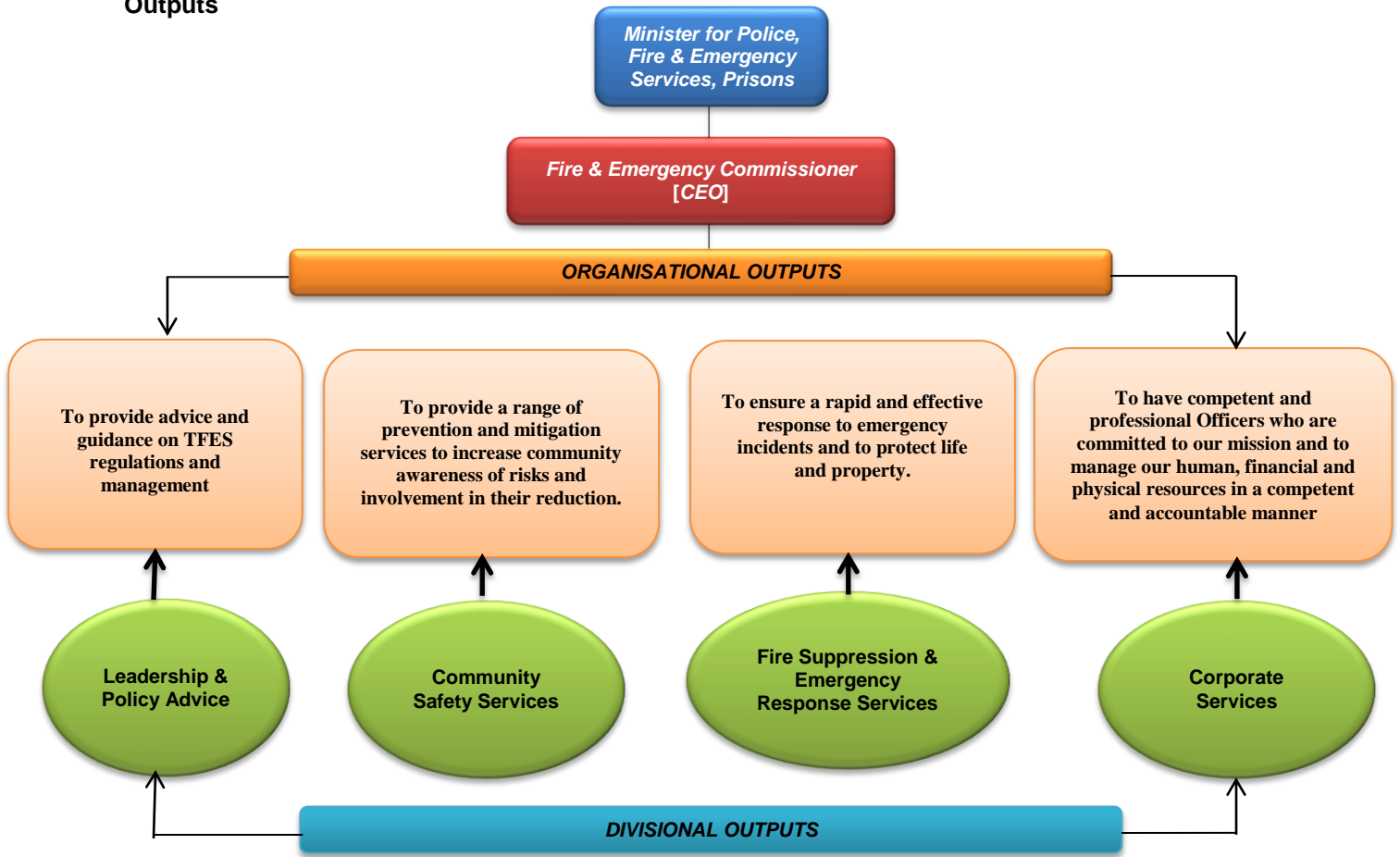
1. Administration & Corporate Services Division;
2. Training and Development Division;
3. Emergency Response Division;
4. Community Safety Division; and
5. Operations and Suppression Division.

In pursuant to the Corporate Plan 2015/2016 - 2017/2018 – these 5 divisions are broken down into four (4) sub-programmes for the purposes of operating its own budget for their expected project delivery.

The TFES primary purpose is to minimise the social, economic and environmental impact of fire and other emergencies in our community. This will be achieved through implementing strategies to develop community self-reliance to prevent and prepare for fires, supported by a timely and effective response to emergencies.

The TFES is also responsible for road accident rescue, natural disasters, managing incidents involving hazardous materials and undertaking urban search and rescue (USAR).

TFES Organisational Structure and Key Outputs



- | | | | |
|--|---|---|--|
| <ul style="list-style-type: none"> *For Minister and Commissioner to provide appropriate advice and guidance to Cabinet/Gov't on the management of Tonga Fire & Emergency Services *For the Minister to provide political direction and leadership to sub-programs/outputs * For the Commissioner to oversee the development, management, and implementation of TFES sub-programs and provide leadership to staff *For the Commissioner to execute appropriate, accurate and effective decision making | <ul style="list-style-type: none"> *To provide ongoing industry training in fire prevention and safety as per relevant sections of the Fire & Emergency Services Act * To provide training and awareness on emergency evacuation in built up areas and in multi- level buildings * To promote fire safety and prevention awareness and education program * That a fire safety and prevention awareness and education program is promoted * To provide ongoing training to build capacity in investigation processes, tactics, analysis and reporting | <ul style="list-style-type: none"> *To provide a well trained staff and specialised appliances and equipment to suppress fire or other emergencies *To maintain a high level of preparedness at all time through ongoing training and resource readiness to respond to emergencies within minimal timeframe *To put in place a command structure that will ensure effective & efficient response coordination and maintain chain of command within TFES during response and foster international collaboration in capacity building pertaining emergency response coordination and management *That all appliances including vehicles and equipment(s) are regular maintained and readily available for use | <ul style="list-style-type: none"> *To maintain, expand and ensure that all firefighters possess the appropriate operational competencies for the tasks they do and the risks they face. *The provision of transparent, accountable and timely financial and reporting functions *To develop and implement an accurate and timely Asset Management Plan for the ministry *To ensure that all staff positions are filled and staff members are well trained/motivated through the provision of opportunities to fulfill their potential capabilities *To ensure that administration & financial affairs are conducted with relevant government policies and all relevant statutory & legal requirements maintained and achieved *To develop and implement training programmes based on a need analysis and risk assessment. *To develop and implement specialist training in advanced competencies. * To establish a Fire & Emergency Services Training Academy in order to promote and to encourage full utilization to maintain fitness, skills and tactics |
|--|---|---|--|

Our Aims

Our Annual Aim:

“Ensuring Excellence in our Service Delivery”

Our Vision:

“A Safer and Happy Society”

Our vision is for a safer and happy society. We will contribute to this by working with the people to reduce deaths, injury and damage to property and the environment.

Our Mission:

“To Serve the Community”

We will achieve our vision by providing a modern Fire & Emergency Service by working with local communities, business and other agencies to reduce risks from fires and other emergencies. We will respond speedily and effectively to deal with fire and other emergencies and, if necessary, take calculated risks to save life and protect property and environment when the community depends on us to.

Our Values:

- Serving the communities of the Kingdom of Tonga;
- Being responsive to community needs; and
- Being progressive and delivering quality services

Professionalism:

- Dedication and pride in our organisation;
- Being skilled, efficient, committed and innovative;
- Using our collective capabilities to deliver and excellent service; and
- Being accountable for our actions.

Integrity:

- Being trustworthy and ethical;
- Treating each other fairly and honestly; and
- Having the courage to do the right thing

Consideration:

We value:

- Each other
- Working together to achieve our goals
- Treating each other with respect and understanding
- Being supportive, compassionate and helping each other

Who are we?

TFES is all about the people – our staff and the communities that we serve. TFES members not only serve the community, they are part of the local community. Community expectations are high and our focus is on front line service delivery through all stations to all Fire districts.

All 106 Commissioned and non-Commissioned officers are dedicated to working towards delivering the most proficient service possible with the overarching objective of achieving our vision and mission statements.

We continue to sharpen our focus on the frontline through “ensuring excellence in our service delivery” as part of our service delivery philosophy. This has merged our focus from our limited facilities to our senior management team with this single purpose. This is to ensure alignment of the entire Service on the front line, whether they are suppressing fires or educating the communities and people across the whole Kingdom of Tonga.

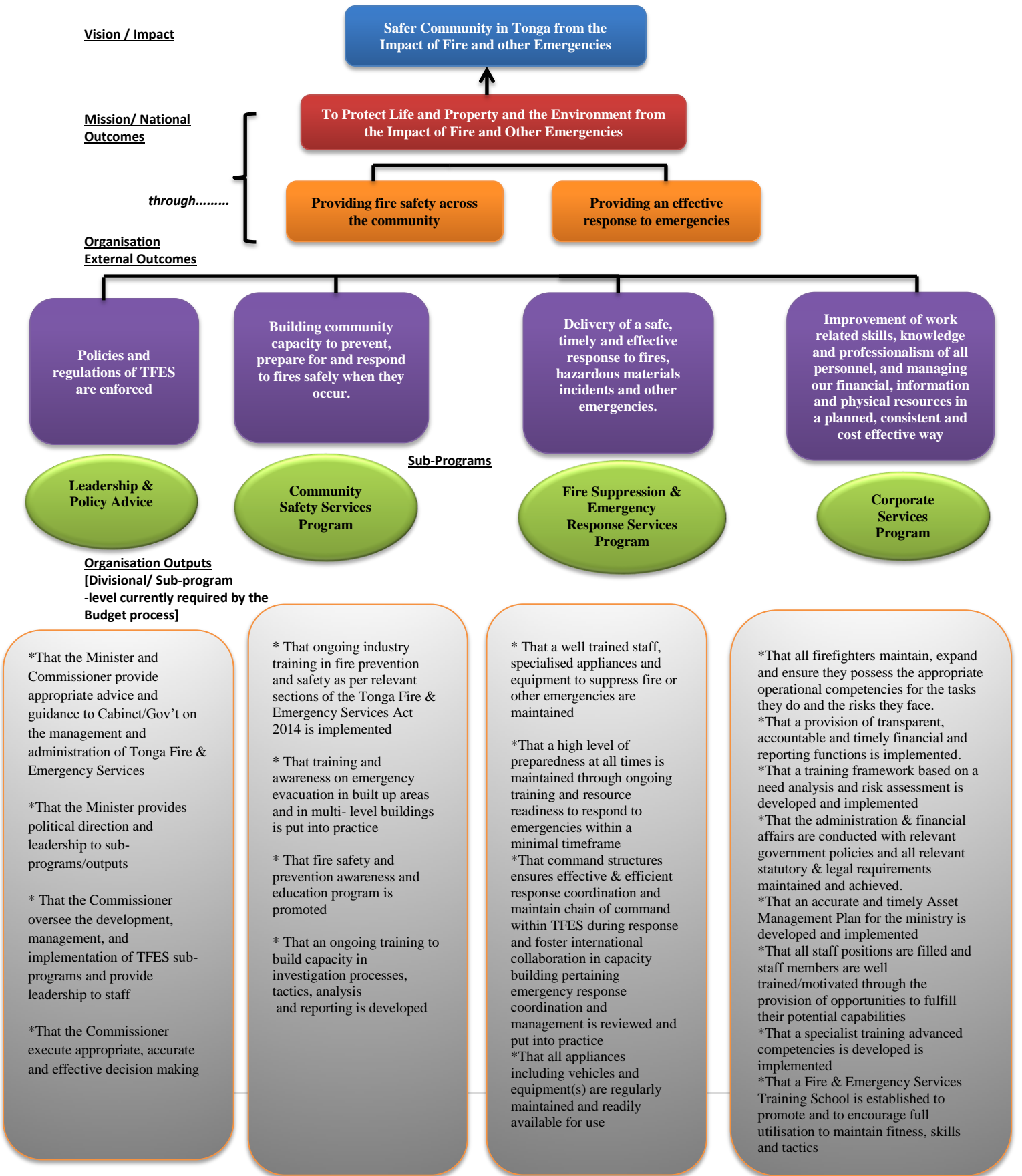
With the solidification of emergencies in our service delivery, the Services established an Emergency Response Division (ERD) which is made up of staff with specialised technical skills that would be of assistance in times of an emergency response.

Although we have five (5) divisions, these have been allocated across 4 Sub – Programmes which is illustrated on the ‘TFES Strategic Map’. The Strategic Map indicates our aims and missions and what we as a Service strides to deliver.

We aim to work cohesively with other emergency responders to further improve our interoperability. To achieve this, we are striving towards a common doctrine across emergency responder agencies that also deal with emergency response.

A new era has begun for the Services. We are not going to stop here, but rather work on a foundation to improve with each New Financial Year and each new challenge that the year may bring. By working together with the Government and people of Tonga, we can be the best service that we can be.

TFES Strategic Map



The TFES organisation structure is based on the type of function performed, classification of personnel employed in each division and the overlapping geographic factors.

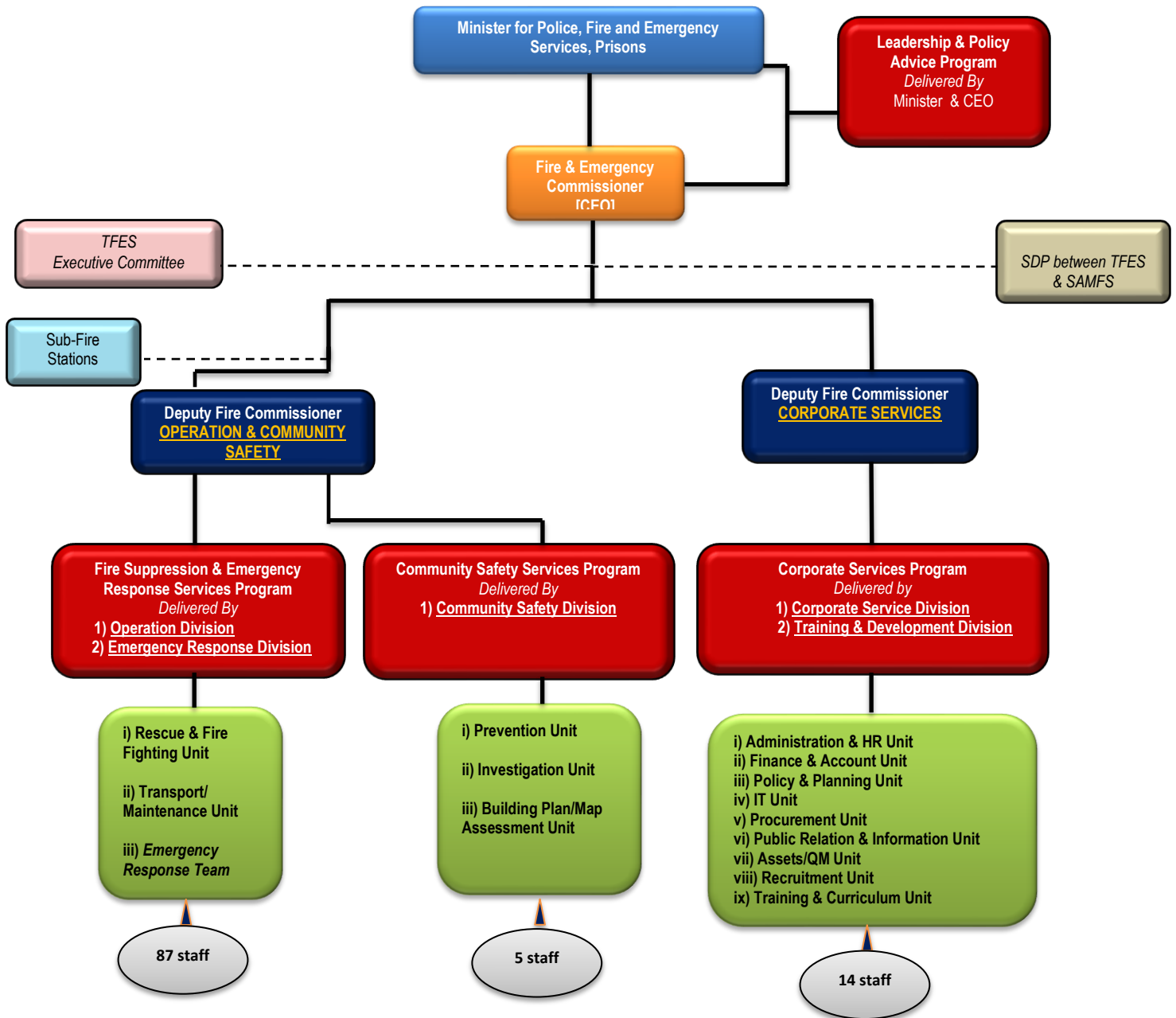
Ranks	Major Responsibilities
Minister for Police, Prisons, Fire Services	Overall Command
Fire & Emergency Commissioner	Responsible for the general efficiency of the Fire Service
Deputy Fire Commissioner	Responsible for the general efficiency of the operational and administrative duties
Fire Commander	Commanding Officers of Divisions
Assistant Fire Commander	Officer In-Charge of Stations and Units
Fire Officer	Second Officer In-Charge of Divisions and Units
Senior, Principal, Leading, Fire Fighter and Recruit Fire Fighter	Perform divisions, stations and units daily routine duties

The executive administration of TFES is led by the Minister for Police, Fire & Emergency Services, and Prisons and supported by the Fire and Emergency Commissioner. They hold external and internal responsibilities linked to the performance indicators. Externally, the Service's Executive Officers are responsible for supervising and providing appropriate advice and guidance on management of the Services.

Within the Service, the Minister is responsible for providing leadership and political direction necessary for the delivery of the Ministry's programs and sub-programs. The Fire and Emergency Commissioner manages the administration, development, and implementation of the Service's sub-programs and provides necessary leadership to the staff.

At the divisional level, each program is managed by a Fire Commander (Officer Commanding) whose performances are measured by respective divisional outputs.

Organisational Structure



Administration and Statistics

Honourable Dr. Pohiva Tui'onetoa served as Minister of Police, Prisons and Fire & Emergency Services since the year 2015.

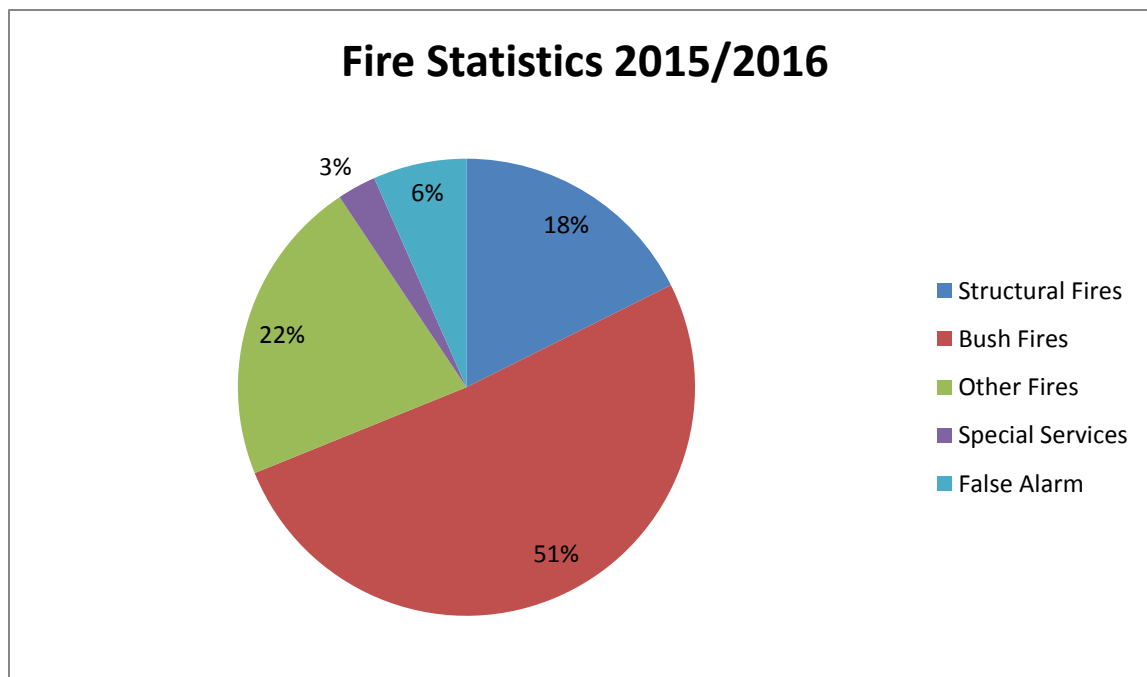
Fire and Emergency Commissioner, Heimuli.L is second in command and administrated the Service and had the responsibility for the general efficiency and daily operations throughout the year.

Staff & Strength as of 1st July 2015 - 30th June 2016

S/No.	RANKS	Nuku'alofa	Vava'u	Ha'apai	'Eua	Lapaha	Nukunuku	STRENGTH
1	Fire Commissioner	1	-	-	-	-	-	1
2	Deputy Fire Commissioner (DFC)	2	-	-	-	-	-	2
3	Fire Commander (FC)	5	-	-	-	-	-	5
4	Assistant Fire Commander (AFC)	6	2	1	1	1	-	11
5	Fire Officer (FO)	5	1	1	1	1	1	10
6	Cadet Officers (CO)	-	-	-	-	-	-	-
7	Senior Fire Fighter (SFF)	7	2	-	1	1	1	12
8	Principal Fire Fighter (PFF)	4	-	2	2	3	-	11
9	Leading Fire Fighter (LFF)	5	1	2	1	-	2	11
10	Fire Fighter (FF)	13	4	2	3	3	5	30
11	Recruit Fire Fighter (RFF)	11	-	-	-	1	1	13
12	Clerk	-	-	-	-	-	-	-
TOTAL		59	10	8	9	10	10	<u>106</u>

Fire Appliances

S/No	F/ Trucks & Vehicles	Nuku'alofa	Vava'u	Ha'apai	'Eua	Lapaha	Nukunuku	No. of Trucks & Vehicles
1	Fire-Fighting (Hino)	1	1	2	2	1	2	9
2	Fire-Fighting (Toyota)	-	-	-	1	1	-	2
3	Fire-Fighting (Isuzu)	2	1	-	-	-	-	3
4	Water Tanker	1	1	1	-	1	-	4
5	Fire-Fighting (International)	1	-	-	-	-	-	1
6	Sky jet	2	-	-	-	-	-	2
7	Daily Van	4	2	1	1	1	1	10
TOTAL		11	5	4	4	4	3	<u>31</u>



Fire and other incidents occurred in the FY 2015/2016

YEAR	FY 2015/16			TOTAL
Total No. of Fire & Other Incidents	362			\$
Type of Incidents	Structural Fire	64	17.6%	1,980,492.00
	Bush Fire	185	51.1%	55,255.00
	Other Fire	79	21.8%	103,865.00
	Special Services	10	2.7%	20,250.00
	False Alarm	24	6.6%	1,680.00
Incident By Districts	Nuku'alofa	221	61%	1,660,795.00
	Vava'u	11	3%	72,630.00
	Ha'apai	7	1.9%	31,100.00
	'Eua	7	1.9%	13,600.00
	Lapaha	62	17.1%	227,240.00
	Nukunuku	54	14.9%	380,380
Fatality	Three (3) in structural fire			
Estimated Loss	\$2,161,542.00			
Fire & Other Incidents Occurred by Months	Highest	October 2015 December 2015	49	13.5%
	Lowest	June 2016	10	2.7%

Comparison of Fire & Other Incidents

Fiscal Year	2012			2013			2014			FY 2015/2016		
Total No. of Fire and Other Incidents	234			319			406			362		
Type of Incident	Structural Fire	57	24.3%	Structural Fire	69	22%	Structural Fire	98	24.5%	Structural Fire	64	11%
	Bush Fire	92	39.3%	Bush Fire	120	48%	Bush Fire	191	47.4%	Bush Fire	185	30%
	Other Fire	58	24.7%	Other Fire	86	20%	Other Fire	83	20.3%	Other Fire	79	13%
	Special Services	2	0.85%	Special Services	6	2%	Special Services	10	1.4%	Special Services	10	2%
	False Alarm	25	10.6%	False Alarm	38	7%	False Alarm	24	6.8%	False Alarm	24	4%
Incidents by Districts	Tongatapu	203	86.7	Tongatapu	283	88.7%	Tongatapu	371	91.1%	Tongatapu	221	36%
	Vava'u	16	6.8%	Vava'u	12	3.7%	Vava'u	12	2.9%	Vava'u	11	2%
	Ha'apai	13	5.5%	Ha'apai	13	4.07%	Ha'apai	10	2.4%	Ha'apai	7	1%
	'Eua	2	0.85%	'Eua	11	3.4%	'Eua	14	3.4%	'Eua	7	1%

Promotions, Resignations and Retirement FY 2015-2016

In Financial Years 2015/2016, the Services had several internal promotions resulting from resignations, Retirement and Recruitment.

Promotions:

The Cabinet approved (CD No. 481, dated 11th May 2016) the promotion of the following staff member:

To Deputy Fire Commissioner

- 1- Fire Commnader 4 **KAUVAKA** Sinamoni Ika.

To Fire Commander

- 1- Assistant Fire Commander 11. **VA'ENUKU**, Tevita Moeakiola.

To Assistant Fire Commander

- 1- Fire Officer 26. **VEIKOSO**, Sione Uesile and Fire Officer 20. **TU'ITUPOU** Paula.

To Fire Officer

- 1- Senior Fire Fighter 33. **VAITAKI** Winston King and Senior Fire Fighter 31 **BAKER** Christopher Charles Tofua.

To Senior Fire Fighter

- 1- Principal Fire Fighter 39. **KAVA Sione Lapiuni** and Principal 51 **LANGI** Senituli.

To Principal Fire Fighter

- 1- Leading Fire Fighter 53. **TAUELANGI** Ma'asi.
- 2- Leading Fire Fighter 72. **TAKEIFANGA** Penisimani.

To Leading Fire Fighter

- 1- Fire Fighter 24 **NAITOKO** Fotu'aika;
- 2- Fire Fighter 85. **TA'UFO'OU** Siaosi Kaihau;

Resignations:

The following resignations were received and accepted by Cabinet:

1. CD No. 259, dated 18th March, 2016 – Fire Fighter 92. **MASALU** Falongo.
2. CD No. 530, 27th May, 2016 – Assistant Fire Commander 94 **VAIHU** Roman Lemisio with effective from 02/06/2016.
3. CD No. 531, dated 27th May, 2016 – Recruit Fire Fighter **TAUFA** Siosuia Mate Ki He Palomesi
4. CD No. 580, dated 10th June, 2016 – Leading Fire Fighter 82 **TU'ANGALU** Samisoni
5. CD No. 580, dated 10th June, 2016 – Fire Fighter 61 **FALETAU** Tevita Papani

Retirement:

The following Retirement was accepted by Cabinet:

1. CD No. 167, dated 24th February, 2016 – Deputy Fire Commissioner 2. **HUNI** Samuela with effective from 06/04/2016.

Retirement on Medical Ground:

The following Retirement on medical ground was accepted by Cabinet:

1. CD No. 363, dated 15th April, 2016 – Assistant Fire Commander 21 **VAKA** Siosaia Moheloa

Recruitment:

The following Recruitment was accepted by Cabinet:

1. CD No. 341, dated 8th April, 2016 – Recruit Fire Fighter **TAIONE** Oscar Minty Samuela Raymond Ning Fung with effective from 08/04/2016.
2. CD no. 481, dated 11th May, 2016 – Recruit **'OTULAU** Semisi and **'AHOKAVA** Tevita Falengameesi with effective from 11/05/2016.

Confirmation of Appointment:

The following Confirmation of Appointment was accepted by Cabinet:

1. CD No. 142, 18th December, 2015 – Fire Fighter 103 **TAMALE** Silivaai

Mateo, Fire Fighter 104
TU'UHOLOAKI Toakase, Fire
 Fighter 105 **LATAVAO** Melenaita
 Mercy Li'ekina Fakanonoa Ki Sene,
 Fire Fighter 106 **TUPOU** Samiu and
 Fire Fighter 107 **MAFI** Laukau Saafi
 with effective 22/10/2015.

Staff Movements

A total of 8 administration and operational staffs were transferred within fire stations (FS) and divisions. Staff movements during the year are detailed below:

<u>Date</u>	<u>Name</u>	<u>Station/ Division (From)</u>	<u>Station/ Division (To)</u>
23/07/15	LFF 72 Takeifanga. P	Operation (FS1)	DFC Operation Office (FS1)
10/08/15	PFF 48 Masalu. V	Operation (FS1)	Operation (FS2)
14/08/15	LFF 60 Finau. O	Operation (FS6)	Community Safety (FS1)
14/08/15	FF 86 Halahingano. S	Operation (FS1)	Operation (FS6)
02/09/15	AFC 13 'Ahofono. F	Corporate Services (FS1)	Operation (FS2)
10/09/15	FF 75 'Akimeta. V	Operation (FS1)	Asset/Quarter Master (FS1)
01/06/16	AFC 26 Veikoso. S	Operation (FS1)	Training & Development (FS1)
16/06/16	FF 106 Tupou. S	Operation (FS6)	Operation (FS2)

Conferences and Trainings (Overseas/Local)

The following Conferences and Training Courses were attended by TFES throughout the year.

Overseas Courses, Trainings and Workshop (Local):

- 1) **Assistant Fire Commander 13 'AHOFONO, Fakaului & Assistant Fire Commander 14 LOLO, Vili** attended the Tsunami training for fire responders held at NEMO, Nuku'alofa from 24th August – 27th August 2015
- 2) **Fire & Emergency Commissioner 01 HEIMULI, Lofia-'i-Vailahi** attended the Australian Fire Authorities Council Conference (AFAC) held at Adelaide, Australia from 31st August till 4th September 2015.
- 3) **Senior Fire Fighter 33 VAITAKI, Winston** attended workshop Public Sector Procurement from 7th March – 11th March 2016, Nuku'alofa.
- 4) **Deputy Fire Commissioner 02 TU'IMALAMAKA, Viliami** attended the Tonga Meteorology Policy Framework, Meteorology Bill Consultation for Government Ministries held at MEIDECC, Nuku'alofa
- 5) **Assistant Fire Commander 15 TU'IPULOTU, Owen & Fire Officer 33 VAITAKI, Winston** attended workshop Coordinated Incident Management System at Tonga Police Training College from 20th July – 21st July 2016.

Operational Activities

Tonga Fire & Emergency Services responded to a total of 362 emergency incidents during the FY 201/2016 which is a decrease by 116 incidents compared to the previous year.

These are categorised by the type of emergency incidents as shown below:

Comparison of Fire & Other Incidents

Fiscal Year	FY 2014/15			FY 2015/16		
Total No. of Fire and Other Incidents	478			362		
Type of Incident	Structural Fire	101	21.1%	Structural Fire	64	17.6%
	Bush Fire	243	50.8%	Bush Fire	185	51.1%
	Other Fire	99	20.7%	Other Fire	79	21.8%
	Special Services	14	2.9%	Special Services	10	2.7%
	False Alarm	21	4.3%	False Alarm	24	6.6%
Incidents by Districts	Nuku'alofa	296	61.9%	Nuku'alofa	221	61%
	Vava'u	14	2.9%	Vava'u	11	3%
	Ha'apai	13	2.7%	Ha'apai	7	1.9%
	'Eua	12	2.5%	'Eua	7	1.9%
	Lapaha	85	17.7%	Lapaha	62	17.1%
	Nukunuku	58	12.1%	Nukunuku	54	14.9%

Structural Fires: Of the total emergency incidents, 64 were for structural fires which are a decrease of 9% from the previous year. Structural fires include residential, commercial and industrial fires.

Bush Fire: A total of 185 calls for assistance for bush fires were responded to by the Services throughout the Kingdom of Tonga. Statistically speaking, 51.1% of all responses were attributed to bush fires.

Other Fires: These other fires cover fires attributed to rubbish heaps, electricity origins etc. A slight decrease of 20 fire calls when compared to the previous of 99 fire calls.

Special Services: There was a total of 10 special call outs responded to the Services. A slight decrease of 4 calls when compared to the previous FY 14 calls.

False Alarm: False alarm calls are classified as those of that are directly reported and been found later to be false. This includes electronic smoke alarm detection systems which through the process of ill maintenance are activated and the Services responds. The statistics show a 3 calls increase in comparison to the previous year.

Fire & Other Incidents Occurred in FY 2015/2016

YEAR	FY 2015/16			TOTAL
Total No. of Fire & Other Incidents	362			\$
Type of Incidents	Structural Fire	64	17.6%	1,980,492.00
	Bush Fire	185	51.1%	55,255.00
	Other Fire	79	21.8%	103,865.00
	Special Services	10	2.7%	20,250.00
	False Alarm	24	6.6%	1,680.00
Incident By Districts	Nuku'alofa	221	61%	1,660,795.00
	Vava'u	11	3%	72,630.00
	Ha'apai	7	1.9%	31,100.00
	'Eua	7	1.9%	13,600.00
	Lapaha	62	17.1%	227,240.00
	Nukunuku	54	14.9%	380,380
Fatality	Three (3) in structural fire			
Estimated Loss	\$2,161,542.00			
Fire & Other Incidents Occurred by Months	Highest	October 2015 December 2015	49	13.5%
	Lowest	June 2016	10	2.7%

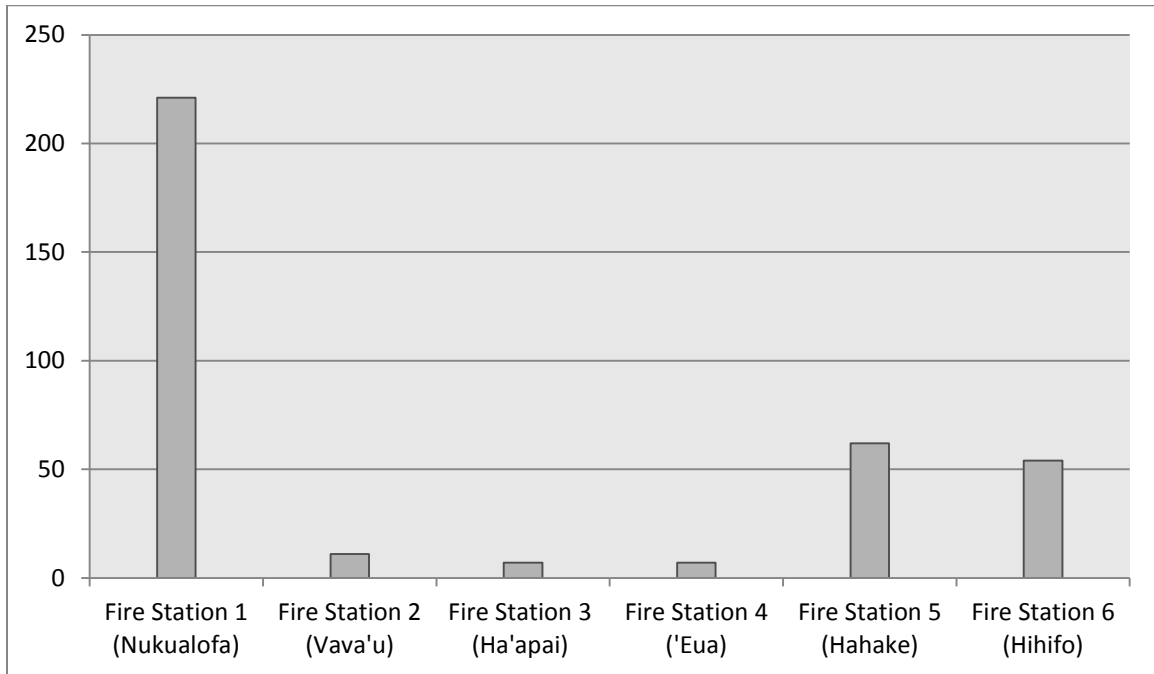
Estimated Losses by months for incidents – FY 2015/2016

No.	Months	Number of Fires/ Other Incidents Occurred	Estimated Loss (\$)
1	July 2015	40	155,650.00
2	August 2015	38	314,322.00
3	September 2015	25	79,980.00
4	October 2015	49	117,120.00
5	November 2015	35	461,770.00
6	December 2015	49	623,410.00
7	January 2016	45	182,360.00
8	February 2016	21	37,140.00
9	March 2016	18	29,735.00
10	April 2016	20	137,170.00
11	May 2016	12	12,465.00
12	June 2016	10	10,420.00
	TOTAL	362	2,161,542.00

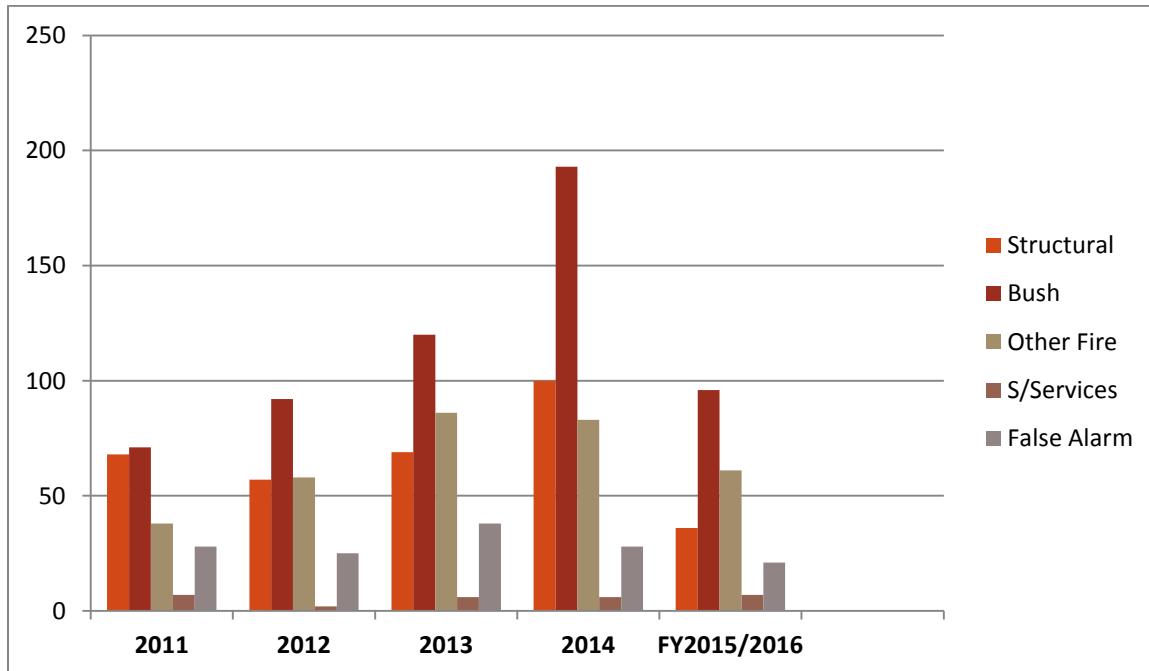
Fire & Other Incidents Responded By Fire Stations – FY 2015/2016

Stations Types of Incidents	Nuku'alofa	Vava'u	Ha'apai	'Eua	Lapaha	Nukunuku
Structural Fire	36	5	1	3	13	6
Bush Fire	96	3	4	2	40	40
Other Fire	61	3	2	2	4	7
Special Services	7	-	-	-	2	1
False Alarm	21	-	-	-	3	-
TOTAL	221	11	7	7	62	54
Estimated Loss						
Structural Fire	672,962	672,200	100,000	750	165,480	369,100
Bush Fire	20,275	600	2,050	1,200	20,460	10,670
Other Fire	69,625	250	150	100	33,150	590
Special Services	12,230	-	-	-	8,000	20
False Alarm	1,530	-	-	-	150	-
TOTAL	776,622	673,050	102,200	2,050	227,240	380,380
Fatality						
Structural Fire	1	-	-	-	1	1

Fire & Other Incidents Responded by Fire Stations FY 2015/2016



Comparison of Fire Incidents per year



As the statistics indicates, the Services were little busy responding to fire calls across the nation in past year. They were decrease on every types of fire, exclude false alarm was increase.

Despite the record high numbers of responses to fire incidents, the Operations and Suppression division were also busy in the community conducting safety drills with the relevant stakeholders.

Emergency Response

After being established on September 4th 2013, the Emergency Response Division was into action throughout of financial year 2015/2016.

1) Flood mitigation at Tongataeapa & 'Atenisi area.

Month of June 2016, Tongatapu experienced major rainfall. As a result, Tongata'eapa/'Atenisi, Kolomotu'a area experienced flooding. This is a low laying area and so the floods dampened homes making this area inaccessible to the residents of the area.

In collaboration with the National Emergency Management Office (NEMO), the Emergency Response Team together with NEMO set up Flood Mitigation Operations to the area by transporting the excess water to the nearest sea.

Pumps and hoses (extending several hundered metres) were set up transporting all excess water from the area to the water front at Sopu coast line.



ERT at Tongataeapa Flash Floods Mitigation works

Community Safety

The Community Safety Division is our outreach Division that prides itself in delivery fire prevention messages through their various programmes to the community. These programmes comprises of:

- Lectures;
- Demonstrations;
- Evacuation exercises;
- Television and radio programmes
- Community visits;
- Rural visits; and
- School visits.



Fire Safety Program



Demonstration to CCECC Ltd



Fire Fighter Kavakava carrying out Fire Safety August 2016



Kindergarten Fire Safety Programme

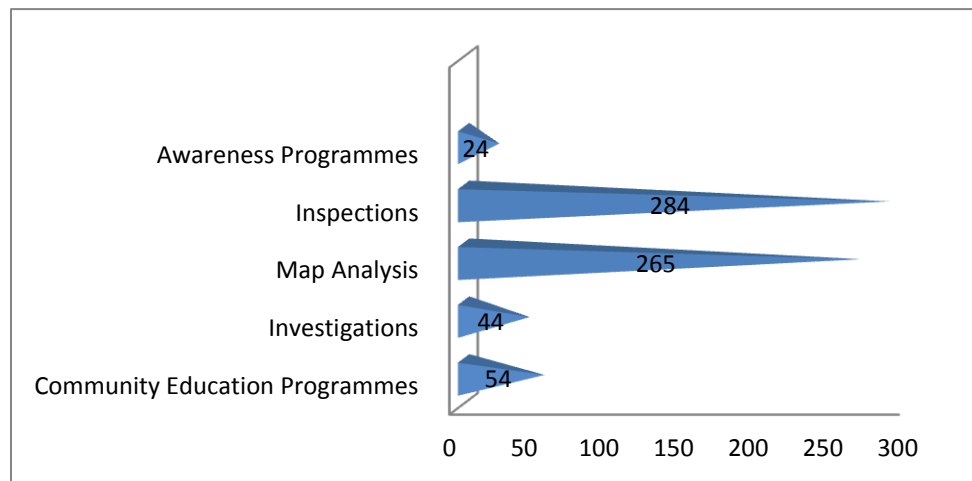
Fire Safety Inspection

Inspections to businesses and industrial premises are one of the key functions of the Community Safety Unit. A total of 284 inspections were carried that increased from only 194 from previous year. The statistics for inspections is dependent on business and industrial premises requesting inspections including the outer islands.

A total of 265 maps including both commercial and private buildings were submitted to Tonga Fire & Emergency Services for fire safety examination prior to being issued a building permit in pursuant to the Building Code.

In collaboration with Town officers in the Community, the Division was able to successfully deliver Fire Safety program called Door to Door. This program has to enter every single household at every single town from East to West to deliver Fire Safety message for the entire Tongatapu. Up now there were over than 1559 household were rich by the staffs.

The graph below shows a summary of the activities completed by the Community Safety Division for the fiscal year 2015/2016.



Problems affecting the Service

The following have been identified as areas that affect the delivery of our Services. They are but not limited to:

- Insufficient manpower;
- Lack of reticulated water or physical water supplies for firefighting purposes in small villages;
- Lack of functioning water hydrants across the Nuku'alofa region;
- Delayed reporting of fires from fire scene;
- Lack of street names for easy identification of the fire scene;
- Lack of technical gadgets for when calls for assistance are made;
- Remoteness of over villages from Fire Stations;
- Lack of firefighting equipment which includes hoses;
- Insufficient funds allocated by the Government for the effective administration and operation of the Services;
- Lack of vehicles for daily administrative operations;
- Lack of awareness of emergency number despite effective community programmes;
- Lack of building infrastructure available for Services; and
- Lack of Training facilities and equipment for Fire Fighters

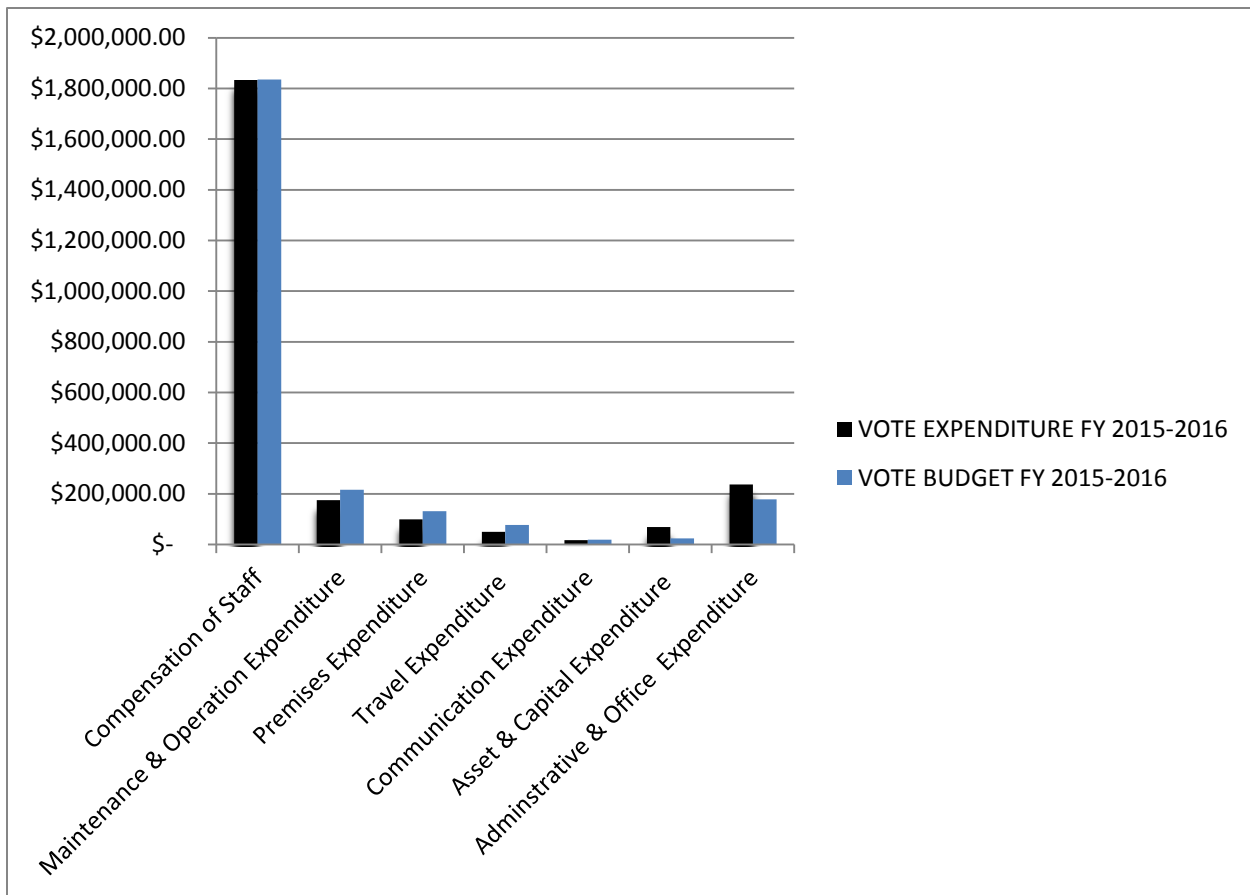
Financial Reports

The following Financial Reports covers the reporting period ending Financial Year 2015/2016.

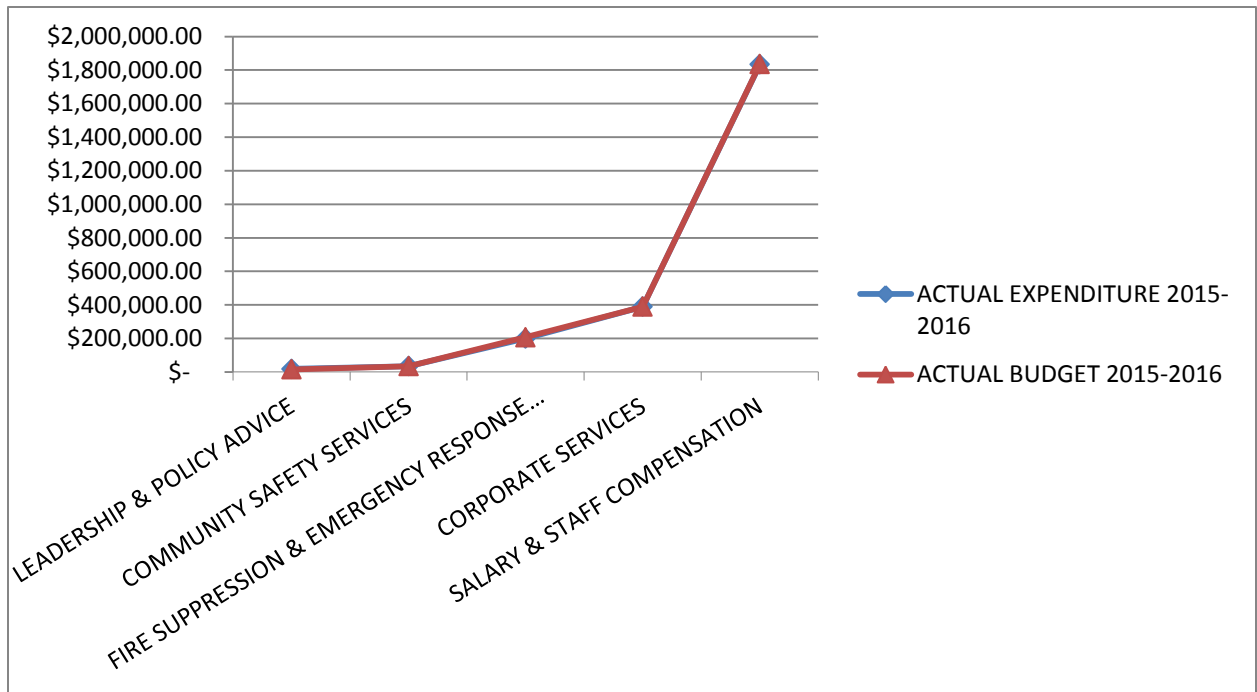
STATEMENT OF EXPENSES FOR YEAR ENDED 31st JULY 16.						
				\$	\$	\$
APPROVAL BUDGET FOR FINANCIAL YEAR 2015 - 2016						\$2,483,300.00
Compensation of Staff						
	Salaries			\$1,651,646.17		
	Government Contribution			\$ 163,120.49		
	Acting Allowance & Other Benefit			\$ 18,510.93	\$1,833,277.59	
Maintenance & Operation Expenditure						
	Maintenance of Vehicle			\$ 52,911.86		
	Maintenance of other Equipments			\$ 4,952.70		
	Fuel			\$49,820.93		
	Ration & Diets			\$66,330.97	\$ 174,016.46	
Premises Expenditure						
	Water			\$ 4,704.61		
	Maintenance of Compound			\$ 74,874.89		
	Electricity			\$ 19,179.16	\$ 98,758.66	
Travel Expenditure						
	Domestic Travel			\$ 42,075.98		
	Overseas Travel			\$ 7,021.90	\$ 49,097.88	
Communication Expenditure						
	Telecommunication Charge			\$ 8,440.10		
	Email and Internet			\$ 7,863.61	\$ 16,303.71	
Asset & Capital Expenditure						
	Technical Equipment			\$ 68,312.34	\$ 68,312.34	
Adminstrative & Office Expenditure						
	Office Supplies			\$ 17,452.05		
	Printing and Stationary			\$ 15,472.72		
	Broadcasting & Advertising			\$ 18,490.00		
	Freight			\$ 57,138.94		
	Uniforms			\$ 90,902.76		
	Licence			\$ 10,720.00		
	Others			\$ 25,849.23	\$ 236,025.70	\$ 2,475,792.34
Budget over Expenditure						\$7,507.66

VOTES EXPENDITURE vs VOTES BUDGET FY 2015 - 2016

VOTE ITEMS	VOTE	
	EXPENDITURE FY 2015-2016	BUDGET FY 2015-2016
Compensation of Staff	\$ 1,833,277.59	\$ 1,835,630.00
Maintenance & Operation Expenditure	\$ 174,016.46	\$ 216,849.83
Premises Expenditure	\$ 98,758.66	\$ 132,150.00
Travel Expenditure	\$ 49,097.88	\$ 77,000.00
Communication Expenditure	\$ 16,303.71	\$ 18,900.00
Asset & Capital Expenditure	\$ 68,312.34	\$ 24,335.00
Adminstrative & Office Expenditure	\$ 236,025.70	\$ 178,435.17
TOTAL	\$2,475,792.34	\$ 2,483,300.00



SUB PROGRAM vs BUDGET FY 2015 - 2016		
SUB PROGRAM	ACTUAL EXPENDITURE 2015-2016	ACTUAL BUDGET 2015-2016
LEADERSHIP & POLICY ADVICE	\$ 18,558.66	\$ 15,900.00
COMMUNITY SAFETY SERVICES	\$ 34,590.98	\$ 34,600.00
FIRE SUPPRESSION & EMERGENCY RESPONSE SERVICES	\$ 199,361.62	\$ 207,142.83
CORPORATE SERVICES	390,006.92	390,027.17
SALARY & STAFF COMPENSATION	\$ 1,833,277.57	\$ 1,835,630.00
	\$ 2,475,795.75	\$ 2,483,300.00



Conclusion

The Fiscal year 2015/2016 results have been satisfactory despite certain constraints which obstructed the advancement of the Service.

In general the Fire Statistics were on the slight decrease in comparison to previous years and we still do our best intentions and efforts to educate the general public about Fire safety awareness and prevention – we still cannot prevent fires from occurring. However, we are nonetheless still dedicated to spread fire awareness and prevention techniques.

Despite the many problems affecting the Services, I am never short of being surprised by the dedicated men and women that strive to deliver the most competent service while at the same time appreciating the limited resources that the Services has to operate.

I take this opportunity to thank our stakeholders and other Government departments for the working relationship throughout the financial year 2015/2016. Many things were made possible due to our interoperability. Special acknowledgment is due to the Government of South Australia and SAMFS for all their positive contributions for the development of the Service.

Thank you to the Minister – Honourable Dr. Pohiva Tui'onetoa for his support and guidance during this financial year.

Apologies are sought for any shortfalls on behalf of the Services.

.....
Lofia-'I-Vailahi Heimuli
Fire & Emergency Commissioner

Appendix

The following is a table showing all fire and other emergency calls made by the people of Tonga in FY 2015/2016

S/No	Types of Incident	Location	Date/Time Reported	Owner/Occupier	Probable Cause	Properties Involved	Estimated Loss (\$)
1	Other Fire	Tofoa	01/07/2015 1259Hrs	'Uliti Uata	Undetermined	Schaaf & grass	50
2	Bush Fire	Koloa	04/07/2015 2219Hrs	Kalo Taunauta	Undetermined	Coconut trees, bush fir 4 acres	150
3	Other Fire	Kolomotu'a	04/07/2015 2245Hrs	G.O.T	Undetermined	Fotulona tree	70
4	House Fire	Nukunuku	05/07/2015 0322Hrs	Viliani Tangimana	Undetermined	Dwelling fully destroyed 9.1m x 7.3m	25000
5	Other Fire	Kolofo'ou	06/07/2015 0141Hrs	Semisi Ongosia	Undetermined	Old boat was not used	40
6	False Alarm	Kolofo'ou (Taumoepeau Building)	09/07/2015 1227Hrs	Paula Taumoepeau	Smoke from steam of boiling water	-	50
7	Other Fire	'Utulei, Vv	10/07/2015 2305Hrs	Sioeli Filipe	Burning rubbish	Toa tree	150
8	House Fire	Ma'ufanga	10/07/2015 2358Hrs	G.O.T	Undetermined	2.5m x 1.9m	500
9	False Alarm	Kolofo'ou ('Api ko Fatai)	08/07/2015 2232Hrs	HSH Tu'ipelehake	Switch circuit	Alarm system	50
10	Other Fire	Matafonua	13/07/2015 1053Hrs	Paea Uata(m) 52yrs	Undetermined	Tiulipe tree	50
11	Bush Fire	Hala'ovave	04/07/2015 1340Hrs	Lord 'Ahome'e/'Okusitino Langi (m) 41yrs	Undetermined	Bush fire ½ acre	100
12	Other Fire	Vaini (Piula)	15/07/2015 0838Hrs	Sifa Tupou (m) 26yrs	Leak from petrol hose	Out on arrival	1500
13	False Alarm	Kolofo'ou (Taumoepeau Building)	16/07/2015 1344Hrs	Paula Taumoepeau (m) 55yrs	Dust	Reset alarm system	50
14	House Fire	Haveluliku	15/07/2015 2030Hrs	Vakehekehe Masima (m) 61yrs	Undetermined	Dwelling house fully destroyed 9.60m x 6.25m, *1 deceased	15000
15	House Fire	Fasi mo e Afi	17/07/2015 1433Hrs	Sitiveni Kami (m) 53yrs	Undetermined	Dwelling fully destroyed 12.36m x 10m Dwelling partly destroyed 13.4m x 9.10m	60000
16	Bush Fire	Kanokupolu	21/07/2015 1400Hrs	Puniani Vaitohi (m) 72yrs/Sunia 'Ungo'unga (m) 64yrs	Undetermined	Bush fire 2 acre	80
17	Bush Fire	Veitongo	21/07/2015 1500Hrs	Nauto Veikune	Undetermined	Bush fire ½ acre, 1 power pole	150
18	Bush Fire	Fua'amotu	22/07/2015 1340Hrs	Hopoate Lui(m) 61yrs/Sione 'Aso (m)71yrs	Setting Fire	Bush Fire	50
19	Other Fire	Ta'anea, Vv	22/07/2015 1901Hrs	Ma'u Sateki (m) 79yrs	Setting fire	Mango tree	50
20	Bush Fire	Nualei	23/07/2015 1132Hrs	G.O.T/MAFFF	Setting fire	Bush fire 1 acre	100
21	Other Fire	Pili	23/07/2015 1504Hrs	Susana Vaea (f) 50yrs	Undetermined	Wreck vehicle and rubbish	200
22	Other Fire	Vaololoa (Toutai Mana)	23/07/2015 1521Hrs	Roman Catholic Church	Setting fire to rubbish	Rubbish fire up to 27m x 13m	20

23	Bush Fire	Tofoa	23/07/2015 1853Hrs	Kisione Taufua (m) 44yrs	Undetermined	Bush fire 30 pole and 2 coconut trees	150
24	Bush Fire	Nualei	23/07/2015 2036Hrs	Lord Ma'afu/Tevita Filimoehala	Undetermined	Bush fire 1.5acre, 7 coconut trees	250
25	Other Fire	Pili	23/07/2015 2123Hrs	Feleti Hopoi (m) 81yrs/Susana Vaea (f) 50yrs	Undetermined	Rubbish fire 27m x 15m	100
26	Bush Fire	Kolovai	24/07/2015 1226Hrs	Funaki Luke (f) 78yrs	Undetermined	Bush fire, coconut trees	300
27	Bush Fire	Kolonga	24/07/2015 1630Hrs	Semisi Filikitonga (m) 76yrs	Undetermined	Bush fire, 3 coconut trees	150
28	Bush Fire	'Utulau	24/07/2015 2021Hrs	Siaosi Bourke/'Isileli Bourke (m) 31yrs	Undetermined	Bush fire 4 acres	200
29	Bush Fire	Te'ekiu	25/07/2015 1450Hrs	Soakai Motu'apuaka (m) 56yrs	Setting Fire	Bush fire 1.5acre, coconut trees	200
30	False Alarm	Kolofo'ou (Taumoepeau Building)	25/07/2015 2103Hrs	Paula Taumoepeau(m) 56yrs	Undetermined	Alarm system	50
31	Bush Fire	'Anana	26/07/2015 1358Hrs	Lord Fakafanua/Laki Tu'ifua	Undetermined	Bush Fire	50
32	Other Fire	Veitongo	26/07/2015 1758Hrs	Lemoto Lui (m) 38yrs	Undetermined	Mango tree, wreck vehicle	100
33	Bush Fire	'Utulau	27/07/2015 1501Hrs	Kinitoni Bourke	Setting Fire	Bush fire, coconut trees, cassava 4 acres	300
34	Bush Fire	Matahau	27/07/2015 1540Hrs	'Ilavalu Va'enuku (m) 70yrs/Fineasi Taholo (m) 52yrs	Setting Fire	Bush Fire 2 acres	50
35	Bush Fire	Nukunuku	27/07/2015 1747Hrs	Nalesoni Tu'uhoko(m) 86yrs	Setting Fire	Bush fire 1 acre	40
36	False Alarm	Kolofo'ou (Taumoepeau Building)	28/07/2015 0950Hrs	Paula Taumoepeau (m) 56yrs/Alekisanita Taumoepeau (m) 47yrs	Cooking	Alarm System	50
37	Bush Fire	Vaini	28/07/2015 1538Hrs	Hauliua Ve'a (m) 45yrs	Setting Fire	Bush Fire	100
38	House Fire	Folaha	31/07/2015 0834Hrs	Free Church of Tonga/Siosifa Naiului (m) 58yrs	Undetermined	19.9m x 20.3m dwelling fully destroyed	50000
39	False Alarm	Kolofo'ou (Taumoepeau Building)	31/07/2015 1920Hrs	Paula Taumoepeau (m) 56yrs/Alekisanita Taumoepeay (m) 47yrs	Cooking	Alarm system	50
40	Other Fire	Ma'ufanga	31/07/2015 2256Hrs	Lord Fakafanua	Undetermined	Rubbish fire	100
41	House Fire	'Utulau	02/08/2015 0258Hrs	Anau Lolohea (m) 58yrs/Muli Lolohea (m) 33yrs	Undetermined	8m x 5m dwelling fully destroyed	15500
42	Bush Fire	Veitongo	03/08/2015 1548Hrs	BSP Bank	Undetermined	Bush fire 4 acres, coconut trees	300
43	Bush Fire	Fanga (St. Andrew High School)	04/08/2015 1250Hrs	St. Andrew High School	Setting fire rubbish	Bush fire & rubbish	20
44	Bush Fire	Nautoka	04/08/2015 1304Hrs	'Apolosi Tonga (m) 42yrs	Setting Fire	Bush fire ½ acre	50
45	Bush Fire	Fo'ui	04/08/2015 1428Hrs	Mesui Fakateli (m) 46yrs	Setting Fire	Bush fire & fence	150
46	Bush Fire	Fo'ui	05/08/2015 1612Hrs	Fine Taukatelata (m)74yrs	Setting Fire	Bush Fire 1 acre	50
47	House Fire	Fua'amotu	05/08/2015 1723Hrs	Ilavalu Funaki (m) 70yrs/Vili Tahaafe (m) 35yrs	Setting Fire	8.6m x 4.9m hall	100
48	Bush Fire	Veitongo	06/08/2015 1119Hrs	G.O.T	Undetermined	Bush fire 2 acres, 1 paongo tree	100

49	Bush Fire	Lafalafa	06/08/2015 1135Hrs	HSH Tungi	Undetermined	Bush fire 1 acre	50
50	Bush Fire	Sia'atoutai	06/08/2015 1533Hrs	Vusika Helu (m) 69yrs	Undetermined	Bush fire, cassava, pata tree	250
51	House Fire	Ngele'ia	16/08/2015 1742Hrs	Viliani Tautua'a (m) 59yrs	Setting fire to rubbish	21m x 15m dwelling partly destroyed	40162
52	Other Fire	Pili	07/08/2015 1320Hrs	Alifeleti Palavi (m) 96yrs/Sione Maile (m) 53yrs	Undetermined	Rubbish fire 25m x 10m, wreck vehicle	150
53	Bush Fire	Ha'alalo	07/08/2015 1459Hrs	Lousa Maloni (m) 40yrs	Undetermined	Bush fire 4 acres, coconut trees	250
54	Other Fire	Tofoa	07/08/2015 1620Hrs	Esafe Fevaleaki (m) 79yrs	Setting fire to rubbish	Bush fire, banana trees	30
55	False Alarm	Kolofo'ou (Taumoepeau Building)	07/08/2015 1926Hrs	Paula Taumoepeau (m) 56yrs	Undetermined	Alarm system	50
56	Bush Fire	Nualei	08/08/2015 1258Hrs	Siaosi Pahulu(m) 71yrs/Moses Fakatou(m) 71yrs	Setting fire	Bush fire 3 acres	80
57	False Alarm	Kolofo'ou (Taumoepeau Building)	08/08/2015 1926Hrs	Paula Taumoepeau (m) 56yrs	Undetermined	Alarm system	50
58	House Fire	Tatakamotonga	10/08/2015 2012Hrs	Heneli Tupou	Mosquito coil	3.44m x 2.95m dwelling partly destroyed	300
59	Other Fire	Ngele'ia	12/08/2015 1100Hrs	Halamehi Pousini (f) 72yrs	Setting fire to rubbish	Ifi tree	50
60	House Fire	Matalikufisi	13/08/2015 0756Hrs	Ului Tokai (m) 62yrs	Candle	8m x 6m dwelling fully destroyed	4000
61	Bush Fire	Loto Ha'apai	13/08/2015 1947Hrs	T.C.C	Undetermined	Bush fire, fence	100
62	Bush Fire	Kolonga	14/08/2015 1530Hrs	FWC Kolonga/Sione Taufa (m) 55yrs	Setting fire	Bush fire 2 acres	100
63	False Alarm	Kolofo'ou (Taumoepeau Building)	14/08/2015 1556Hrs	Paula Taumoepeau (m) 56yrs	Reset alarm	Alarm system	50
64	Bush Fire	Tofoa	15/08/2015 1245Hrs	Lolesio Takai (m) 71yrs	Setting Fire	Bush fire 3 acres, 12 hopa tree	70
65	Bush Fire	Toloa	15/08/2015 1715Hrs	Etika Cocker (m) 57yrs	Undetermined	Bush fire 3 acres	50
66	Other Fire	Mailetaha	15/08/2015 1819Hrs	Lopeti Tohi (m) 76yrs/Onesi Masiu (m) 39yrs	Undetermined	Rubbish fire	50
67	House Fire	Havelu	19/08/2015 1057Hrs	Alepini Johanson/Paula Johanson (m) 52yrs	Kid plying with match	5m x 4m storage fully destroyed	1500
68	Bush Fire	Pelehake	19/08/2015 1524Hrs	Fatai Nu'uhiva (m) 65yrs	Setting fire	Bush fire 2 acres	50
69	False Alarm	Nuku'alofa (Royal Palace)	19/08/2015 2350Hrs	HM King Tupou VI	Undetermined	Alarm system	60
70	Other Fire	Neiafu, Vv	21/08/2015 1212Hrs	Lolo Sanft	Setting fire to rubbish	Bush , rubbish	50
71	Bush Fire	Vaini	22/08/2015 1240Hrs	Lord Ma'afu	Undetermined	Bush fire 1 acre	100
72	Bush Fire	Leimatu'a, Vv	22/08/2015 1525Hrs	Nafe Kuila (m) 52yrs	Setting fire	Bush fire	150
73	Bush Fire	Tofoa	22/08/2015 1554Hrs	Siosaia Talau (m) 38yrs	Setting fire	Bush fire 30 pole	50
74	Bush Fire	Puke	22/08/2015 1720Hrs	Feleti Moala (m) 60yrs	Setting fire	Bush	50
75	Other Fire	Kolomotu'a (Telekava Cemetery)	22/08/2015 2245Hrs	Tonga Powe Ltd	Hit by vehicle J1571 the power pole	Electrical wire	50
76	False Alarm	Kolofo'ou (TDB Bank)	26/08/2015 2315Hrs	G.O.T	Boiler	Alarm system	50
77	House Fire	Kahoua	30/08/2016	Sione Tu'alau Vimahi	Undetermined	20m x 30m	250000

			0631Hrs	(m) 76yrs		dwelling fully destroyed	
78	Bush Fire	Pea	31/08/2015 2100Hrs	Lord Lavaka Ata	Undetermined	Bush fire 4m x 8m	100
79	Other Fire	Kolomotu'a	01/09/2015 1250Hrs	Limoni Malia (m) 44yrs	Setting fire	Rubbish, wrecked vehicle	100
80	Bush Fire	Holonga, Vv	01/09/2015 1326Hrs	Saimone Pupunu (m) 41yrs/Sunia Lolo (m) 47yrs	Undetermined	Bush fire 8 acres, hopa tree	300
81	Bush Fire	Fangaloto	01/09/2015 1356Hrs	Sisi Tonga (m) 62yrs	Setting fire	Bush fire 1 acre	150
82	House Fire	Mata'aho, 'Eua	01/09/2016 1746Hrs	Paula Misa (m)56yrs/Mote Vai (m) 50yrs	Fire place	3" x 4" kitchen fully destroyed	100
83	Bush Fire	Fatai	02/09/2016 1642Hrs	Isileli Kaho	Undetermined	Bush fire 4 acres, coconut trees	350
84	Bush Fire	Koulo, Hp	04/09/2015 1655Hrs	Viliami Molitika (m) 73yrs/ Tupou Paletu'a (m) 38yrs Viliami Kulita (m) 67yrs/Talai Mafi (m) 40yrs Sione Latu (m) 78yrs/Unaloto Mafi (m) 41yrs	Burn expired goods	Bush fire, coconut, lou'akau	700
85	False Alarm	Veitongo (Lunaeva Gas Station)	09/09/2015 1434Hrs	-	-	-	300
86	House Fire	Tokomololo	10/09/2016 0216Hrs	Havea Faiva (m) 39yrs	Candle	4.1m x 2.9m dwelling fully destroyed 5.66m x 4.65m dwelling under construction partly destroyed	4000
87	Bush Fire	Masilamea	10/09/2016 1750Hrs	Fuatapu Hakaumotu (m) 40yrs/Scholarship club	Undetermined	Bush fire	100
88	Bush Fire	Mata ki 'Eua	11/09/2015 1312Hrs	Sione Pouanga	Setting Fire	Bush fire, pata tree, coconut trees, cassava, mango tree	1000
89	Bush Fire	Kolomotu'a	11/09/2015 1831Hrs	Niulala Helu (m) 45yrs/Sisi'uno Helu (f) 43yrs	Undetermined	Bush fire 5m x 5m	60
90	House Fire	Tokomololo	13/09/2015 0103Hrs	Feofa'aki Tui'onetoa (m) 44yrs	Undetermined	2.9m x 2.6m kitchen fully destroyed	500
91	False Alarm	Fanga (SPBD)	13/09/2015 0924Hrs	-	-	-	20
92	House Fire	Ha'ateiho	13/09/2015 1014Hrs	Peseta Lino (m) 49yrs	Undetermined	6.3m x 4.3m storage fully destroyed	500
93	House Fire	Talafo'ou	13/09/2015 1728Hrs	Luseane 'Aisea (f) 70yrs	Fire place	9.2m x 8.9m dwelling fully destroyed	70000
94	House Fire	Malapo	16/09/2015 0850Hrs	Malapo Community (Water Pump)	Undetermined	4.4m x 3.1m partly destroyed	300
95	Bush Fire	Vaini	17/09/2015 1212Hrs	Ngu Vakalahi	Setting fire	Bush, coconuts	150
96	Bush Fire	Nualei	18/09/2015 1405Hrs	Bahai Faith/Etienne Dewilde (m) 35yrs	Undetermined	Bush fire	150
97	Bush Fire	Pangai, Hp	18/09/2015 1709Hrs	Tevita Finau (m) 62yrs	Undetermined	Bush fire 4 acres, coconut trees, loua'aku tree	500
98	Bush Fire	Lapaha	18/09/2015 1829Hrs	Nivaleti Melekiola (m)54yrs	Undetermined	Bush fire 4 acres	150

99	Bush Fire	Tatakamotonga	19/09/2015 1237Hrs	Tevita Fakatou (m) 75yrs	Undetermined	Bush fire 8 acres	100
100	Special Service	Havelu (Vaha'akolo Rd)	21/09/2015 0830Rhs	Lord Fielakepa	Strong wind	Tiulipe tree	50
101	Special Service	Fasi mo e Afi (Vuna Rd)	26/09/2015 0708Hrs	Tevita Tupou	Speeding, drunken and drive	Tow accident vehicle to the side	50
102	House Fire	Vaini	28/09/2015 0026Hrs	Sioeli Naitoko (m) 44yrs/Mafi Naitoko (m) 18yrs	Candle	2.4m x 2.2m house partly destroyed	350
103	Special Service	Lapaha	28/09/2015 0247Hrs	Hina 'Otuvaha (f) 44yrs	Take victim to the hospital suffer stomach ache	-	-
104	Bush Fire	Holonga	02/10/2015 1414Hrs	Hitikeli Tu'ipulotu (m) 41yrs	Undetermined	Bush fire	100
105	Bush Fire	Fahefa	02/10/2015 1628Hrs	Lord Ve'eheala	Undetermined	Bush fire 7 acres, 50 coconut trees, 60 paongo tree	700
106	House Fire	Vaini	03/10/2015 1632Hrs	Aisake Finau (m) 43yrs	Setting fire to beehive	40" x 30" dwelling partly destroyed	150
107	Bush Fire	Veitongo	03/10/2016 2005Hrs	G.O.T	Undetermined	Bush fire 1 acre	100
108	House Fire	Folaha	04/10/2015 0209Hrs	Kalo Kaumatule/Samuella Fakahau (m) 32yrs (deceased)	Undetermined	7.3m x 5.3m dwelling fully destroyed *1 deceased	4500
109	Bush Fire	Koulo, Hp	05/10/2015 1431Hrs	Samiu Vaitaki (m) 44yrs	Undetermined	Bush fire, kie, coconut trees	700
110	Other Fire	Kolovai	06/10/2015 1455Hrs	Mo'ale Fililava (f) 40yrs	Setting fire	3 kie tree	150
111	Bush Fire	Houma	07/10/2015 1720Hrs	Falakiko Ma'asi/Mateaki Ma'asi(m) 75yrs	Setting	Bush fire 4 acre	150
112	Bush Fire	Pelehake	08/10/2015 1500Hrs	Kitone Faingata'a (m) 66yrs	Setting fire to rubbish	Bush fire 8 acres, 56 banana trees, 37 bandanas	8900
113	Bush Fire	Malapo	08/10/2015 1555Hrs	Mafua Teaupa (m) 68yrs/Tatau Teaupa (m) 51yrs	Undetermined	Bush fire 1 acre	100
114	Bush Fire	Ha'akame	09/10/2015 1119Hrs	'Atunaisa Tongotea (m) 77yrs/Sione Vakapuna (m) 62yrs	Setting fire	bush fire 5 acres	200
115	Bush Fire	Longoteme	12/10/2015 0820Hrs	Huavai 'Ofa (f) 63yrs/Siosua Palu (m) 55yrs	Setting fire to rubbish	Bush fire	150
116	Bush Fire	Tofoa	12/10/2015 1113Hrs	Talaiasi Taufa (m) 52yrs/Keput Fehoko (m) 46yrs	Setting fire to rubbish	Bush fire 1 acre	50
117	House Fire	Veitongo	12/10/2015 1256Hrs	Haloti Taufa (m) 57yrs	Undetermined	8.7m x 12.3m dwelling partly destroyed	2500
118	Bush Fire	Fo'ui	12/10/2015 1328Hrs	Fine Taukatelata (m) 68yrs	Setting fire	Bush fire 1 acre	80
119	House Fire	Futu, 'Eua	13/10/2015 0320Hrs	Tomu Valeti (m) 34yrs	Setting fire to rubbish	Kitchen 5.5m x 3.8m fully destroyed	150
120	Bush Fire	Tufumahina	13/10/2015 1059Hrs	Fumaono Tu'ipulotu (m) 65yrs	Undetermined	Bush fire 3 acres, banana and hopa tree	500
121	Other Fire	Kolofo'ou	13/10/2015 1845Hrs	Luseane Meli (f) 76yrs/Melani Foster (f) 43yrs	Setting fire	Rubbish	60
122	Bush Fire	Havelu	14/10/2015 1316Hrs	Free Church of Tonga	Setting fire to rubbish	Bush fire	50

123	Bush Fire	Nualei	14/10/2015 1446Hrs	Viliani Kioa (m) 85yrs	Undetermined	Bus fire	100
124	Bush Fire	Nautoka	10/10/2015 1944Hrs	G.O.T	Setting fire to rubbish	Bush fire 1 acre, 2 tava trees	100
125	Bush Fire	'Utulau	17/10/2015 1322Hrs	Rev. Viliani Vimahi (m) 33yrs	Setting fire	Bush fire	250
126	Other Fire	Vaololoa (M.O.I)	17/10/2015 1345Hrs	M.O.I	Cook ash Feld	Rubbish fire 10m	400
127	Other Fire	Tofoa	17/10/2015 1927Hrs	Heamasi Likiliki (m) 44yrs	Setting fire	Rubbish fire	50
128	False Alarm	Niutoua	18/10/2015 1900Hrs	-	-	-	50
129	Other Fire	Tofoa	18/10/2015 2110Hrs	Pelekili Kafalava (m) 48yrs/Gabriel Kafalava (f) 25yrs	Accident	L15397 fully destroyed	15000
130	False Alarm	Kolofo'ou (Taumoepeau Building)	18/10/2015 2130Hrs	Paula Taumoepeau (m) 56yrs	Undetermined	-	100
131	Bush Fire	Pelehake	19/10/2015 1110Hrs	Lisiate Tupola (m) 46yrs	Setting fire rubbish	Bush fire 1 acre padlock	100
132	Bush Fire	Te'ekiu	19/10/2015 1357Hrs	Fonua Hakaumotu (m) 51yrs	Setting fire to rubbish	Bush fire ½ acre	50
133	House Fire	Veitongo	19/10/2015 2300Hrs	Saia 'Ahoia (m) 63yrs/ Kepueli Taufa (m) 37yrs	Undetermined	Dwelling fully destroyed	8000
134	Bush Fire	Pea	20/10/2015 1220Hrs	Lord Lavaka Ata	Undetermined	Bush fire 5 acres	150
135	Other Fire	Havelu	20/10/2015 1221Hrs	Viliani Kioa (m) 85yrs	Setting fire	Rubbish fire	50
136	Special Service	Fatumu	20/10/2015 1443Hrs	Makatisoni ma (m) 19yrs	Speeding	L15756 partly damage	8000
137	House Fire	Houmakelikao	21/10/2015 0712Hrs	Visesio Lino (m) 49yrs	Undetermined	3.10m x 3.80m fully destroyed	25000
138	House Fire	Hoi	21/10/2015 1544Hrs	Kalaleti Pese (f) 69yrs	Undetermined	11.60m x 9.20m dwelling fully destroyed	30000
139	Bush Fire	Hofoa	23/10/2015 1401Hrs	Sione Mapili (m) 64yrs	Setting fire	Bush fire, coconut trees	100
140	Bush Fire	Ha'ateiho	24/10/2015 1151Hrs	Sione Nalesoni (m) 63yrs	Undetermined	Bush fire 3 acres, 56 pine tree, 22 coconuts	2500
141	Other Fire	Pahu	24/10/2015 1331Hrs	Viviana Mahe (f) 67yrs	Undetermined	Rubbish fire	100
142	Bush Fire	'Utulau	24/10/2015 1600Hrs	Tevita Fakalata/'Etuata Pangata'a (m) 32yrs	Undetermined	Bush fire 1 acre	100
143	Other Fire	Ha'akame	25/10/2015 04449Hrs	Mafoa 'longi (m) 36yrs	Undetermined	Toa tree	80
144	House Fire	Talau, Vv	26/10/2015 1006Hrs	'Uto Pita (m) 35yrs	Electricity	9.9m x 6.6m dwelling partly destroyed	3000
145	Bush Fire	Liahona	26/10/2015 1248Hrs	Valu Niupalau (m) 42yrs	Undetermined	Bush fire 2 acres	100
146	Other Fire	Ma'ufanga	26/10/2015 1725Hrs	Lord Fakafanua	Setting fire	Rubbish fire	50
147	Bush Fire	Vaini	27/10/2015 1348Hrs	Beulah College	Setting fire	Bush fire 1 acre	100
148	House Fire	Ma'ufanga	29/10/2015 0203Hrs	Sione Foliaki (m) 30yrs	Undetermined	7.46m x 4.94m dwelling fully destroyed	3500
149	Bush Fire	Malapo	29/10/2015 1924Hrs	Beulah College	Setting fire	Bush fire 1 acre	100
150	Bush Fire	Vaini	30/10/2015 1703Hrs	Pousima Vaoleti (m) 45yrs/Samoa Mo'unga (m) 38yrs	Setting fire	Bush fire 30 pole	50
151	Bush Fire	Halaleva	31/10/2015 1231Hrs	Malakai Keti (m) 30yrs	Undetermined	Bus fire 1 acre, wrack vehicle	200

152	House Fire	Nuku'alofa, Vuna Rd	31/10/2015 1845Hrs	G.O.T	Undetermined	6m x 4.2m dwelling partly destroyed	400
153	Other Fire	Ma'ufanga	02/11/2015 0810Hrs	Manu Mataele(m) 50yrs	Undetermined	3 container & rubbish fire	400
154	Bush Fire	Haveluloto	02/11/2015 1543Hrs	Tevita Misa Fifita	Undetermined	Bush fire 3 acres, hopa & pata tree	200
155	Bush Fire	Ha'ateiho	02/11/2015 1706Hrs	Lisia Tu'avao (f) 61yrs/Kimi Niu'ila (m) 68yrs	Setting fire	Bush fire 2 acres	100
156	Bush Fire	Maui	02/11/2015 1913Hrs	Kuniva Hurrel (m) 49yrs	Undetermined	Bush fire 1 acre	100
157	Other Fire	Fangaloto`	02/11/2015 2322Hrs	Tonga Power Ltd	Undetermined	Electrical wire	50
158	False Alarm	Longolongo	03/11/2015 2354Hrs	-	-	-	-
159	False Alarm	Fua'amotu Hospital	05/11/2015 0955Hrs	M.O. H	Battery too old	Alarm system	50
160	House Fire	Hihifo, Hp	06/11/2015 1030Hrs	Sopusopu Faletau/Seventh Day Adventist	Undetermined	24m x 16m dwelling fully destroyed 62m x 30m dwelling fully destroyed	30000 70000
161	Other Fire	Veitongo	07/11/2015 2230hrs	Sione Palelei (m) 37yrs	Undetermined	Wreck vehicle	200
162	False Alarm	Kolofo'ou (Taumoepeau Building)	10/11/2015 0723Hrs	Paula Taumoepeau (m) 56yrs	-	-	50
163	House Fire	Hoi	08/11/2015 1413Hrs	Fetongi Katoa (m) 40yrs	Undetermined	1 chair	30
164	Other Fire	Pea	08/11/2015 2352Hrs	Lolita Kupu (f) 54yrs	Setting fire to rubbish	Rubbish 1m square	50
165	Bush Fire	Pangai, Hp	10/11/2015 1459Hrs	Petuliki Fa/Sione Kalama	Setting fire to rubbish	Bush fire, coconut trees	150
166	Bush Fire	Mata ki 'Eua	12/11/2015 1347Hrs	Mele Kamoto (f) 36yrs	Undetermined	Bush fire 1 acre	100
167	House Fire	Havelu	12/11/2015 1419Hrs	Paula Mohetau (m) 33yrs/Vaioleti Kaho (f) 28yrs	Undetermined	14m x 6m dwelling fully destroyed	60800
168	Other Fire	Nakolo	12/11/2015 1926Hrs	Vaikeli Kalapa (f) 64yrs/Ane Kalapa (f) 28yrs	Accident	L 1326 fully destroyed	30000
169	Bush Fire	Veitongo	14/11/2015 1131Hrs	Nolini 'Aholelei (f) 39yrs	Setting fire	Bush fire 2 acres	150
170	Bush Fire	Ha'ateiho	14/11/2015 1049Hrs	TCC	Undetermined	Bush fire 1 acre	50
171	House Fire	Havelu	16/11/2015 1308Hrs	Vilivaka Paea (m) 54yrs	Mosquito coil	16m x 14m dwelling partly destroyed	500
172	Bush Fire	Folaha	16/11/2015 1650Hrs	G.O.T	Undetermined	Bush fire 4 acres	80
173	Bush Fire	Nualei	17/11/2015 1252Hrs	Vailea Kavaliku (m) 51yrs	Undetermined	Bush fire 3 acres	200
174	Bush Fire	Liahona	17/11/2015 1419Hrs	Fuesia Tupou/Faha'ivalu Niupalavu (m) 42yrs	Setting fire	Bush fire 2 acres, pata tree	100
175	Bush Fire	Houma	18/11/2015 1155Hrs	Lord Tuita/Viliami Tu'ipulotu (m) 62yrs	Undetermined	Bush fire 4 acres	150
176	Bush Fire	Pelehake	19/11/2015 1834Hrs	Maile Manufekai (m) 52yrs/Maikolo Taufa (m) 39yrs	Setting fire	Bush fire 1acre	50
177	House Fire	Longolongo	20/11/2015 1502Hrs	Veikune (m) 71yrs	Undetermined	25m x 15.9m dwelling destroyed 90%	200000
178	Other Fire	Kolonga	20/11/2015 1630Hrs	Tongiaki Vea (f) 55yrs/Toakase Ta'ufu'u (f) 49yrs	Setting fire	1 coconut tree, 1 piu tree	100

179	Other Fire	Touliki	20/11/2015 1812Hrs	Lord Nuku	Undetermined	Rubbish fire	50
180	House Fire	Longolongo	22/11/2015 0522Hrs	Fotu Havea (m) 72yrs/Sio Faleola (m) 62yrs	Undetermined	6.25m x 4.47m dwelling partly destroyed	200
181	Special Service	Pelehake (Tuku'aho Rd)	20/11/2015 2256Hrs	G.O.T	Undetermined	Mango tree	80
182	Other Fire	Hihifo, Hp	23/11/2015 0932Hrs	'Alakeita Tu'ivailala (f) 65yrs	Setting fire to rubbish	Rubbish fire	50
183	Bush Fire	Matahau	26/11/2015 1405Hrs	Tu'ifua Tatafu (m) 57yrs./Falakiko Tatau (m) 28yrs	Setting fire	Bush fire 2 acres	80
184	Other Fire	Havelu	28/11/2015 0304Hrs	Pakiaola Latu (f) 44yrs	Undetermined	Vehicle C15089 fully destroyed	14000
185	Bush Fire	Pelehake	28/11/2015 1844Hrs	Tonga Mafi (m) 65yrs	Undetermined	Bush fire 1 acre	150
186	House Fire	Tofoa	28/11/2015 1220Hrs	Siosaia Pekipaki (m) 53yrs/Kalesita Pekipaki (f) 50yrs	Undetermined	7m x 5m, 16m x 14m dwelling fully destroyed	50000
187	Other Fire	Longoteme	28/11/2015 2318Hrs	Poaki Kioa (m) 45yrs/Tevisa Langilangi (m) 34yrs	Undetermined	Vehicle L12914	3000
188	House Fire	'Ohonua, 'Eua	30/11/2015 1432Hrs	Fatafehi 'Alipate (f) 47yrs	Fire place	6m x 4.3m kitchen fully destroyed	500
189	Bush Fire	Masilamea	01/12/2015 1205Hrs	Ta'u Fetu'u (m) 41yrs	Setting fire	Bush fire 1 acre	80
190	Bush Fire	Holonga	01/12/2015 1327Hrs	G.O.T/GPS Holonga	Setting fire	Bush fire ½ acre	50
191	Bush Fire	Nualei	01/12/2015 2024Hrs	Brian Misinale (m) 31yrs	Setting fire	-	50
192	Bush Fire	Fatumu	03/12/2015 1924Hrs	Tokotaha Mafi (m) 68yrs	Undetermined	-	50
193	False Alarm	Nuku'alofa	04/12/2015 1424Hrs	-	Undetermined	-	100
194	Bush Fire	Ha'alalo	05/12/2015 1304Hrs	Uikelotu Tauei (f) 55yrs/Kisione Folau (m) 69yrs	Setting fire	Bush fire 2 acres, 30 coconut trees	150
195	Bush Fire	Lomaiviti	07/12/2015 1003Hrs	Tevisa Tu'ipulotu (m) 65yrs	Setting fire	Bush fire 2 acres	100
196	House Fire	Tatakamotonga	07/12/2015 2326Hrs	'Amelia Lao (f) 89yrs	Undetermined	14.75m x 12.95m dwelling fully destroyed	80000
197	Special Service	Nukunuku	09/12/2015 0910Hrs	-	Undetermined	Tala'asi Tu'ipulotu suffering from illness	20
198	Bush Fire	Vaini	09/15/2015 1129Hrs	'Inoke Pole'o (m) 64yrs	Setting fire to rubbish	Bush fire, 1 coconut tree	100
199	Other Fire	Kala'au	13/12/2015 0655Hrs	Tonga Power Ltd	Undetermined	Power pole partly destroyed	150
200	Bush Fire	Fasi mo e Afi	14/12/2015 1800Hrs	Real Estate Tonga	Undetermined	Bush fire 13m x 11m	50
201	Bush Fire	'Atenisi	14/12/2015 1906Hrs	Futa Helu	Kid playing with match	Bush fire 21m x 12m, 2 pine trees	120
202	Bush Fire	Kolonga	15/12/2015 1928Hrs	Semisi Fungalei (m) 44yrs	Undetermined	Bush fire 2 acres, 4 coconut trees	100
203	House Fire	Lapaha	16/12/2015 2102Hrs	Kaluseti 'Ofahulu (m) 39yrs	Undetermined	4.45m x 3.20m dwelling fully destroyed	2000
204	House Fire	Popua	17/12/2015 0034Hrs	Sione Folau(m) 71yrs/Mele Manuofetoa (f) 51yrs	Undetermined	4.5m x 3.5m kitchen fully destroyed	150
205	Other Fire	Koulo, Hp	17/12/2015 1438Hrs	'Aisea Lie (m) 65yrs	Setting fire	Ovava tree	100

206	Bush Fire	Tokomololo	19/12/2015 1320Hrs	Paula Tautua'a	Setting fire	Bush fire 1 acre, 7 coconut trees, 6 hopa	200
207	Bush Fire	Nualei	21/12/2015 2134Hrs	-	Undetermined	Bush fire 1 acre	100
208	Bush Fire	Kolonga	22/12/2015 1250Hrs	Kioa Falekaono (m) 66yrs	Undetermined	Bush fire 8 acres, cassava	250
209	Bush Fire	Houma	22/12/2015 1840Hrs	Faha'ivalu Finau (m) 75yrs/TCC	Setting fire	Bush fire ½ acre	50
210	Other Fire	Kolofo'ou	24/12/2015 2035Hrs	Lei Saafi	Undetermined	Rubbish	50
211	House Fire	Sailoame, Vv	25/12/2015 0315Hrs	Ngongo Saia (m) 52yrs/Wang Sony Yun (m) 35yrs	Undetermined	36m x 11m store 9.8m x 6.5m restaurant 15.2m x 9.5m rent All fully destroyed	600000
212	Bush Fire	Niutoua	26/12/2015 1632Hrs	Tongata Tonga (m) 94yrs/Isikeli Oko (m) 52yrs	Undetermined	Bush fire ½ acre	50
213	Bush Fire	Ha'ateiho	26/12/2015 2327Hrs	Viliami Kaho (m) 69yrs	Undetermined	Bush fire 30 pole	100
214	Bush Fire	Niutoua	27/12/2015 1943Hrs	Lord Nuku/Havea Tu'anuku (m) 49yrs	Undetermined	Bush fire 8 acres	500
215	Bush Fire	Mata'aho, 'Eua	27/12/2015 2307Hrs	Palu Taulava/Tina Taulava (f) 76yrs	Undetermined	Bush fire 1.5acre	200
216	House Fire	Vaini	28/12/2015 0713Hrs	Mapa Ha'ano Taloa (m) 80yrs/Fehi Taloa (f) 80yrs	Undetermined	8" x 6" dwelling fully destroyed	500
217	Bush Fire	Lapaha	28/12/2015 1202Hrs	Lord Kalaniuvalu (m) 34yrs	Setting fire	Bush fire 4 acres	150
218	Bush Fire	Masilamea	28/12/2015 1408Hrs	Siaosi Kolomatangi (m) 58yrs/Lu'isa Kauvaka (f) 50yrs	Undetermined	Bush fire 1 acre coconut trees banana	100
219	Bush Fire	Pelehake	28/12/2015 1552Hrs	Lau'ia Fuimaono (m) 60yrs/Aleki Moeakiola (m) 37yrs	Undetermined	Bush fire 2 acres	100
220	Bush Fire	Sia'atoutai	28/12/2015 1605Hrs	Ma'afu Pohiva (m) 75yrs	Undetermined	Bush fire 2 acres, hopa, coconut trees, banana, cassava	550
221	Bush Fire	Ha'atu'a, 'Eua	28/12/2015 1629Hrs	Talia 'Asa (m) 70yrs	Setting fire	Bush fire 2 acres, coconut trees, banana, vanilla	1000
222	Bush Fire	Vaotu'u	28/12/2015 1704Hrs	Tupou Pola'ulu (m) 78yrs	Setting fire	Hush fire 1 acre, pine trees, coconut trees	5000
223	Bush Fire	Tofoa	28/12/2015 1715Hrs	Afu'alo Matoto/Toni Ve'a (m) 37yrs	Undetermined	Bush fire 30 pole	70
224	Bush Fire	Lakepa	28/12/2015 1747Hrs	Lord Tu'ivakano/Tevita Snaft (m) 48yrs	Undetermined	Bush fire ½ acre	80
225	Bush Fire	Hala'oVave	29/12/2015 1117Hrs	'Elina Malolo (f) 58yrs	Setting fire to rubbish	Bush fire ½ acre	100
226	Bush Fire	Vaotu'u	29/12/2015 1206Hrs	Matavai Fonua (m) 54yrs	Setting fire	Bush fire 1 acre	80
227	Bush Fire	Ha'asini	29/12/2015 1216Hrs	Lolie Palu (m) 75yrs	Setting fire	Bush fire ½ acre	50
228	Bush Fire	Hala'oVave	29/12/2015 1505Hrs	Tevita Nau (m) 54yrs	Setting fire	Bush fire 10 pole	100
229	Other Fire	Popua	29/12/2015 1510Hrs	Tafitonga Fonua (m) 48yrs	Undetermined	Rubbish fire	100
230	Bush Fire	Sia'atoutai	29/12/2015 1720Hrs	Sioeli Ve'a (m) 47yrs	Undetermined	Bush fire ½ acre	150
231	Bush Fire	Pelehake	29/12/2015	Folau Siale (m) 44yrs	Undetermined	Bush fire ½	50

			2030Hrs			acre	
232	Bush Fire	Fua'amotu	30/12/2015 1225Hrs	Mafile'o Vakasiuola (m) 60yrs	Undetermined	Bush fire 1 acre	150
233	Bush Fire	Tu'atakilangi	30/12/2015 1444Hrs	-	Undetermined	Bush fire 30 pole, pata trees	100
234	Bush Fire	Lapaha	31/12/2015 1207Hrs	Sosefo Ngungutau (m) 58yrs	Undetermined	Bush fire 8 acres, pad lock	1100
235	Other Fire	Hu'atolitoli	31/12/2015 1253Hrs	Hakelotu Vailea/Seluini Tupou (m) 31yrs	Accident	Vehicle C8084 partly destroyed	700
236	Other Fire	Kahoua	31/12/2015 1538Hrs	Royco Ltd/Community Police	Undetermined	Rubbish fire 15m x 9m	60
237	House Fire	Talau	01/01/2016\ 0400Hrs	'Isikeli Fakatulolo (m) 54yrs	Cooking	12.2m x 11.6m dwelling fully destroyed	60000
238	Special Services	'Anana	01/01/2016 0634Hrs	Sione Mataele (m)/'Etika Mataele (m) 46yrs	Over speeding Drunken driving	1 vehicle	9000
239	Other Fire	Touliki	01/01/2016 1336Hrs	'Alipate Filimoehala (m) 46yrs	Undetermined	B474 fully destroyed	5000
240	Bush Fire	Tokomololo	01/01/2016 1643Hrs	Tauelangi Kiteau (m) 32yrs/Siliva Lavulo (m) 67yrs	Undetermined	Bush fire to 24 acres, fences, cassava, hopa, pata, coconut trees	2000
241	False Alarm	Nuku'alofa	01/01/2016 1912Hrs	Paula Taumoepeau (m) 55yrs	Cooking	Alarm system	100
242	Special Services	Haveluloto	02/01/2016 1635Hrs	Government of Tonga	Strong wind	1 coconut tree and electric wire	2000
243	Other Fire	Veitongo	02/01/2016 959Hrs	Tonga Power Limited	Undetermined	1 power pole	100
244	Other Fire	Pili	02/01/2016 2001Hrs	Susana Vaea (f) 50yrs/'Uiha and Son Limited	Undetermined	Broken vehicles 1 power pole	500
245	Other Fire	Hofoa	02/01/2016 2156Hrs	'Aholotu Heitonga (m) 80yrs	Fire place	1 ifi tree	150
246	Special services	Hofoa	02/01/2016 2222Hrs	'Aholotu Hetonga (m) 80yrs	Strong wind	1 ifi tree	50
247	House Fire	Neiafu	03/01/2016 0346Hrs	Government of Tonga/ Paula Tatafu (m) 69yrs	Undetermined	21.8m x 14.5m dwelling fully destroyed	8000
248	House Fire	Hoi	05/01/2016 0029Hrs	Visio Kafoa (m) 54yrs/Tonga Kafoa (m) 24yrs	Undetermined	3.10m x4.25m dwelling fully destroyed	700
249	House Fire	Sia'atoutai	05/01/2016 1923Hrs	Sia'atoutai Theological College/ Folauhola Taukafa (m) 58yrs	Undetermined	17m x 7.5m dwelling fully destroyed	80000
250	Other Fire	Pili	06/01/2016 0355Hrs	'Uiha and Sons Limited	Undetermined	Rubbish fire, broken vehicle	500
251	Other Fire	Ma'ufanga	06/01/2016 1128Hrs	Halisi Fifita (m) 49yrs	Undetermined	L9434 partly destroyed	3000
252	False Alarm	Nuku'alofa	09/01/2016 1350Hrs	Paula Taumoepeau (m) 55yrs	Undetermined	Alarm system	100
253	Bush Fire	Nualei	09/01/2016 2006Hrs	Tevita Veatupu (m) 67yrs	Undetermined	Bush fire to 4 acres, 10 banana, 20 coconut trees	500
254	Other Fire	Houma	10/01/2016 1743Hrs	Pasalona Hokafonu (m) 40yrs	Undetermined	1 toa tree	50
255	Bush Fire	Ha'ateiho	11/01/2016 1728Hrs	Sailosi Tuilape (m) 52 yrs	Undetermined	Bush fire to 2 acres	100
256	Bush Fire	'Ahau	12/01/2016 1811Hrs	Nauvai Talamai (m) 66yrs/ Tupou Talamai (m) 30yrs	Undetermined	Bush fire to 2 acres	90

257	Bush Fire	Puke	13/01/2016 1621Hrs	Lesieli Vete (m) 65yrs	Setting fire	Bush fire to 5m x 3m	100
258	Other Fire	Lavengamalie	14/01/2016 1447Hrs	Lavengamalie Christian College	Undetermined	Rubbish fire to 12m x 8m	50
259	Bush Fire	Ha'atafu	15/01/2016 1420Hrs	Sunia 'Ungo'unga (m) 62yrs/ Sikoti 'Ungo'unga (m) 32yrs	Undetermined	Bush fire to 3 acres, coconut trees, hiapo, hopa	400
260	Bush Fire	Vaini	15/01/2016 1915Hrs	Lord Ma'afu (m) 59yrs/ Tevita 'Unga Ma'afu (m) 33yrs	undetermined	Bush fire to 30poles	80
261	Bush Fire	Kala'au	16/01/2016 1500Hrs	Siaosi Moa (m) 46yrs	Setting fire	Bush fire to 1 acre, pata, lou'akau	300
262	Bush Fire	'Alaki	17/01/2016 1329Hrs	'Ana Matekitonga (f) 44yrs	Undetermined	Bush fire to 4 acres, coconuts tree, mango, banana	100
263	House Fire	Fasi moe Afi	17/01/2016 1622Hrs	'Anitelu Kaulave (m) 80yrs/ Saimone Kaulave(m) 50yrs	Kid playing with match	36m x 2m dwelling partly destroyed	70
264	Other Fire	Haveluloto	17/01/2016 1904Hrs	Tangi Palaki (m) 77yrs	Setting fire to rubbish pile	1 Vavae tree	50
265	Bush Fire	Haveluliku	18/01/2016 1650Hrs	Moeaki Afungia (m) 79yrs	Undetermined	Bush fire to 1 acre	100
266	Bush Fire	Vaini	19/01/2016 1348Hrs	Tupou Tatofi (m) 79yrs/ Teimoni Tatofi (m) 49yrs	Setting fire	Bush fire to 100 m2, pata, coconut trees	1200
267	Bush Fire	Hofoa	19/01/2016 1704Hrs	'Akapei Siale (m) 42yrs	Setting fire	Bush fire to ½ acre	50
268	Other Fire	Mataika	20/01/2016 1826Hrs	Lin Ruijia(f) 30yrs	Undetermined	Rubbish fire	50
269	Other Fire	Puke	20/01/2016 1918Hrs	Tisi Vete (m) 48yrs/ Luna 'Eva Construction	Undetermined	Rubbish fire, 1 ifi tree	50
270	Other Fire	Puke	21/01/2016 0900Hrs	Tisi Vete (m) 48yrs/ Luna 'Eva Construction	Undetermined	1 ifi tree partly destroyed	50
271	House Fire	Nuku'alofa	21/01/2016 0824Hrs	Sue Gardiner Kingdom (f) 53yrs	Undetermined	40m x 36m commercial building	4000
272	Other Fire	Longolongo	22/01/2016 2215Hrs	Tonga Power Limited	Sorting of wire	Electrical wire	50
273	False Alarm	Kolofo'ou	23/01/2016 1355Hrs	Tonga Power Limited	Undetermined	Alarm system	50
274	Other Fire	Sopu	23/01/2016 1935Hrs	Mele Tupou (f) 79yrs/ Sekope Feki (m) 60yrs	Setting fire to rubbish pile	2 lou'akau, 1 ifi tree	250
275	Bush Fire	Tu'atakilangi	25/01/2016 1539Hrs	Tevita Vaka'uta (m) 45yrs	Setting fire	Bush fire to 30m x 16m	50
276	Other Fire	Lapaha	25/01/2016 2040Hrs	Angilau Palanita (m) 28yrs	Sort of wire	B609 partly destroyed	50
277	Bush Fire	Matahau	26/01/2016 1345Hrs	Silivenusi Hamala (m) 66yrs	Setting fire	Bush fire to 1 acre	80
278	Other Fire	Ha'ateiho	27/01/2016 1210Hrs	Lord Tu'iha'ateiho	Undetermined	Rubbish fire to 25m x 12m	80
279	Other Fire	Kolofo'ou	29/01/2016 1629Hrs	Tevita Fanaa (m) 82yrs/ Pukeloa Blake (f) 23yrs	Undetermined	Rubbish fire	60
280	Other Fire	'Utulau	31/01/2016 0025Hrs	Kisi Taulani Ika (m) 45yrs	Undetermined	C 14236 partly destroyed	3000
281	Other Fire	Ha'ateiho	31/01/2016 1003Hrs	Vaohi Fonua (f)	Undetermined	Rubbish fire to 1m x 2m	50
282	Bush Fire	Fualu	01/02/2016 1348Hrs	Paseisei Havili (m) 67yrs/ Siale Paea (m) 26yrs	Setting fire	Bush fire to 2 acres	80
283	Bush Fire	Puke	01/02/2016 1903Hrs	Saulala Moala (m) 50yrs/ Losaline Moala	Setting fire	Bush fire to 2 acres	60

				(m) 28yrs			
284	Bush Fire	Houma	02/02/2016 1454Hrs	Houma Water Committee	Setting fire	Bush fire to 1 acre	50
285	Other Fire	Tokomololo	03/02/2016 1904Hrs	Government of Tonga/ Tonga Forest	Undetermined	Rubbish fire to 5m x 6m	100
286	Bush Fire	Tokomololo	06/02/2016 1247Hrs	-	-	100.5m2, coconut trees	750
287	Bush Fire	Fahefa	06/02/2016 1414Hrs	Lord Ve'ehala	Undetermined	Bush fire to 1 acre	50
288	Bush Fire	Pelehake	06/02/2016 1540Hrs	Sione Finau (m) 62yrs	Undetermined	Bush fire	50
289	Bush Fire	Niutoua	06/02/2016 1540Hrs	Vili Funaki (m) 38yrs/ Pasā Hu'ahulu (m) 39yrs	Undetermined	Bush fire to 1 acre, 1 power pole	100
290	Bush Fire	Tofoa	06/02/2016 1841Hrs	Fotofili Namoa (m) 55yrs/ Salesi Pongi (m) 53yrs	Setting fire to rubbish pile	Bush fire to 13m x 8m	50
291	Bush Fire	Vaini	08/02/2016 1305Hrs	Mafile'o Ma'afu (f) 58yrs	Undetermined	Bush fire to 2 x 100 m2	450
292	Bush Fire	Kolomotu'a	08/02/2016 1507Hrs	Tomasi Tu'i'ile'ila (m) 71yrs/Nepote Tu'i'ile'ile (m) 64yrs	Setting fire	Bush fire, coconut trees, 1 breadfruit	150
293	Special Services	Haveluloto	13/02/2016 2359Hrs	Tupou Lauaki(m) 37yrs	Negligence drive	C 16340 partly damage	1000
294	False Alarm	Nuku'alofa	15/02/2016 0906Hrs	Robina Nakao (f) 48yrs	Undetermined		100
295	Other Fire	Angahā	18/02/2016 0050Hrs	'Alani Taumalolo	Undetermined	Electrical wire	50
296	Other Fire	Liahona	23/02/2016 1330Hrs	Tong Power Limited	Undetermined	1 power pole	50
297	Other Fire	Pangai /'Eua	23/02/2016 1945Hrs	Kaili Ma'ake (m) 68yrs	Setting fire to rubbish pile	Rubbish fire, 1 broken vehicle	50
298	House Fire	Ha'akame	24/02/2016 2313Hrs	Kine To'a (m) 32yrs	Undetermined	5.8m x 5m dwelling fully destroyed, * 1 deceased	3000
299	Bush Fire	Tu'atakilangi	25/02/2016 1304Hrs	'Afa Taulangovaka (m) 36yrs	Undetermined	Bush fire to 30 pole	50
300	Other Fire	Tu'atakilangi	26/02/2016 1041Hrs	Tevita Simiki / Michael Cokanasigar (m) 33yrs	Undetermined	Electrical wire, meter box	750
301	Bush Fire	Vaini	26/02/2016 2104Hrs	-	Undetermined	Bush fire, coconut trees	150
302	House Fire	Manuka	28/02/2016 0828Hrs	Penisimani Kaufusi (m) 85yrs	Undetermined	11m x 10.4m dwelling fully destroyed	30000
303	Bush Fire	Veitongo	01/03/2016 1834Hrs	Sa'ili Lui (m) 52yrs	Setting fire to rubbish pile	Bush fire to 1 acre	110
304	Other Fire	Ngele'ia	02/03/2016 0856Hrs	Meleane Tovi (f) 42yrs	Setting fire	Rubbish fire	70
305	Bush fire	Te'ekiu	02/03/2016 1526Hrs	Taufa Tonga (m) 48yrs	Setting fire	Bush fire to 4 acres, coconut trees	150
306	Bush Fire	Hofoa	02/03/2016 2030Hrs	Viliami Taufa (m) 68yrs/ Mosese Na'a (m) 68yrs	Setting fire	Bush fire to 5 acres, 40 paini trees, coconuts trees	1000
307	Bush Fire	Liahona	03/03/2016 2120Hrs	Church of Jesus Christ of Later Day Saint/ Liahona High School	Undetermined	Bush fire to 1 acre	150
308	Bush Fire	Tatakamotonga	04/03/2016 1816Hrs	Tevita Moimoi (m) 50yrs	Undetermined	Bush to ½ acre	50
309	Bush Fire	Tofoa	05/03/2016 1243Hrs	Viliami Kami (m) /Toni Fonokalafi (m) 61yrs	Setting fire	Bush fire to 30 pole, pata trees	100
310	Bush Fire	Matahau	07/03/2016	Sosaioa Me'afo'ou	Setting fire	Bush fire to ½	50

			1805Hrs	(m) 58yrs		acre	
311	Bush Fire	'Alaki	07/03/2016 2112Hrs	Viliani Va'enuku (m) 64yrs	Setting fire to rubbish pile	Bush fire to 2 acres	50
312	House Fire	Lapaha	08/03/2016 0530Hrs	Siope Tafa (m)/ Lilipeti Katoa (f) 56yrs	Undetermined	9.5m x 16m dwelling fully destroyed	6000
313	Other Fire	Kolofo'ou	10/03/2016 1759Hrs	Sione Tohi (m) 50yrs	Setting fire to rubbish pile	Rubbish fire	150
314	Other Fire	Fanga 'o Pilolevu	10/03/2016 0805Hrs	Kilisitina Tuamei'api (f) 44yrs/ Tu'ipulotu Tuamei'api (m) 48yrs	Accidental	L11579 fully destroyed	10000
315	Bush Fire	Puke	11/03/2016 1404Hrs	'Ieni Tu'ihalangie	Undetermined	Bush fire to 3 acres, coconut trees, kofe trees	300
316	Other Fire	Haveluloto	18/03/2016 0449Hrs	Vika Kaufusi (f) 80yrs	Electric wire spark	Electrical wire to 5m	55
317	Other Fire	Hofoa	19/03/2016 1953Hrs	Tonga Power Limited/ kololita Reddy (f) 30yrs	Electric wire spark	1000 voltage wire	50
318	House Fire	Sia'atoutai	23/03/2016 0119Hrs	Free Wesleyan Chruch/ Uilini Kuila (m) 39yrs	LPG stove	6.50m x 5.50m dwelling fully destroyed	10000
319	Other Fire	Fangaloto	27/03/2016 1658Hrs	-	Undetermined	Lou'akau, fau, electric wire	1350
320	Bush Fire	Fahefa	28/03/2016 1858Hrs	'Ofa Kaveinga Taueli (f) 73yrs	Setting fire	Bush fire to 1 acre	50
321	Bush Fire	Ma'ufanga	02/04/2016 1542Hrs	'Akuila Vea (m) 83yrs	Setting fire to rubbish pile	Bush fire, lou'akau	580
322	Bush Fire	Fangaloto	09/04/2016 2100Hrs	Government of Tonga	Undetermined	Bush fire to 1m	70
323	House Fire	Fungamisi, Vv	12/04/2016 1139Hrs	Paul Stone (m) 46Hrs	Setting fire to rubbish pile	4m x 2m storage fully destroyed	1200
324	House fire	Haveluloto	13/04/2016 0114Hrs	Paula Vi (m) 64yrs	Candle	11.20m x 7.15m dwelling fully destroyed	24500
325	Bush fire	Pea	15/04/2016 1440Hrs	Komisi Fihaki (f) 62yrs	Undetermined	Bush fire to 15m	100
326	Bush fire	Nualei	15/04/2016 1923Hrs	Sister Kanongata'a (f) 38yrs/ Viliani Falekaono (m) 58yrs	Undetermined	Bush fire to 5 acres	200
327	Bush fire	Hala 'o Vave	16/04/2016 1350Hrs	Tilema Halo (f) 73yrs/ 'Asiata Finau (m) 63yrs	Setting fire	Bush fire	50
328	House Fire	Tonga Side School	20/04/2016 0145Hrs	Government of Tonga/ Tonga Side School	Undetermined	29.1m x 9.1m school partly destroyed	66000
329	House Fire	Ma'ufanga	21/04/2016 1158Hrs	'Osova Puli'uvea (m) 59yrs	Electric sort	Fiesta Sea food restaurant partly destroyed	80
330	House Fire	Hofoa	21/04/2016 1422Hrs	Siulolo Pau'uvale (m) 50yrs/ Vaha'i Lapu'aho (m) 46yrs	Undetermined	9.8m x 8m dwelling fully destroyed	8000
331	False Alarm	Fua'amotu/Domestic Airport	20/04/2016 1857Hrs	Real Tonga Airline	Undetermined	J32	50
332	House Fire	Ma'ufanga	23/04/2016 1829Hrs	Hensan Oscar (m) 54yrs	Undetermined	6m x 3m storage fully destroyed	1000
333	Other Fire	Kolomotu'a	24/04/2016 1334Hrs	Taufa Savou (m) 29yrs/ Lisiate Saafi (m) 31yrs	Undetermined	L16855 partly destroyed	2000
334	Other Fire	Ha'ateiho	25/04/2016 1731Hrs	Lord Tu'ihaha'ateiho	Undetermined	1 toa tree	80
335	Bush Fire	Nualei	27/04/2016 1224Hrs	Luseane Mili (f) 76yrs/ 'Isikeli Lotaki (m) 47yrs	Setting fire	Bush fire to 8 acres	80
336	House Fire	Ma'ufanga	27/04/2016	Roman Catholic	Undetermined	16.5m x 7.4m	30350

			1510Hrs	Church/ Analena Ta'ai(f) 45yrs		dwelling fully destroyed	
337	Bush Fire	Fua'amotu	28/04/2016 1914Hrs	Graeme Horsky (m) 64yrs	Undetermined	Bush fire to ½ acre	280
338	Bush Fire	Tatakamotonga	28/04/2016 2024Hrs	'Inoke Funaki (m) 70yrs	Undetermined	Bush fire to 6 acres	2450
339	Bush Fire	Tufumahina	30/04/2016 1517Hrs	Sepuloni Latu (m) / Petueli (m) 52yrs	Setting fire	Bush fire to ½ acre	50
340	Bush Fire	'Atele College	30/04/2016 1611Hrs	Government of Tonga	Setting fire	Bush fire to ½ acre	50
341	Other Fire	Haveluliku	01/05/2016 0714Hrs	Sione Malohi (m) 81yrs/ Fine Tupoumalohi (m) 21yrs	Undetermined	J6297 fully destroyed	3000
342	Bush Fire	Ma'ufanga	01/05/2016 1256Hrs	-	Undetermined	Bush fire to ½ acre	50
343	Bush Fire	Tofoa	02/05/2016 1038Hrs	FWC Tofoa	Undetermined	Bush fire 1 acre	75
344	Other Fire	Fanga 'o Pilolevu	05/05/2016 1702Hrs	Na'a Lemoto (m) 75yrs	Setting fire to rubbish pile	1 broken vehicle	130
345	House Fire	Fangaloto	14/05/2016 1144Hrs	Sosaia Palometa (m) / Katalaina Fehoko (f) 36yrs	Undetermined	22m x 16m dwelling partly destroyed	2500
346	House Fire	Ma'ufanga	14/05/2016 1225Hrs	Mangisi Halafihi (m) 60yrs	Undetermined	6m x 5m dwelling fully destroyed	3000
347	House Fire	Malapo	19/05/2016 0646Hrs	Helani Latu (m) 34yrs	Undetermined	4.5m x 3.3m dwelling fully destroyed	3050
348	Bush Fire	Hofoa	21/05/2016 1541Hrs	Tonga Moala (m) 76yrs/Fine Pongi (m) 51yrs	Setting fire	Bush Fire to ½ acre	50
349	Bush Fire	Nukunuku	26/05/2016 1400Hrs	Falakika Kongaika (m)/ Soane Samisoni (m) 50yrs	Setting fire	Bush fire to 2 acres, 9 cococnut trees, fences	60
350	False Alarm	Ma'ufanga	26/05/2016 1410Hrs	Lata Folau (m) 51yrs/Filipe Nau (m) 74yrs	Undetermined	Security Alarm	50
351	Bush Fire	Fahefa	27/05/2016 1107Hrs	Moli Tui (m) 32yrs	Setting fire to rubbish pile	1 toa tree	50
352	Bush Fire	Pelehake	27/05/2016 1315Hrs	Tali Mafi (m) 37yrs	Undetermined	Bush fire to 1 acre	450
353	Bush Fire	Tofoa	05/06/2016 1542Hrs	Government of Tonga	Undetermined	Bush fire to 60m x 20m	150
354	Other fire	Nukunuku	06/06/2016 1500	Halahunu Kolopeau (m) 45yrs	Setting fire to rubbish pile	Rubbish fire	50
355	Other Fire	'Anana	07/06/2016 0150Hrs	Lord Fakafanua	Undetermined	Rubbish fire	50
356	Bush Fire	Lapaha	07/06/2016 1518Hrs	Manulevu Tatola (m) 91 yrs	Undetermined	Bush fire to 8 acres	3250
357	Bush Fire	Tofoa	07/06/2016 1528Hrs	Manu Sikuvea (m) 38yrs/Poaki Totau (f)	Undetermined	Bush fire to 1 acre	100
358	Bush Fire	Longolongo	07/06/2016 1554Hrs	Setefano Fifita (m)/ Paealata vea (m)	Undetermined	Bush fire to 30 pole	70
359	Bush Fire	Makaunga	08/06/2016 1414Hrs	Uatesoni Tu'angalu (m) 58yrs/ Teisi Tu'ineau (m) 59yrs	Setting fire to rubbish pile	Bush fire to 1 acre	450
360	Other Fire	Tofoa	19/06/2016 0952Hrs	Mele Taufatofua (m) 26yrs/Teu Samisoni (m) 26yrs	Undetermined	L14058 partly destroyed	4950
361	House Fire	Tokomololo	20/06/2016 1133Hrs	Makamaile Manakofua (m)/ Ma'asi Fakahokotau	Electricity	12.8m x 10.2m dwelling partly destroyed	250
362	House Fire	Ha'alalo	21/06/2016 1300Hrs	Lemoto 'Okati (m) 36yrs	Undetermined	5.1m x 4.9m storage partly destroyed	1100